



National
Gallery of
Victoria

NGV Touring
Exhibition

LIVES AND TIMES

A SELECTION OF WORKS ON TOUR FROM THE
VICTORIAN FOUNDATION FOR LIVING AUSTRALIAN ARTISTS

An activity sheet for children and families
to explore the exhibition

For other NGV kids programs,
visit www.ngv.vic.gov.au/ngvkids

Indemnification for this exhibition is provided by the Victorian Government



**ARTS
VICTORIA**



The Place To Be



SHIMMERING SHAPES

Rosslynd Piggott paints soft, cloud-like pictures.

It is easy to imagine you could fall into this painting and float.

The artist is often inspired by things in nature like blossoms in spring.

What shapes from nature can you find in this painting?

Rosslynd Piggott

born Australia 1958

Unfolding flower - cloud space no. 2

2005–06

oil on canvas

185.6 x 370.2 cm

National Gallery of Victoria, Melbourne

Purchased with funds from the Victorian

Foundation for Living Australian Artists, 2006

© Courtesy of the artist

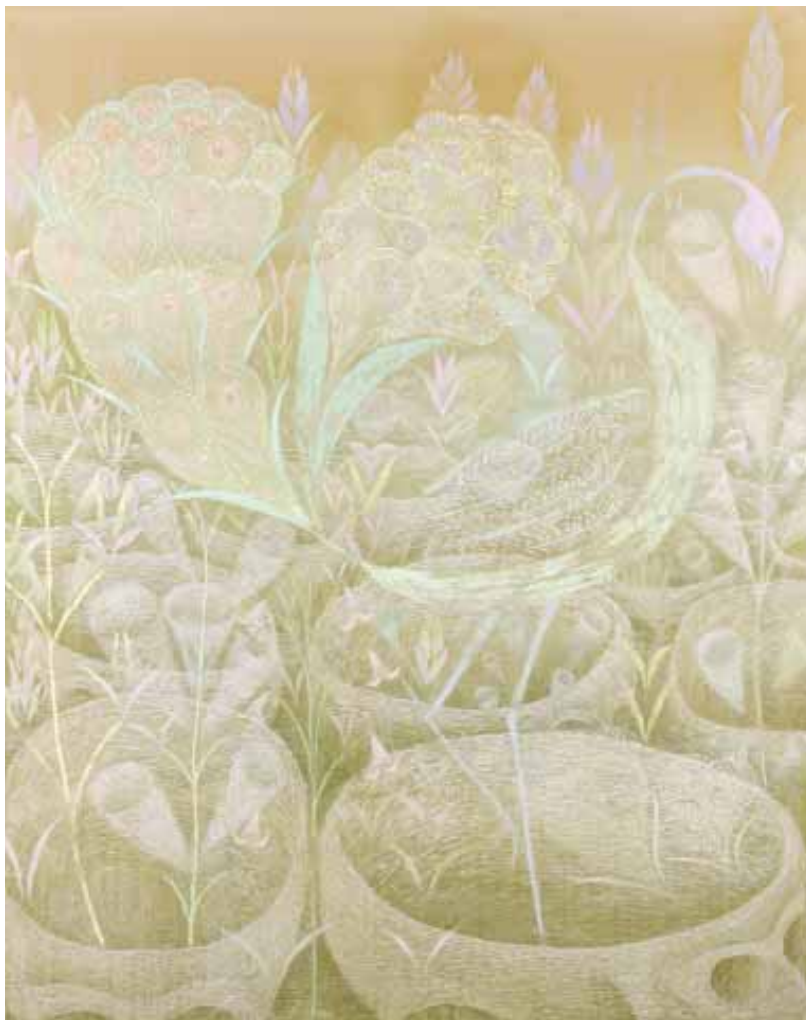
MAGICAL LANDSCAPES

Peter Graham likes to paint magical landscapes from his imagination.

We can see through the hovering shapes in this painting. It looks like a strange dream or a fairy tale.

Where could it be?

Make up names to match the flowers and the bird.



Peter Graham

born Australia 1970

When my desert blooms 2005

oil on canvas

191.4 x 152.0 cm

National Gallery of Victoria, Melbourne

Purchased with funds from the Victorian

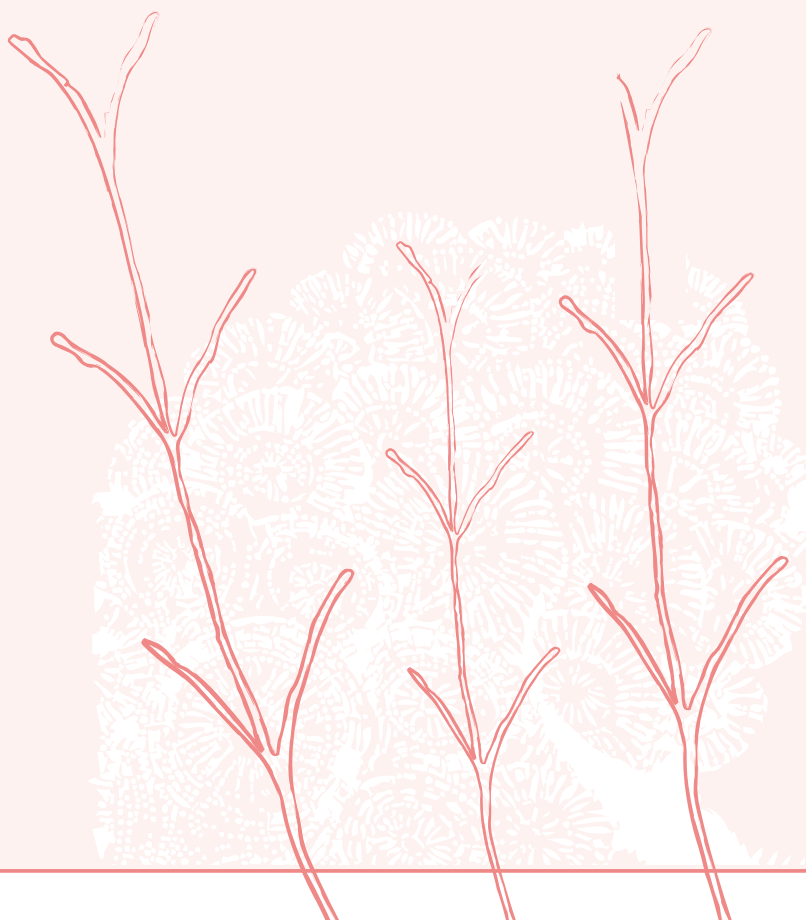
Foundation for Living Australian Artists, 2005

© Peter Graham, courtesy of Kaliman Gallery,

Sydney and Tolarno Galleries, Melbourne



**Can you draw more leaves
and flowers to make a pattern
like the artist?**





LANDLINES

Walangkura Napanangka paints pictures which show the beauty of the land and its importance to her Aboriginal culture.

This painting describes what an old woman saw as she travelled across the land.

Think about the natural world - what do the patterns in this painting remind you of?

Walangkura Napanangka

Pintupi born c. 1946

Old woman's travelling story 2004

synthetic polymer paint on canvas

182.2 x 244.0 cm

National Gallery of Victoria, Melbourne

Purchased with funds from the Victorian Foundation for Living Australian Artists, 2005

© Walangkura Napanangka, courtesy of Aboriginal Artists Agency Ltd, Sydney



A SPECIAL PLACE

Clinton Nain

Miriam Mer/Ku Ku born 1971

Erub has a bituman road now 2004

synthetic polymer paint, bitumen,
enamel paint on canvas (diptych)

152.2 x 244.0 cm (overall)

National Gallery of Victoria, Melbourne

Purchased with funds from the Victorian

Foundation for Living Australian Artists, 2005

© Courtesy of the artist and Nellie Castan

Gallery, Melbourne

Clinton Nain paints pictures which help people to discover more about his family history and Aboriginal culture.

In this painting we can see a place which is very special to him - a tropical island called Erub where his mother was born.

He has painted the place from two viewpoints – looking down and looking straight ahead.

Look in the painting. Can you find things that are from the natural environment and things that are man-made?

Think of a place which is very special to you.

MANY PLACES ONE PAINTING



Tim Johnson is interested in travelling to find out about different cultures and their beliefs. He invited three other artists from Tibet, Vietnam and Australia to paint this picture with him.

Imagine you are a traveller discovering new things. Can you find?

A green Buddha

A wheel

A sword

A being or god with three heads and six arms

A deer

Aboriginal men painting

The Earth

A Vietnamese boat

A Japanese girl wearing fashionable shoes

A giant albatross with outstretched wings

The Dalai Lama

An angel

A character from a Nintendo video game

A manga drawing of a small girl using a laptop computer

Some UFOs (unidentified flying objects)

A cloud with rainbows

A pony

Tim Johnson

born Australia 1947

Imitating art 2005

synthetic polymer and metallic paint
on canvas

183.2 x 592.3 cm (overall)

National Gallery of Victoria, Melbourne

Purchased with funds from the

Victorian Foundation for Living

Australian Artists, 2005

© Courtesy of the artist

SHAPES IN SHADOWS

Bronwyn Oliver looks at nature for her ideas. She joins copper wire to make detailed sculptures.

There are two parts to this work. One is the metal sculpture. What is the other part?

These lines copy the outline of one side of the sculpture. Make an interesting pattern by drawing more of these lines - perhaps you can draw them upside down or horizontally.



Cover:

Bronwyn Oliver

Australia 1959–2006

Crazed (2004)

copper

205.2 x 21.4 x 18.6 cm

National Gallery of Victoria, Melbourne

Purchased with funds from the Victorian Foundation for Living Australian Artists, 2005

© Estate of Bronwyn Oliver, courtesy of Roslyn Oxley9 Gallery, Sydney