

DID YOU NOTICE ?

- The bold colours in the paintings.
- The different brush marks in the paintings
- Any children in the artworks
- The piers and roads that disappear into the distance



- Pictures that are printed
- Pictures that show a silhouette

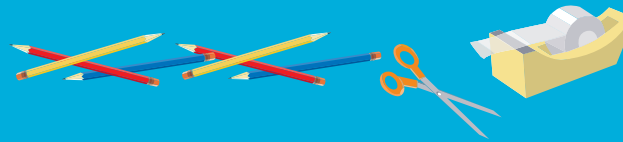


Edvard Munch Two women on the shore *To kvinner ved stranden* 1898 (detail) . Hand-coloured colour woodcut, 45.5 x 51.3 cm. Munch-museet, Oslo. © Munch-Ellingsen Group/Bono 2004

MAKING ART INSPIRED BY MUNCH

At home

- Look through magazines and find people that show different emotions. Cut and paste to make a collage picture.
- Sit in front of a mirror and draw a portrait of yourself.
- Make a Munch mask. Cut a piece of card in the shape of a face, decorate it to make a face so that shows an emotion
- Find out how to draw a bridge or road so that it disappears into the distance
- Draw and cut out a silhouette of a person or place. Paste it onto another piece of paper and make a picture.



Prepared by Dianne Hilyear, Education and Programs NGV



Top left: Edvard Munch Street scene from Åsgårdstrand *Gateparti i Åsgårdstrand* 1902 (detail) . Oil on canvas, 74.6 x 89.2 cm. Bergen Kunstmuseum, Bergen Rasmus Meyer Collection

Cover: Edvard Munch Four girls in Åsgårdstrand *Fire piker i Åsgårdstrand* 1903 (detail) . Oil on canvas, 87.0 x 111.0 cm. Munch-museet, Oslo. © Munch-Ellingsen Group/Bono 2004

NGV KIDS

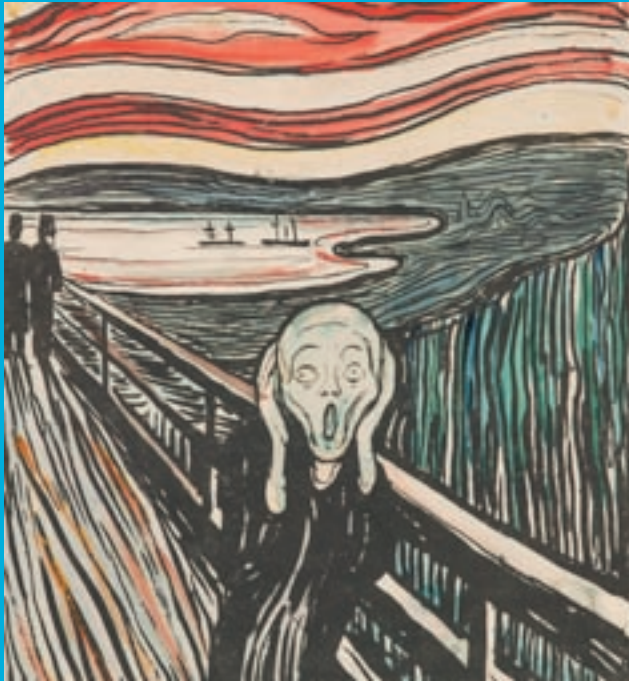


TALK ABOUT MUNCH

A guide for families in
Edvard Munch: The Frieze of Life

EMOTIONS

Edvard Munch made art about people and their feelings. Some people say his work is emotionally charged.



Can you find art works that match these emotions?

Happy Frightened
Lonely Thoughtful Angry
Surprised Jealous

Can you think of any other emotions that match these artworks?

PORTRAITS

A portrait is a picture of a person. *Edvard Munch* painted portraits of people who would sit for him. Portraits show what a person looks like and often there are clues about what the person would be like if we met them.



Imagine you met *Consul Christen Sandberg*. What do you think he would be like?

Proud Friendly
Gentle Powerful
Poor Rich
Confident

Describe some other people in the portraits

LANDSCAPES

A landscape is a picture of the land. *Edvard Munch* painted the landscape near his home in Norway.



Find a landscape that is

Empty Colourful Dark
Noisy
Cold Warm Quiet

Which place in the artworks would you like to visit?