

N G V

24.5 — MELBOURNE WINTER — 13.10
MASTERPIECES

**TERRACOTTA
WARRIORS &
CAI GUO-QIANG**

HISTORY CHALLENGE | LEVELS 7-8

BEFORE YOUR VISIT





CHRONOLOGY: CONTINUITY AND CHANGE

DID YOU KNOW?
Qin Shihuang used highly organised workforces, which included prisoners and slaves, to complete his great projects. It is estimated that 700,000 workers constructed the emperor's tomb complex.

Investigate the following time periods in China. Plot them on a timeline and include one or two significant points about each period:

- Xia dynasty
- Shang dynasty
- Zhou dynasty
- Spring and Autumn period
- Warring States period
- Qin dynasty
- Han dynasty

CHINA'S FIRST EMPEROR: HERO OR VILLAIN?

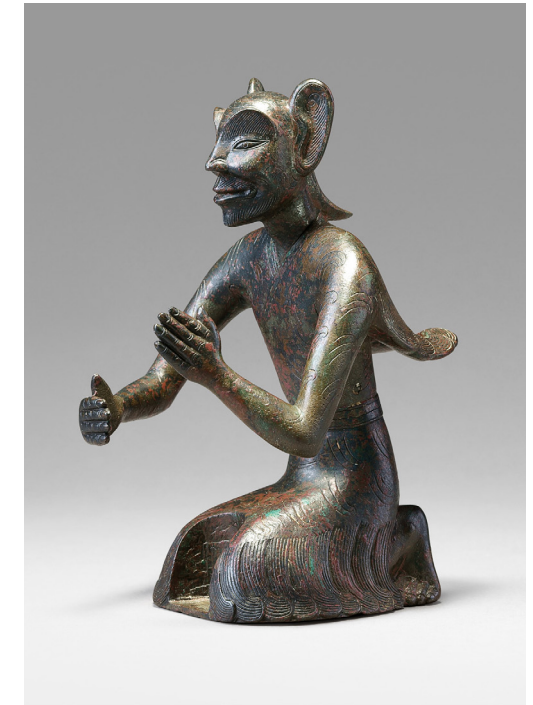
Qin Shihuang is known as the first emperor of China. He was a powerful ruler who made dramatic changes and advancements in his lifetime. He has also been criticised for being a cruel and brutal ruler. Research the achievements of Qin Shihuang. Draw up a table of his positive achievements. What other aspects of his rule may have been less popular?

ANCIENT CHINA: INVENTIONS AND INNOVATIONS

DID YOU KNOW?
The ancient Chinese were experts at using moulds to make objects such as coins, weights, measures, bells and weapons.

Many important discoveries were made in ancient China. In particular, the ancient Chinese developed sophisticated ways to use the materials they had available to them. Find out more about the impact and use of these materials in ancient China and report back to your class:

- Porcelain
- Silk
- Bronze
- Gold
- Gunpowder
- Jade



**TERRACOTTA WARRIORS:
AN ARMY FOR THE AFTERLIFE**

DID YOU KNOW?
Not one of the terracotta warriors was found completely intact. Some were missing limbs and others had been broken to pieces. Each figure has been painstakingly reconstructed.

Investigate the discovery of the terracotta army in Xian province. Write a newspaper article or present a live report to your class that shares the news of this remarkable discovery and its significance.

**BELIEFS, VALUES AND PRACTICES:
ANIMALS**

Animals (both real and imaginary) often have a symbolic meaning in Chinese art. Find out the significance or meaning of these animals in ancient China:

- Dragon
- Phoenix
- Tiger
- Cicada

**BELIEFS, VALUES AND PRACTICES:
THE AFTERLIFE**

DID YOU KNOW?
It was believed that spirit figures such as the one above could help the deceased in their journey to the afterlife. This winged figure may have held a candle to illuminate the journey.

The ancient Chinese believed in the afterlife. Research ancient Chinese funerary customs and how they changed through the dynasties. Outline some of the key differences between Shang, Zhou, Qin and Han tombs.

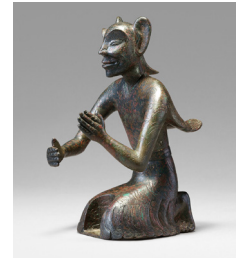
LIST OF WORKS



Kneeling archer
跪射俑
Qin Dynasty 221–207 BCE
earthenware
120.0 cm
Emperor Qin Shihuang's
Mausoleum Site Museum, Xi'an
(002812)



Sword with inlaid hilt
金柄铁剑
Spring and Autumn Period
771–475 BCE
iron, gold, turquoise
37.2 (length) cm
Baoji City Archaeological Team,
Baoji (BYM2:1)



*Winged spirit, escort of souls
of the dead*
铜羽人
Eastern Han Dynasty 25–220 CE
bronze
15.3 cm
Xi'an Museum, Xi'an (G82)



*Door ring holder in the form of a
mythological beast, Pushou*
四神兽面纹玉铺首
Han Dynasty 207 BCE–220 CE
jade
35.6 x 34.2 x 14.7 cm
Maoling Museum, Xingping
(0640)



*Bell of Duke Wu of Qin, Qin
gong bo*
秦公钟 (带挂钩)
Eastern Zhou Dynasty, Spring
and Autumn Period 770–476 BCE
bronze
64.2 x 26.2 x 22.4 cm
Baoji Bronze Museum, Baoji
(02756/IA5.5)

STATE GOVERNMENT PARTNER

PRINCIPAL PARTNER

MAJOR PARTNERS



LEARNING PARTNER



PARTNER



ORGANISING INSTITUTIONS



WITH THE ASSISTANCE OF



NGV SCHOOLS PROGRAM PARTNERS



OFFICIAL SUPPLIER



SUPPORTERS

This exhibition is organised by the National Gallery of Victoria, Melbourne, in partnership with Shaanxi Provincial Cultural Relics Bureau (陕西省文物局), Shaanxi History Museum (陕西历史博物馆), Shaanxi Cultural Heritage Promotion Center (陕西省文物交流中心), and Emperor Qin Shihuang's Mausoleum Site Museum of the People's Republic of China (秦始皇帝陵博物院).

NGV LEARNING SUPPORTERS

The NGV warmly thanks Krystyna Campbell-Pretty and the Campbell-Pretty Family for their support of the NGV Schools Support Program. The NGV gratefully acknowledges the Crown Resorts and Packer Family foundations for their support of NGV Kids exhibitions and learning programs.