

Incoming loans for *Masterpieces from the Hermitage: The Legacy of Catherine the Great*

Section 1

Fine Art – Paintings, Sculpture, Prints and Drawings

Bernardo BELLOTTO

Italian 1722–80

View of the Zwinger in Dresden 1752

oil on canvas

131.0 x 233.0 cm

The State Hermitage Museum, St Petersburg (Inv. no. ГЭ-205)

Prov.: Acquired from the collection of Count Heinrich von Brühl, Dresden, 1769



Bernardo BELLOTTO

Italian 1722–80

View of Pirna by the Sonnenstein Castle (1750s)

oil on canvas

136.0 x 237.0 cm

The State Hermitage Museum, St Petersburg (Inv. no. ГЭ-209)

Prov.: Acquired from the collection of Count Heinrich von Brühl, Dresden, 1769



Ferdinand BOL

Dutch 1616–80

Allegorical family portrait (Bacchus and Ariadne) 1664

oil on canvas

164.5 x 182.5 cm

The State Hermitage Museum, St Petersburg (Inv. no. ГЭ-760)

Prov.: Acquired 1763–74



Hans BOL

Dutch 1534–93

Allegory of spring 1579

pen and brown ink, brown wash

20.5 x 30.4 cm (sheet)

The State Hermitage Museum, St Petersburg (Inv. no. OP-354)

Prov.: Acquired from the collection of Count Cobenzl, Brussels, 1768



Paris BORDONE

Italian 1500–71

Portrait of a lady with a boy (mid 1530s)

oil on canvas

97.0 x 77.0 cm

The State Hermitage Museum, St Petersburg (Inv. no. ГЭ-70)

Prov.: Acquired 1774–85



François BOUCHER

French 1703–70

Study of a female nude 1740

red, black and white chalk on brown paper

26.2 x 34.6 cm (sheet)

The State Hermitage Museum, St Petersburg (Inv. no. OP-382)

Prov.: Acquired from the collection of Count Cobenzl, Brussels, 1768



François BOUCHER

French 1703–70

Landscape with a pond 1746

oil on canvas

51.0 x 65.0 cm

The State Hermitage Museum, St Petersburg (Inv. no. ГЭ-1137)

Prov.: Acquired from the collection of Baron Louis-Antoine Crozat de Thiers, Paris, 1772



Sébastien BOURDON

French 1616–71

The death of Dido 1637–40

oil on canvas

158.5 x 136.5 cm

The State Hermitage Museum, St Petersburg (Inv. no. ГЭ-1247)

Prov.: Acquired from the collection of Baron Louis-Antoine Crozat de Thiers, Paris, 1772



Paul BRIL

Flemish (c. 1554)–1626

Sea harbour 1610–15

oil on canvas

100.0 x 137.0 cm

The State Hermitage Museum, St Petersburg (Inv. no. ГЭ-2593)

Prov.: Acquired before 1774



Francesco CAIRO

Italian 1607–65

Portrait of a poet (17th century)

oil on canvas

60.5 x 50.0 cm

The State Hermitage Museum, St Petersburg (Inv. no. ГЭ-38)

Prov.: Acquired from the collection of the Comte de Baudouin, Paris, 1781



Jacques CALLOT

French 1592–1635

The parterre at Nancy (1620s)

Black and red chalk, grey wash

26.0 x 39.0 cm (sheet)

The State Hermitage Museum, St Petersburg (Inv. no. OP-1526)

Prov.: Acquired before 1797



Charles CAMERON

English 1745–1812

Design for the interior finishes of the Lyons Drawing Room in the Catherine Palace at Tsarskoe Selo (early 1780s)

pen and ink, watercolour

40.8 x 60.3 cm (sheet)

The State Hermitage Museum, St Petersburg (Inv. no. OP-10975)

Prov.: Acquired from Charles Cameron's descendants in London as part of Cameron's archives, 1822



Charles CAMERON

English 1745–1812

Section of the staircase in the Agate Pavilion at Tsarskoe Selo (early 1780s)

pen and ink, watercolour

64.0 x 44.5 cm (sheet)

The State Hermitage Museum, St Petersburg (Inv. no.OP-10990)

Prov.: Acquired from Charles Cameron's descendants in London as part of Cameron's archives, 1822



Charles CAMERON

English 1745–1812

The Cameron Baths. Section of the Hanging Garden and the Cold Bath Pavilion (early 1780s)

pen and ink, watercolour

58.2 x 94.7 cm (sheet)

The State Hermitage Museum, St Petersburg (Inv. no. OR-11047)

Prov.: Acquired from Charles Cameron's descendants in London as part of Cameron's archives, 1822



Charles CAMERON

English 1745–1812

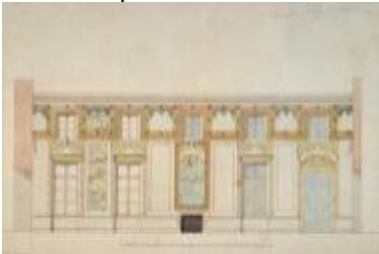
Design for the wall finish in the Chinese Room in the Palace at Tsarskoe Selo (early 1780s)

pen and ink, watercolour

43.5 x 70.6 cm (sheet)

The State Hermitage Museum, St Petersburg (Inv. no. OR-11029)

Prov.: Acquired from Charles Cameron's descendants in London, as part of Cameron's archives, 1822



Domenico CAMPAGNOLA

Italian 1500–64

Cupid with a violin (c. 1517)

pen and brown ink

14.2 x 18.0 cm (sheet)

The State Hermitage Museum, St Petersburg (Inv. no. OP-8207)

Prov.: Acquired from the collection of Count von Bruhl, Dresden, 1769



Giulio CAMPI
Italian (c. 1508)–1573
Portrait of a man (1550s)
oil on canvas
105.5 x 83.0 cm

The State Hermitage Museum, St Petersburg (Inv. no. ГЭ-106)
Prov.: Acquired from the collection of Baron Louis-Antoine Crozat de Thiers, Paris, 1772



Domenico CAPRIOLO
Italian (c. 1494)–1528
Portrait of a young man 1512
oil on canvas
117.0 x 85.0 cm

The State Hermitage Museum, St Petersburg (Inv. no. ГЭ-21)
Prov.: Acquired from the collection of Baron Louis-Antoine Crozat de Thiers, Paris, 1772



Giuseppe CESARI, called Il Cavaliere d'ARPINO
Italian 1568–1640
The Archangel Michael (c. 1629)
red and black chalk
31.5 x 24.7 cm (sheet)

The State Hermitage Museum, St Petersburg (Inv. no. OP-3728)
Prov.: Acquired from the collection of Count Cobenzl, Brussels, 1768



Jean-Baptiste Simeon CHARDIN

French 1699–1779

The laundress (1730s)

oil on canvas

37.5 x 42.7 cm

The State Hermitage Museum, St Petersburg (Inv. no. ГЭ-1185)

Prov.: Acquired from the collection of Baron Louis-Antoine Crozat de Thiers, Paris, 1772



CLAUDE LORRAIN

French (c. 1604/05)–1682

Italian landscape 1648

oil on canvas

75.0 x 100.0 cm

The State Hermitage Museum, St Petersburg (Inv. no. ГЭ-1225)

Prov.: Acquired from the collection of Baron Louis-Antoine Crozat de Thiers, Paris, 1772



Charles-Louis CLÉRISSEAU

French 1721–1820

Design for the paintings in the cell of Father Lesueur in the Monastery of Santissima Trinità dei Monti in Rome 1766–68

pen and black and brown ink, brown and grey wash

36.9 x 53.0 cm (sheet)

The State Hermitage Museum, St Petersburg (Inv. no. OP-2597)

Prov.: Acquired from the artist by Catherine II on 5 May 1780, Provenance: before 1797



Charles-Louis CLÉRISSEAU

French 1721–1820

Design for the paintings in the cell of Father Lesueur in the Monastery of Santissima Trinità dei Monti in Rome 1766–68

pen and black and brown ink, brown and grey wash

36.7 x 53.3 cm(sheet)

The State Hermitage Museum, St Petersburg (Inv. no. OP-2598)

Prov.: Acquired from the artist by Catherine II on 5 May 1780



Charles-Louis CLÉRISSEAU

French 1721–1820

The Colosseum (1760s)

gouache, pen and ink

43.2 x 60.0 cm (sheet)

The State Hermitage Museum, St Petersburg (Inv. no. OP-2571)

Prov.: Acquired from the artist by Catherine II on 5 May 1780



Charles-Louis CLÉRISSEAU

French 1721–1820

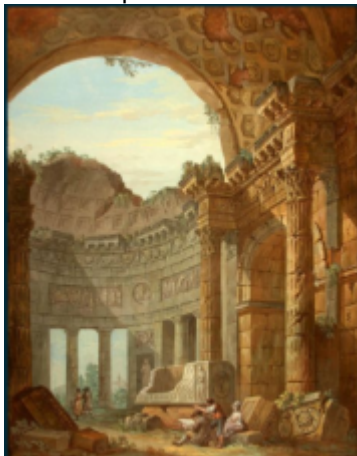
Architectural fantasy with an artist 1782

gouache, pen and brown and ink

60.6 x 47.2 cm (sheet)

The State Hermitage Museum, St Petersburg (Inv. no. OP-16926)

Prov.: Acquired from the artist in 1782



Charles-Louis CLÉRISSEAU

French 1721–1820

Architectural fantasy (with a portico and sarcophagus) 1782

gouache, pen and brown and black ink

47.5 x 60.5 cm (sheet)

The State Hermitage Museum, St Petersburg (Inv. no. OP-16922)

Prov.: Acquired from the artist in 1782



Charles-Louis CLÉRISSEAU

French 1721–1820

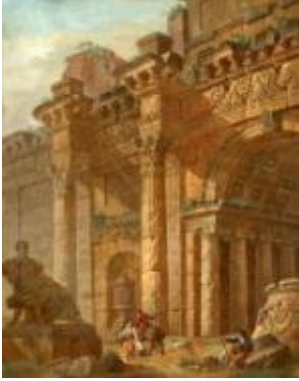
Architectural fantasy (with a statue of Menander) 1782

gouache, pen and brown ink

60.5 x 47.1 cm (sheet)

The State Hermitage Museum, St Petersburg (Inv. no. OP-43672)

Prov.: Acquired from the artist in 1782



François CLOUET

French (c. 1516)–1572

Portrait of Charles IX 1566

black and red chalk

33.1 x 22.5 cm (sheet)

The State Hermitage Museum, St Petersburg (Inv. no. OP-2893)

Prov.: Acquired from the collection of Count Cobenzl, Brussels, 1768



Marie-Anne COLLOT

French 1748–1821

Denis Diderot 1772

marble

57.0 x 28.0 x 27.0 cm

The State Hermitage Museum, St Petersburg (Inv. no. H.ck. 2)

Prov.: Acquired from the artist, 1770s



Marie-Anne COLLOT

French 1748–1821

Voltaire (1770s)

marble

49.0 x 30.0 x 28.0 cm

The State Hermitage Museum, St Petersburg (Inv. no. H.ck. 3)

Prov.: Acquired from the artist, 1778



Jean COUSIN the younger

French (c. 1525– c. 1595)

Jupiter and Semele (c. 1568)

pen and brown ink, violet wash over black chalk

28.5 x 41.5 cm (sheet)

The State Hermitage Museum, St Petersburg (Inv. no. OP-5603)

Prov.: Acquired from the collection of Count Cobenzl, Brussels, 1768



Antoine COYZEVOX

French 1640–1720

Fame riding Pegasus (early 18th century)

bronze

59.0 x 57.0 x 20.0 cm

The State Hermitage Museum, St Petersburg (Inv. no. H.ck. 159)

Prov.: Acquired from the collection of A. D. Lanskoj, St. Petersburg, 1785



Antoine COYZEVOX

French 1640–1720

Mercury riding Pegasus (early 18th century)

bronze

59.0 x 55.0 x 20.0 cm

The State Hermitage Museum, St Petersburg (Inv. no. H.ck. 158)

Prov.: Acquired from the collection of A. D. Lanskoj, St. Petersburg, 1785



Aelbert CUYP

Dutch 1620–91

View of Schravendeel (c. 1645)

black chalk, brown and yellow-green wash and gum arabic

19.3 x 31.1 cm

The State Hermitage Museum, St Petersburg (Inv. no. OP-2689)

Prov.: Acquired from the collection of Count von Bruhl, Dresden, 1769



Leonardo DA VINCI (school of)

Female nude (Donna Nuda) (early 16th century)

oil on canvas

86.5 x 66.5 cm

The State Hermitage Museum, St Petersburg (Inv. no. ГЭ-110)

Prov.: Acquired from the collection of Sir Robert Walpole, Houghton Hall, 1779



Jean Baltazar DE LA TRAVERS

French 1752–(after 1808)

View of the Park at Tsarskoe Selo 1786

watercolour, gouache

24.7 x 46.8 cm

The State Hermitage Museum, St Petersburg (Inv. no. OP-43895)

Prov.: Acquired from the collection of Jacques Aved, Paris, 1766



Louis-Jean DESPREZ

French 1743–1804

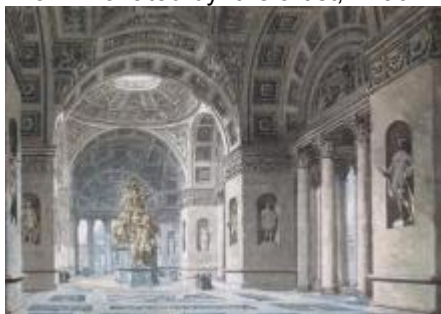
Design for a Temple of Immortality. Interior (c. 1790)

pen and black ink, grey wash, watercolour, gouache, gold

81.2 x 112.1 cm

The State Hermitage Museum, St Petersburg (Inv. no. OP-11807)

Prov.: Donated by the artist, 1790



Cornelis de VOS

Dutch/Flemish (c. 1584)–1651

Self-portrait of the artist with his wife Suzanne Cock and their children (c. 1634)

oil on canvas

185.5 x 221.0 cm

The State Hermitage Museum, St Petersburg (Inv. no. ГЭ-623)

Prov.: Donated by Prince G. A. Potemkin, 1780s



Charles de WAILLY

French 1730–98

Design for a pavilion of the Sciences and the Arts in an English park (View from the side of the entrance to the Temple of Minerva). Sheet from an album 1773

pen and black ink, grey wash

56.2 x 92.3 cm

The State Hermitage Museum, St Petersburg (Inv. no. OP-6869)



Melchior d'HONDECOETER

Dutch 1636–95

Birds in a park 1686

oil on canvas

136.0 x 164.0 cm

The State Hermitage Museum, St Petersburg (Inv. no. ГЭ-1042)

Prov.: Acquired from the collection of Jacques Aved, Paris, 1766



Melchior d'HONDECOETER

Dutch 1636–95

Birds in a park 1686

oil on canvas

135.0 x 155.0 cm

The State Hermitage Museum, St Petersburg (Inv. no. ГЭ-1043)

Prov.: Acquired from the collection of Jacques Aved, Paris, 1766



Lambert Harmensz. DOOMER

Dutch 1624–1700

Bridge across the Loire at Amboise (late 1640s)

pen and brown ink, brown and grey wash

23.1 x 41.1 cm

The State Hermitage Museum, St Petersburg (Inv. no. OP-2827)

Prov.: Acquired before 1797



Jacob DUCK

Dutch 1600–67

Guardroom (1650s)

oil on canvas

149.5 x 207.5 cm

The State Hermitage Museum, St Petersburg (Inv. no. ГЭ-1060)

Prov.: Acquired 1763–74



Gaspard DUGHET

Italian 1615–75

Mountainous landscape (17th century)

oil on canvas

81.0 x 100.5 cm

The State Hermitage Museum, St Petersburg (Inv. no. ГЭ-1203)

Prov.: Acquired from the collection of Sir Robert Walpole, Houghton Hall, 1779



Pierre DUMOUSTIER the elder

French (c. 1545)–1625

Portrait of a youth 1570–75

oil on canvas

32.0 x 19.0 cm

The State Hermitage Museum, St Petersburg (Inv. no. ГЭ-4313)

Prov.: Acquired from the collection of Count Charles Cobenzl, Brussels, 1768



Pierre DUMOUSTIER the elder

French (c. 1545)–1625

Portrait of Etienne Dumoustier (c. 1570)

black and red chalk, touches of pastel

39.5 x 27.6 cm (sheet)

The State Hermitage Museum, St Petersburg (Inv. no. OP-7400)

Prov.: Acquired from the collection of Count Cobenzl, Brussels, 1768



Albrecht DÜRER

German 1471–1528

Study of a seated youth holding scales 1497

pen and brown ink

24.2 x 20.8 cm (sheet)

The State Hermitage Museum, St Petersburg (Inv. no. OP-16)

Prov.: Acquired from the collection of Count Charles Cobenzl, Brussels, 1768



Domenico FETTI
Italian 1589–1623
Portrait of an actor (1620s)
oil on canvas
105.5 x 81.0 cm

The State Hermitage Museum, St Petersburg (Inv. no. ГЭ-153)

Prov.: Acquired from the collection of Baron Louis-Antoine Crozat de Thiers, Paris, 1772



Francesco FRANZIA
Italian (c. 1450)–1517
Sacrifice with Bacchus (1490s)
pen and brown ink
26.0 x 22.5 cm (sheet)

The State Hermitage Museum, St Petersburg (Inv. No. OP-4794)

Prov.: Acquired from the collection of Count Charles Cobenzl, Brussels, 1768



Jan FYT
Flemish 1611–61
Hare, fruit, and parrot 1647
oil on canvas
70.5 x 97.0 cm

The State Hermitage Museum, St Petersburg (Inv. no. ГЭ-616)

Prov.: Acquired before 1797



Jan FYT

Flemish 1611–61

Fox hunt (1650s)

gouache over black chalk on yellowish-grey paper

51.0 x 51.8 cm (sheet)

The State Hermitage Museum, St Petersburg (Inv. no. OP-3083)

Prov.: Acquired from the collection of Count Charles Cobenzl, Brussels, 1768



Carlo GALLI-BIBIENA

Austrian 1728–87

Design for the interior decoration of a library (1770s)

pen and ink, grey wash and watercolour over pencil

32.0 x 44.0cm (sheet)

The State Hermitage Museum, St Petersburg (Inv. no. OP-231)

Prov.: Acquired before 1797



Carlo GALLI-BIBIENA

Austrian 1728–87

Interior of a hall with a caisson dome and a sculpture on a pedestal in the middle and a sculpture on a pedestal in the centre (1770s)

pen and ink, grey wash and watercolour over pencil

45.0 x 63.6 cm (sheet)

The State Hermitage Museum, St Petersburg (Inv. no. OP-206)

Prov.: Acquired before 1797



GIAMBOLOGNA

Italian 1529–1608

Hercules and the Ceryneian Hind (c. 1600)

bronze

38.0 x 19.0 x 15.0 cm

The State Hermitage Museum, St Petersburg (Inv. no. H.ck. 222)

Prov.: Acquired from the collection of A. D. Lansky, St. Petersburg, 1785



Luca GIORDANO

Italian 1634–1705

The Triumph of Galatea (c. 1660)

oil on canvas

206.0 x 306.0 cm

The State Hermitage Museum, St Petersburg (Inv. no. ГЭ-9966)

Prov.: Acquired from the collection of Hofrat Triebel, Berlin, 1771



Hendrick GOLTZIUS

Dutch 1558–1617

Bacchus, Venus and Ceres 1606

pen and brown ink on canvas

219.0 x 163.0 cm (sheet)

The State Hermitage Museum, St Petersburg (Inv. no. OP-18983)

Prov.: Acquired from the collection of Baron Louis-Antoine Crozat de Thiers, Paris, 1772



Hendrick GOLTZIUS

Dutch 1558–1617

A courtesan 1606

red, black, and white chalk on light grey paper

24.0 x 19.0 cm (sheet)

The State Hermitage Museum, St Petersburg (Inv. no. OP-3742)

Prov.: Acquired from the collection of Count Cobenzl, Brussels, 1768



Jean-Baptiste GREUZE

French 1725–1805

Filial Piety (The paralytic) 1763

oil on canvas

115.5 x 146.0 cm

The State Hermitage Museum, St Petersburg (Inv. no. ГЭ-1168)

Prov.: Acquired from the artist, 1766



Jean-Baptiste GREUZE

French 1725–1805

Figure of a young man with a plate in his hand (The son-in-law; second version). Study for The paralytic (1760s)

red chalk

48.1 x 32.0 cm (sheet)

The State Hermitage Museum, St Petersburg (Inv. no. OP-14792)

Prov.: Acquired from the artist in 1769 for the Museum of the Academy of Arts. Transferred to the Hermitage in 1924



Jean-Baptiste GREUZE

French 1725–1805

Head of an old man. Study for The paralytic (1760s)

red and black chalk

49.3 x 40.0 cm (sheet)

The State Hermitage Museum, St Petersburg (Inv. no. OP-14727)

Prov.: Acquired from the artist in 1769 for the Museum of the Academy of Arts. Transferred to the Hermitage in 1924



Jean-Baptiste GREUZE

French 1725–1805

The schoolmistress (1760s)

pen and grey, black and brown ink, grey, black and brown wash

33.0 x 44.4 cm (sheet)

The State Hermitage Museum, St Petersburg (Inv. no. OP-3746)

Prov.: Acquired from the collection of Count Cobenzl, Brussels, 1768



Jean-Baptiste GREUZE

French 1725–1805

Study of a boy carrying a cup (Second version). Study for The paralytic (1760s)

red chalk

43.3 x 29.9 cm (sheet)

The State Hermitage Museum, St Petersburg (Inv. no. OP-14784)

Prov.: Acquired from the artist in 1769 for the Museum of the Academy of Arts. Transferred to the Hermitage in 1924



Jean-Baptiste GREUZE

French 1725–1805

Study of a boy kneeling. Study for The paralytic (1760s)

red chalk

32.8 x 45.9 cm (sheet)

The State Hermitage Museum, St Petersburg (Inv. no. OP-14798)

Prov.: Acquired from the artist in 1769 for the Museum of the Academy of Arts. Transferred to the Hermitage in 1924



Jean-Baptiste GREUZE

French 1725–1805

Study of a dog. Study for The paralytic (1760s)

red and black chalk

32.8 x 45.3 cm (sheet)

The State Hermitage Museum, St Petersburg (Inv. no. OP-14770)

Prov.: Acquired from the artist in 1769 for the Museum of the Academy of Arts. Transferred to the Hermitage in 1924



Jean-Baptiste GREUZE

French 1725–1805

Study of a seated woman (the paralytic's wife). Study for The paralytic (1760s)

red chalk

38.8 x 29.4 cm (sheet)

The State Hermitage Museum, St Petersburg (Inv. no. OP-14802)

Prov.: Acquired from the artist in 1769 for the Museum of the Academy of Arts. Transferred to the Hermitage in 1924



GUERCINO

Italian 1591–1666

The raising of Tabitha (c. 1618)

pen and brown ink, brown wash, over stylus underdrawing

20.0 x 24.0 cm (sheet)

The State Hermitage Museum, St Petersburg (Inv. no. OP-3763)

Prov.: Acquired from the collection of Count Cobenzl, Brussels, 1768



Jacob Philipp HACKERT

German 1737–1807

Destruction of the Turkish fleet in the Bay of Chesme 1771

oil on canvas

162.5 x 220.0 cm

The State Hermitage Museum, St Petersburg (Inv. no. ГЭ-2048)

Prov.: Acquired before 1797



Frans HALS

Flemish 1581/85–1666

Portrait of a young man holding a glove (c. 1650)

oil on canvas

80.0 x 66.5 cm

The State Hermitage Museum, St Petersburg (Inv. no. ГЭ-982)

Prov.: Acquired from the collection of Johann Gotzkowski, Berlin, 1764



Jean-Antoine HOUDON

French 1741–1828

Catherine II 1773

marble

90.0 x 50.0 x 32.0 cm

The State Hermitage Museum, St Petersburg (Inv. no. H.ck. 1676)

Prov.: Transferred from the Stroganov Palace, Leningrad, 1928



Jean-Antoine HOUDON

French 1741–1828

Comte de Buffon 1782

marble

61.0 x 30.0 x 25.0 cm

The State Hermitage Museum, St Petersburg (Inv. no. H.ck. 225)

Prov.: Acquired from the artist, 1782



Jacob JORDAENS

Flemish 1593–1678

Saints Paul and Barnabas in Lystra (c. 1616)

oil on canvas

149.0 x 253.0 cm

The State Hermitage Museum, St Petersburg (Inv. no. ГЭ-491)

Prov.: Acquired from the collection of Count Heinrich von Brühl, Dresden 1769



Jacob JORDAENS
Flemish 1593–1678

Allegorical family portrait (1650s)

oil on canvas

178.4 x 152.3 cm

The State Hermitage Museum, St Petersburg (Inv. no. ГЭ-485)

Prov.: Acquired from the collection of Johann Gotzkowsky, Berlin, 1764



Angelica KAUFFMANN

Swiss 1740–1807

The farewell of Abelard and Heloise (c. 1789)

oil on canvas

65.5 x 65.5 cm

The State Hermitage Museum, St Petersburg (Inv. no. ГЭ 1338)

Prov.: Acquired before 1797



Godfrey KNELLER

German 1646–1723

Portrait of Pyotr Ivanovich Potyomkin 1681–82

oil on canvas

135.0 x 103.5 cm

The State Hermitage Museum, St Petersburg (Inv. no. ГЭ-10584)

Prov.: Acquired from the collection of Prince Grigory Potemkin, St Petersburg, 1792



Godfrey KNELLER

German 1646–1723

Portrait of Grinling Gibbons (c. 1690)

oil on canvas

125.5 x 101.0 cm

The State Hermitage Museum, St Petersburg (Inv. no. ГЭ-1346)

Prov.: Acquired from the collection of Sir Robert Walpole, Houghton Hall, 1779



Nicolas LANCRET

French 1690–1743

Concert in the park (1720s –30s)

oil on canvas

96.0 x 107.0 cm

The State Hermitage Museum, St Petersburg (Inv. no. ГЭ-5624)

Prov.: Acquired 1763–74



Peter LELY

Dutch/English 1618–80

Knight of the Order of the Garter (1660s)

black and white chalk on grey paper

55.7 x 33.5 cm (sheet)

The State Hermitage Museum, St Petersburg (Inv. no. OP-5926)

Prov.: Acquired from the collection of Count Cobenzl, Brussels, 1768



Louis Le NAIN
French 1593–1648
The milkmaid's family (c. 1641)
oil on canvas
51.0 x 59.0 cm
The State Hermitage Museum, St Petersburg (Inv. no. ГЭ-1152)
Prov.: Acquired 1763–74



Daniel LINDTMEYER
Swiss 1552–1604
Stained glass design with the arms of Rheinau 1585
pen and brown ink and wash
49.8 x 36.0 cm (sheet)
The State Hermitage Museum, St Petersburg (Inv. no. OP-4361)
Prov.: Acquired from the collection of Count Cobenzl, Brussels, 1768



Lorenzo LOTTO
Italian (c. 1480)–1556
The Rest on the Flight into Egypt with Saint Justine 1529–30
oil on canvas
83.0 x 132.5 cm
The State Hermitage Museum, St Petersburg (Inv. no. ГЭ-2204)
Prov.: Acquired 1774–83



Giuseppe MANOCCHI
Italian (c. 1731)–1782
Architectural fantasy (1770s)
watercolour
57.0 x 46.0 cm (sheet)
The State Hermitage Museum, St Petersburg (Inv. no. OP-4503)
Prov.: Acquired before 1797



Giuseppe MANOCCHI
Italian (c. 1731)–1782
The ruins of the Temple of Jupiter the Thunderer in the Roman Forum (1770s)
watercolour, pen and black ink
68.8 x 48.8 cm (sheet)
The State Hermitage Museum, St Petersburg (Inv. no. OP-4498)
Prov.: Acquired before 1797



Johann Georg MAYR
German 1760–1816
View of Palace Embankment from the Spit of Vasilyevsky Island 1796
oil on canvas
77.0 x 117.0 cm
The State Hermitage Museum, St Petersburg (Inv. ЭРЖ-2219)
Prov.: Transferred from the State Russian Museum, Leningrad, 1953



Claude MELLAN

French 1598–1688

Portrait of Nicolas-Claude Peiresc (1630s)

black chalk

20.0 x 14.8 cm (sheet)

The State Hermitage Museum, St Petersburg (Inv. no. OP-4635)

Prov.: Acquired from the collection of Count Cobenzl, Brussels, 1768



Anton Raphael MENGES

Bohemian 1728–79

Saint John the Baptist preaching in the wilderness (c. 1774)

oil on canvas

208.0 x 153.0 cm

The State Hermitage Museum, St Petersburg (Inv. no. ГЭ-1332)

Prov.: Acquired 1774–83



Gabriel METSU

Flemish 1629–67

The doctor's visit (1660s)

oil on canvas

61.5 x 47.5 cm

The State Hermitage Museum, St Petersburg (Inv. no. ГЭ-919)

Prov.: Acquired from the collection of Jean de Jullienne, Paris, 1767



Bartolomé Esteban MURILLO

Spanish 1617–82

The Adoration of the Shepherds (c. 1650)

oil on canvas

197.0 x 147.0 cm

The State Hermitage Museum, St Petersburg (Inv. no. ГЭ-316)

Prov.: Acquired from the collection of Sir Robert Walpole, Houghton Hall, 1779



Bartolomé Esteban MURILLO

Spanish 1617–82

The Rest on the Flight into Egypt (c. 1655–70)

oil on canvas

136.5 x 179.5 cm

The State Hermitage Museum, St Petersburg (Inv. no. ГЭ-340)

Prov.: Acquired from the collection of Jean-Louis de Gaignat, Paris, 1769



Ilya NEYELOV

Russian 1745–93

Design for a building in the Chinese Village at Tsarskoe Selo (1770s)

pen and ink, watercolour

35.0 x 25.0 cm (sheet)

The State Hermitage Museum, St Petersburg (Inv. no. OP-23372)

Prov.: Acquired before 1797



Ilya NEYELOV
Russian 1745–93
Design for an octagonal Chinese pavilion with balconies (1770s)
pen and ink, watercolour
32.0 x 22.0 cm (sheet)
The State Hermitage Museum, St Petersburg (Inv. no. OP-23368)
Prov.: Acquired before 1797



Ilya NEYELOV
Russian 1745–93
Design for a pagoda for the Chinese Village at Tsarskoe Selo (1770s)
pen and ink, watercolour
35.5 x 23.5 cm (sheet)
The State Hermitage Museum, St Petersburg (Inv. no. OP-23369)
Prov.: Acquired before 1797



Ilya NEYELOV
Russian 1745–93
Design for a pavilion for the Chinese Village at Tsarskoe Selo (1770s)
pen and ink, watercolour
47.5 x 34.5 cm (sheet)
The State Hermitage Museum, St Petersburg (Inv. no. OP-23374)
Prov.: Acquired before 1797



Ilya NEYELOV
 Russian 1745–93
Design for a round two-storey building in the Chinese Village at Tsarskoe Selo (1770s)
 pen and ink, watercolour
 47.5 x 34.0 cm (sheet)
 The State Hermitage Museum, St Petersburg (Inv. no. OP-23373)
 Prov.: Acquired before 1797



Ilya NEYELOV
 Russian 1745–93
Design for the gates for the Chinese Village at Tsarskoe Selo (1770s)
 pen and ink, watercolour
 35.0 x 25.0 cm (sheet)
 The State Hermitage Museum, St Petersburg (Inv. no. OP-23370)
 Prov.: Acquired before 1797



Giovanni OTTAVIANI

Italian 1735–1808

Adam and Eve with Cain and Abel (1770s)

hand coloured engraving

81.0 x 71.2 cm (image)

The State Hermitage Museum, St Petersburg (Inv. no. OF-122696)

Prov.: Acquired before 1820



Giovanni OTTAVIANI

Italian 1735–1808

Jacob's Ladder (1770s)

hand coloured engraving

67.5 x 60.8 cm (image)

The State Hermitage Museum, St Petersburg (Inv. no. OF-122711)



Giovanni OTTAVIANI

Italian 1735–1808

Moses descending Mount Sinai with the Tablets of the Law (1770s)

hand coloured engraving

81.0 x 71.5 cm (image)

The State Hermitage Museum, St Petersburg (Inv. no. OF-122703)

Prov.: Acquired before 1820



Giovanni OTTAVIANI
Italian 1735–1808
The three angels before Abraham (1770s)
hand coloured engraving
81.0 x 71.5 cm (image)
The State Hermitage Museum, St Petersburg (Inv. no. OF-122698)



Giovanni OTTAVIANI
Italian 1735–1808
Gaetano SAVORELLI
Italian, active (1770s)
Pietro CAMPARESI
Italian 1726–81
Compositions with putti, leopards and grapes (1770s)
hand coloured engraving
120.0 x 51.0 cm (image)
The State Hermitage Museum, St Petersburg (Inv. no. OF-122735)
Prov.: Acquired before 1820



Giovanni OTTAVIANI
Italian 1735–1808
Gaetano SAVORELLI
Italian, active (1770s)
Pietro CAMPARESI
Italian 1726–81
Grotesque with birds and a porcupine (1770s)
hand coloured engraving
121.0 x 51.1 cm (image)
The State Hermitage Museum, St Petersburg (Inv. no. OF-122732)
Prov.: Acquired before 1820



Jean-Baptiste OUDRY

French 1686–1755

Boar hunt 1730

pen and ink, grey wash, heightened with white, on brownish-grey paper

28.0 x 40.0 cm (sheet)

The State Hermitage Museum, St Petersburg (Inv. no. OP-4872)

Prov.: Acquired from the collection of Count Cobenzl, Brussels, 1768



Giovanni Paolo PANINI

Italian 1691–1765

Saint Sybil preaching amidst Roman ruins with a statue of Apollo (1740s)

oil on canvas

81.0 x 125.0 cm

The State Hermitage Museum, St Petersburg (Inv. no. ГЭ-174)

Prov.: Acquired 1763–74



Tiburzio PASSAROTTI

Italian (c. 1555)–1612

Loading camels (late 16th century)

pen and brown ink, brown wash

37.4 x 50.5 cm (sheet)

The State Hermitage Museum, St Petersburg (Inv. no. OP-1642)

Prov.: Acquired from the collection of Count Cobenzl, Brussels, 1768



Benjamin PATERSEN

Swedish 1750–1815

St Isaac's Pontoon Bridge and Senate Square from Vasilyevsky Island 1794

oil on canvas

65.0 x 85.0 cm

The State Hermitage Museum, St Petersburg (Inv. no. ЭРЖ-1669)

Prov.: Transferred from the State Russian Museum, Leningrad, 1950



Benjamin PATERSEN

Swedish 1750–1815

View of Sennaya Square (the Haymarket) (before 1797)

oil on canvas

57.5 x 89.5 cm

The State Hermitage Museum, St Petersburg (Inv. no. ЭРЖ-1904)

Prov.: Transferred from the State Russian Museum, Leningrad, 1950



Benjamin PATERSEN

Swedish 1750–1815

The embankment on Vasilyevsky Island by the Academy of Fine Arts (c. 1799)

oil on canvas

64.5 x 93.7 cm

The State Hermitage Museum, St Petersburg (Inv. no. ЭРЖ-1901)

Prov.: Transferred from the State Russian Museum, Leningrad, 1950



Benjamin PATERSEN

Swedish 1750–1815

View of the English Embankment from Vasilyevsky Island (1790s)

oil on canvas

68.2 x 85.0 cm

The State Hermitage Museum, St Petersburg (Inv. no. ЭРЖ-1668)

Prov.: Transferred from the State Russian Museum, Leningrad, 1950



Benjamin PATERSEN

Swedish 1750–1815

View of Palace Square and the Winter Palace from the Start of Nevsky Prospekt 1801

oil on canvas

64.0 x 99.0 cm

The State Hermitage Museum, St Petersburg (Inv. no. ЭРЖ-1902)

Prov.: Transferred from the State Russian Museum, Leningrad, 1950



Georg PENCZ

German (c. 1500)–1550

Saint John the Evangelist (between 1525 and 1528)

charcoal

44.7 x 17.2 cm (sheet)

The State Hermitage Museum, St Petersburg (Inv. no. OP-21)

Prov.: Acquired from the collection of Count Cobenzl, Brussels, 1768



Jean-Baptiste PERRONNEAU

French 1715–83

Portrait of a boy with a book (1740s)

oil on canvas

63.0 x 52.0 cm

The State Hermitage Museum, St Petersburg (Inv. no. ГЭ-1270)

Prov.: Acquired from the collection of A. G. Teplov, St Petersburg, 1781



Giovanni Battista PIAZZETTA

Italian 1682–1754

Rinaldo and Armida (1720s –30s)

black chalk

24.5 x 20.1 cm (sheet)

The State Hermitage Museum, St Petersburg (Inv. no. OP–5028)

Prov.: Acquired from the collection of Count von Bruhl, Dresden, 1769



Giambattista PITTONI

Italian 1687–1767

Sacrifice of Polyxena (1730s)

oil on canvas

129.0 x 94.0 cm

The State Hermitage Museum, St Petersburg (Inv. no. ГЭ-8464)

Prov.: Acquired from the collection of Count Heinrich von Brühl, Dresden, 1769



Nicolas POUSSIN

French 1594–1665

Moses striking water from the rock (1650s)

pen and brown ink, brown wash, over pencil, touched with white

19.0 x 26.0 cm (sheet)

The State Hermitage Museum, St Petersburg (Inv. no. OP-14539)

Prov.: Acquired from Jean de Jullienne collection in Paris in 1767 (?) for the Museum of the Academy of Arts.

Transferred to the Hermitage in 1924



Francesco PRIMATICCIO

Italian 1504–70

Jupiter, Neptune and Pluto (between 1541 and 1547)

pen and brown ink, brown wash, heightened with white on light brown paper, squared in black chalk

31.5 x 33.5 cm (sheet)

The State Hermitage Museum, St Petersburg (Inv. no. OP-7426)

Prov.: Acquired from the collection of Count Cobenzl, Brussels, 1768



Giulio Cesare PROCACCINI

Italian 1570–1625

The Holy Family with John the Baptist and an angel (1620–25)

oil on canvas

157.0 x 107.5 cm

The State Hermitage Museum, St Petersburg (Inv. no. ГЭ-102)

Prov.: Acquired 1763–74



Giacomo QUARENGHI

Italian 1744–1817

Façade of the Exchange 1783

pen and ink, watercolour

35.0 x 58.0 cm (sheet)

The State Hermitage Museum, St Petersburg (Inv. no.OP-10507)

Prov.: Acquired from Giulio Quarenghi in 1818



Giacomo QUARENGHI

Italian 1744–1817

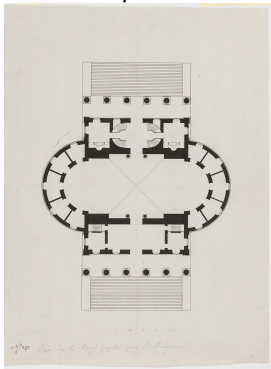
Plan of the Exchange 1783

pen and ink

49.0 x 36.5 cm (sheet)

The State Hermitage Museum, St Petersburg (Inv. no. OP-9717)

Prov.: Acquired from Giulio Quarenghi in 1818



Giacomo QUARENGHI

Italian 1744–1817

Cross-section of the Hermitage Theatre (1780s)

pen and ink, grey wash

19.2 x 29.0 cm (sheet)

The State Hermitage Museum, St Petersburg (Inv. no. OP-9630)

Prov.: Acquired from Giulio Quarenghi in 1818



Giacomo QUARENGHI

Italian 1744–1817

Façade of the Hermitage Theatre (1780s)

pen and ink, watercolour

33.0 x 47.0 cm (sheet)

The State Hermitage Museum, St Petersburg (Inv. no. OP-9626)

Prov.: Acquired from Giulio Quarenghi in 1818



Giacomo QUARENGHI

Italian 1744–1817

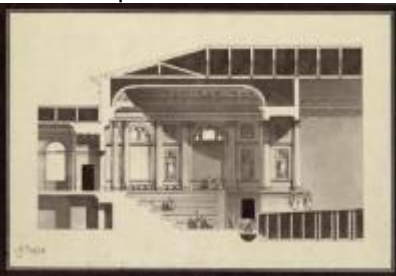
Longitudinal section of the Hermitage Theatre (1780s)

pen and ink, grey wash

19.2 x 29.0 cm (sheet)

The State Hermitage Museum, St Petersburg (Inv. no. OP-9629)

Prov.: Acquired from Giulio Quarenghi in 1818



Giacomo QUARENGHI

Italian 1744–1817

Cross-section of the Gallery by the Hanging Garden (early 1800s)

pen and ink, watercolour

38.5 x 64.5 cm (sheet)

The State Hermitage Museum, St Petersburg (Inv. no. OP-9701)

Prov.: Acquired from Giulio Quarenghi in 1818



Giacomo QUARENGHI

Italian 1744–1817

Design for the interior finishes of the Hermitage Picture Gallery (early 1800s)

pen and ink, watercolour

53.5 x 99.5 cm (sheet)

The State Hermitage Museum, St Petersburg (Inv. no. OP-9699)

Prov.: Acquired from Giulio Quarenghi in 1818



Giacomo QUARENGHI

Italian 1744–1817

Museum halls over the stables and menagerie. Longitudinal section and plan (early 1800s)

pen and ink, watercolour

48.2 x 96.5 cm (sheet)

The State Hermitage Museum, St Petersburg (Inv. no. OP-9698)

Prov.: Acquired from Giulio Quarenghi in 1818



REMBRANDT Harmensz. van Rijn

Dutch 1606–69

Youth in oriental costume (1630/31)

red chalk

24.5 x 17.5 cm (sheet)

The State Hermitage Museum, St Petersburg (Inv. no. ГЭ-14946)

Prov.: Acquired from Ivan Betskoy collection in 1767 for the Museum of the Academy of Arts. Transferred to the Hermitage in 1924



REMBRANDT Harmensz. van Rijn

Dutch 1606–69

Portrait of a scholar 1631

oil on canvas

104.5 x 92.0 cm (Inv. no. ГЭ-744)

The State Hermitage Museum, St Petersburg

Prov.: Acquired from the collection of Count Heinrich von Brühl, Dresden, 1769



REMBRANDT Harmensz. van Rijn (workshop of)

Dutch 1606–69

Portrait of a young man in a beret (1640s)

oil on canvas

83.5 x 66.0 cm

The State Hermitage Museum, St Petersburg (Inv. no. ГЭ-761)

Prov.: Acquired before 1797



REMBRANDT Harmensz. van Rijn

Dutch 1606–69

Young woman trying on earrings 1657

oil on wood panel

39.5 x 32.5 cm

The State Hermitage Museum, St Petersburg (Inv. no. ГЭ-784)

Prov.: Acquired from the collection of the Comte de Baudouin, Paris, 1781



Guido RENI (?)

Italian 1575–1642

Building of Noah's Ark (1610s)

oil on canvas

193.5 x 154.5 cm

The State Hermitage Museum, St Petersburg (Inv. no. ГЭ-51)

Prov.: Acquired from the collection of Count Heinrich von Brühl, Dresden, 1769



Joshua REYNOLDS

English 1723–92

Cupid untying the zone of Venus 1788

oil on canvas

127.5 x 101.0 cm

The State Hermitage Museum, St Petersburg (Inv. no. ГЭ-1320)

Prov.: Acquired from the collection of Prince Grigory Potemkin, St Petersburg, 1792



Theodor ROMBOUTS

Flemish 1597–1637

Card game (c. 1630)

oil on canvas

143.0 x 224.0 cm

The State Hermitage Museum, St Petersburg (Inv. no. ГЭ-522)

Prov.: Acquired 1763–74



Alexander ROSLIN
Swedish 1718–93
Portrait of Catherine II 1776–77
oil on canvas
271.0 x 189.5 cm
The State Hermitage Museum, St Petersburg (Inv. no. ГЭ-1316)
Prov.: Acquired from the artist, 1777



Peter Paul RUBENS
Flemish 1577–1640
Roman Charity (Cimon and Pero) (c. 1612)
oil on canvas
140.5 x 180.3 cm
The State Hermitage Museum, St Petersburg (Inv. no. ГЭ-470)
Prov.: Acquired from the collection of Count Charles Cobenzl, Brussels, 1768



Peter Paul RUBENS and workshop
Flemish 1577–1640
The Apostle Paul (c. 1615)
oil on wood panel
105.6 x 74.0 cm
The State Hermitage Museum, St Petersburg (Inv. no. ГЭ-489)
Prov.: Acquired before 1774



Peter Paul RUBENS

Flemish 1577–1640

Head of a Franciscan monk 1615–17

oil on canvas

52.0 x 44.0 cm

The State Hermitage Museum, St Petersburg (Inv. no. ГЭ 472)

Prov.: Acquired from the collection of Sir Robert Walpole, Houghton Hall, 1779



Peter Paul RUBENS

Flemish 1577–1640

Sheet of studies: Head of a man looking up, hand, and lower part of a head in profile (1618–19)

black and white chalk on yellow-grey paper

32.0 x 22.0 cm (image)

The State Hermitage Museum, St Petersburg (Inv. no. OP-5454)

Prov.: Acquired from the collection of Count Cobenzl, Brussels, 1768



Peter Paul RUBENS and workshop

Flemish 1577–1640

The Adoration of the Magi (c. 1620)

oil on canvas

235.0 x 277.5 cm

The State Hermitage Museum, St Petersburg (Inv. № ГЭ-494)

Prov.: Acquired from the collection of Dufresne, Amsterdam, 1770



Peter Paul RUBENS
Flemish 1577–1640
The carters (c. 1620)
oil on canvas
86.0 x 126.5 cm
The State Hermitage Museum, St Petersburg (Inv. no. ГЭ-480)



Peter Paul RUBENS
Flemish 1577–1640
Abraham DIEPENBEECK
Flemish 1596–1675
The Wedding of the Virgin (early 1630s)
black chalk, pen and brown ink, brown wash, grey gouache, heightened with white
57.0 x 43.5 cm (sheet)
The State Hermitage Museum, St Petersburg (Inv. no. OP-5523)
Prov.: Acquired from the collection of Count Cobenzl, Brussels, 1768



Peter Paul RUBENS and workshop
Flemish 1577–1640
Lioness and two lions (1640)
oil on canvas
171.0 x 248.5 cm
The State Hermitage Museum, St Petersburg (Inv. no. ГЭ 465)
Prov.: Acquired from the collection of Sir Robert Walpole, Houghton Hall, 1779



Francesco SALVIATI

Italian 1510–63

Roman soldier running (late 1540s)

pen and brown and black ink, brown and grey wash, heightened with white

27.5 x 20.7 cm (sheet)

The State Hermitage Museum, St Petersburg (Inv. no. OP-4654)

Prov.: Acquired from the collection of Count von Bruhl, Dresden, 1769



Jean-Baptiste SANTERRE

French 1651–1717

Two actresses 1699

oil on canvas

146.0 x 114.0 cm

The State Hermitage Museum, St Petersburg (Inv. no. ГЭ-1284)

Prov.: Acquired 1768



Luca SIGNORELLI

Italian 1450–1523

Study of the head of an elderly man (1480s)

pen and brown ink, brown wash

26.9 x 18.7 cm (sheet)

The State Hermitage Museum, St Petersburg (Inv. no. OP-7228)

Prov.: Acquired from the collection of Count Cobenzl, Brussels, 1768



Frans SNYDERS
Flemish 1579–1657
Concert of birds (1630–40)
oil on canvas
136.5 x 240.0 cm

The State Hermitage Museum, St Petersburg (Inv. no. ГЭ-607)
Prov.: Acquired from the collection of Sir Robert Walpole, Houghton Hall, 1779



Frans SNYDERS
Flemish 1579–1657
Jan BOECKHORST
German 1605–68
Cook at a kitchen table with dead game (c. 1636–37)
oil on canvas
171.0 x 173.0 cm

The State Hermitage Museum, St Petersburg (Inv. no. ГЭ 608)
Prov.: Acquired from the collection of Johann Gotzkowsky, Berlin, 1764



Frans SNYDERS
Flemish 1579–1657
Fruit in a bowl on a red cloth (1640s)
oil on canvas
59.8 x 90.8 cm

The State Hermitage Museum, St Petersburg (Inv. no. ГЭ-612)
Prov.: Acquired before 1797



David TENIERS II

Flemish 1610–90

Kitchen 1646

oil on canvas

171.0 x 237.0 cm

The State Hermitage Museum, St Petersburg (Inv. no. ГЭ-586)

Prov.: Acquired from the collection of Sir Robert Walpole, Houghton Hall, 1779



David TENIERS II

Flemish 1610–90

Village festival 1646

oil on canvas

97.0 x 130.0 cm

The State Hermitage Museum, St Petersburg (Inv. no. ГЭ-594)

Prov.: Acquired from the collection of the Duke de Choiseul, Paris, 1772



TITIAN

Italian (1485–90)–1576

Portrait of a young woman (c. 1536)

oil on canvas

96.0 x 75.0 cm

The State Hermitage Museum, St Petersburg (Inv. no. ГЭ-71)

Prov.: Acquired from the collection of Baron Louis-Antoine Crozat de Thiers, Paris, 1772



Pavel Lavrentyevich UCHITELEV

Russian active (1790s –1800s)

View of the façade of the Agate Rooms at Tsarskoe Selo (1790s)

pen and ink, watercolour

57.8 x 71.0 cm (sheet)

The State Hermitage Museum, St Petersburg (Inv. no. OP-11071)

Prov.: Acquired from Charles Cameron's descendants in London as part of Cameron's archives, 1822



Konstantin UKHTOMSKY

Russian 1818–81

The Raphael Loggia 1860

watercolour

42.0 x 25.0 cm (sheet)

The State Hermitage Museum, St Petersburg (Inv. no. OP-11741)

Prov.: Acquired from the author in 1860.



UNKNOWN, (English)

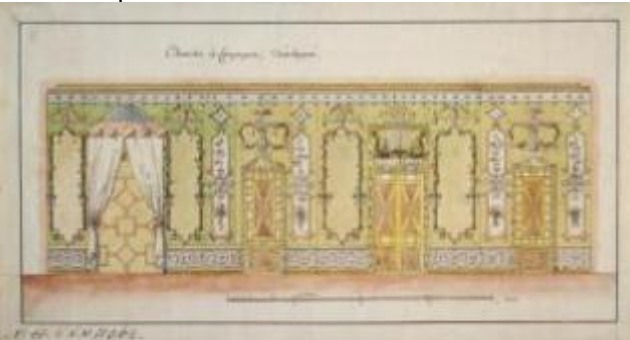
Design for a wall finish with arabesques and trelliswork (1770s)

pen and ink, watercolour

25.0 x 46.0 cm (sheet)

The State Hermitage Museum, St Petersburg (Inv. no. OP-11062)

Prov.: Acquired before 1797



Giuseppe VALERIANI

Italian (c. 1708)–1762

Design for sets for the opera Siroe (1760)

pen and brown ink, brown wash

53.5 x 72.5 cm (sheet)

The State Hermitage Museum, St Petersburg (Inv. no. OP-6273)

Prov.: Acquired before 1797



Giuseppe VALERIANI

Italian (c. 1708)–1762

Vestibule of a palace with numerous columns and figures (mid 18th century)

pen and ink and grey wash over pencil

35.1 x 51.2 cm (sheet)

The State Hermitage Museum, St Petersburg (Inv. no. OP-6261)

Prov.: Acquired before 1797



Pieter Coecke van AELST

Flemish 1502–50

Juan III of Portugal and Catherine of Austria with their patrons Saint John the Baptist and Saint Catherine of Alexandria 1542

pen and brown ink, brown and grey wash

55.0 x 31.5 cm (sheet)

The State Hermitage Museum, St Petersburg (Inv. no. OP-5850)

Prov.: Acquired from the collection of Count Cobenzl, Brussels, 1768



Maerten Fransz. van der HULFT
Dutch active (1635–46)
The River Maas near Dordrecht 1643

oil on canvas

101.0 x 183.5 cm

The State Hermitage Museum, St Petersburg (Inv. no. ГЭ-1032)

Prov.: Acquired before 1797



Dirck van der LISSE
Dutch 1607–69
The Rest on the Flight into Egypt (1660s)

oil on canvas

119.0 x 160.0 cm

The State Hermitage Museum, St Petersburg (Inv. no. ГЭ-1061)

Prov.: Acquired from the collection of Johann Gotzkowski, Berlin, 1764



Aert van der NEER
Dutch (1603/04)–1677
A town by night 1650

oil on canvas

57.5 x 75.0 cm

The State Hermitage Museum, St Petersburg (Inv. no. ГЭ-925)

Prov.: Acquired from the collection of Count Heinrich von Brühl, Dresden, 1769



Anthony van DYCK
Flemish 1599–1641
Family portrait (c. 1619)
oil on canvas
113.5 x 93.5 cm (Inv. no. ГЭ-534)
The State Hermitage Museum, St Petersburg
Prov.: Acquired from the private collection, Brussels, 1774



Anthony van DYCK
Flemish 1599–1641
Pentecost (c. 1620)
pen and brown ink, brown, grey and green wash, heightened with white
25.8 x 21.7 cm (image)
The State Hermitage Museum, St Petersburg (Inv. no. OP-14537)
Prov.: Acquired from Jean de Julliene collection in Paris in 1767 (?) for the Museum of the Academy of Arts.
Transferred to the Hermitage in 1924



Anthony van DYCK
Flemish 1599–1641
Portrait of King Charles I (c. 1638)
oil on canvas
219.0 x 130.0 cm
The State Hermitage Museum, St Petersburg (Inv. no. ГЭ-537)
Prov.: Acquired from the collection of Sir Robert Walpole, Houghton Hall, 1779



Anthony van DYCK
Flemish 1599–1641

Portrait of Queen Henrietta Maria (c. 1638)

oil on canvas

220.0 x 131.5 cm

The State Hermitage Museum, St Petersburg (Inv. no. ГЭ-541)

Prov.: Acquired from the collection of Sir Robert Walpole, Houghton Hall, 1779



Anthony van DYCK
Flemish 1599–1641

Portrait of Philadelphia and Elizabeth Wharton 1640

oil on canvas

162.0 x 130.0 cm

The State Hermitage Museum, St Petersburg (Inv. no. ГЭ-533)

Prov.: Acquired from the collection of Sir Robert Walpole, Houghton Hall, 1779



Gerrit van HONTHORST
Dutch 1592–1656

A convivial fellow 1624

oil on canvas

84.0 x 66.5 cm

The State Hermitage Museum, St Petersburg (Inv. no. ГЭ-717)

Prov.: Acquired from the collection of Johann Gotzkowski, Berlin, 1764



Gerrit van HONTHORST

Dutch 1590–1656

Lute player 1624

oil on canvas

84.0 x 66.5 cm

The State Hermitage Museum, St Petersburg (Inv. no. ГЭ-718)

Prov.: Acquired from the collection of Johann Gotzkowski, Berlin, 1764



Jean-Baptiste VANLOO

French 1684–1745

Portrait of Sir Robert Walpole 1740

oil on canvas

229.0 x 143.0 cm

The State Hermitage Museum, St Petersburg (Inv. no. ГЭ-1130)

Prov.: Acquired from the collection of Sir Robert Walpole, Houghton Hall, 1779



Charles VANLOO

French 1705–65

Sultan's wife embroidering (1750s)

oil on canvas

120.0 x 127.0 cm

The State Hermitage Museum, St Petersburg (Inv. no. ГЭ-7490)

Prov.: Acquired from the collection of Madame Marie-Thérèse Geoffrin, Paris, 1772



Charles VANLOO

French 1705–65

Sultan's wife drinking coffee (1750s)

oil on canvas

120.0 x 127.0 cm

The State Hermitage Museum, St Petersburg (Inv. no. ГЭ-7489)

Prov.: Acquired from the collection of Madame Marie-Thérèse Geoffrin, Paris, 1772



Isaack Jansz. van OSTADE

Dutch 1621–49

Frozen lake 1648

oil on canvas

59.0 x 183.0 cm

The State Hermitage Museum, St Petersburg (Inv. no. ГЭ-907)

Prov.: Acquired from the collection of Count Heinrich von Brühl, Dresden, 1769



Pieter Cornelisz. van RIJCK

Dutch 1567–1637

Kitchen scene (Christ at Emmaus) 1605

pen and brown ink, brown wash over lead pencil

26.7 x 41.0 cm (sheet)

The State Hermitage Museum, St Petersburg (Inv. no. OP-7833)

Prov.: Acquired from the collection of Count von Bruhl, Dresden, 1769



Jacob van RUISDAEL

Dutch (1628)–1682

Waterfall in Norway 1660–70

oil on canvas

108.0 x 142.5 cm

The State Hermitage Museum, St Petersburg (Inv. no. ГЭ-942)

Prov.: Acquired from the collection of Count Heinrich von Brühl, Dresden, 1769



Jacob van RUISDAEL

Dutch (1628)–1682

Landscape with a wooden footbridge over a canal (c. 1670)

black chalk, grey wash

19.7 x 30.6 cm (sheet)

The State Hermitage Museum, St Petersburg (Inv. no. OP-5538)

Prov.: Acquired between 1773 and 1797



Diego VELÁZQUEZ

Spanish 1599–1660

Luncheon (c. 1617–18)

oil on canvas

108.5 x 102.0 cm

The State Hermitage Museum, St Petersburg (Inv. no. ГЭ-389)

Prov.: Acquired 1763–74



Georg Friedrich (Yury) VELTEN

Russian 1730–1801

Design for a small Chinese summer-house (c. 1766)

pen and ink

37.5 x 53.0 cm (sheet)

The State Hermitage Museum, St Petersburg (Inv. no. OP-8754)

Prov.: Acquired before 1797



Georg Friedrich (Yury) VELTEN

Russian 1730–1801

Design for an open Chinese summer-house (c. 1766)

pen and ink

37.0 x 53.5 cm (image)

The State Hermitage Museum, St Petersburg (Inv. no. OP-8752)

Prov.: Acquired before 1797



Georg Friedrich (Yury) VELTEN

Russian 1730–1801

Façade of the Chesma Palace (c. 1774)

pen and ink, grey wash

47.6 x 68.4 cm (sheet)

The State Hermitage Museum, St Petersburg (Inv. no. OP-45151)

Prov.: Acquired before 1797



Georg Friedrich (Yury) VELTEN

Russian 1730–1801

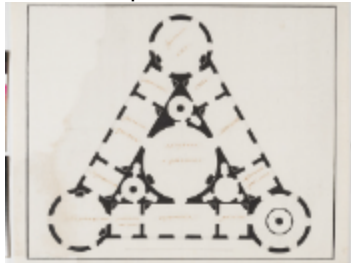
Plan of the Chesma Palace (c. 1774)

pen and ink

53.6 x 66.8 cm (sheet)

The State Hermitage Museum, St Petersburg (Inv. no. OP-45149)

Prov.: Acquired before 1797



Georg Friedrich (Yury) VELTEN

Russian 1730–1801

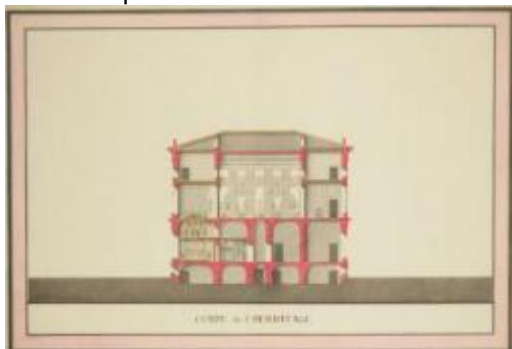
Cross-section of the north pavilion of the Small Hermitage (1770s)

pen and ink, watercolour

49.8 x 70.8 cm (sheet)

The State Hermitage Museum, St Petersburg (Inv. no. OP-48752)

Prov.: Acquired in 2010



Georg Friedrich (Yury) VELTEN

Russian 1730–1801

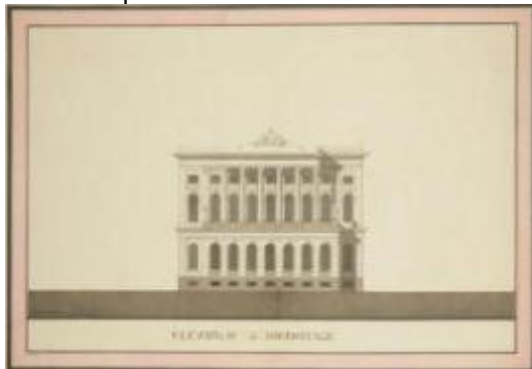
Main Façade of the north pavilion of the Small Hermitage (1770s)

pen and ink, watercolour

49.6 x 70.8 cm (sheet)

The State Hermitage Museum, St Petersburg (Inv. no. OP-48751)

Prov.: Acquired in 2010



Claude Joseph VERNET

French 1714–89

Storm (The gust of wind) (c. 1753)

oil on canvas

68.0 x 84.5 cm

The State Hermitage Museum, St Petersburg (Inv. no. ГЭ-1772)

Prov.: Acquired from the collection of the Comte de Baudouin, Paris, 1781



Elizabeth Louise VIGÉE LE BRUN

French 1755–1842

Portrait of Count Grigory Ivanovich Chernyshov holding a mask 1793

oil on canvas

56.0 x 44.0 cm

The State Hermitage Museum, St Petersburg (Inv. no. ГЭ-7459)

Prov.: Acquired, the State Museum Fund, 1923



Jean Louis VOILLE

French 1744–1804

Portrait of Olga Zherebtsova (1790s)

oil on canvas

73.5 x 58.0 cm

The State Hermitage Museum, St Petersburg (Inv. no. ГЭ-5654)

Prov.: Acquired from the collection of E. P. Oliv, Petrograd, 1923



Giovanni VOLPATO
Italian 1740–1803
Grotesques with allegories of Day and Night (c. 1770)
hand coloured engraving
115.5 x 49.8 cm (image)
The State Hermitage Museum, St Petersburg (Inv. no. OF-122757)
Prov.: Acquired before 1820



Giovanni VOLPATO
Italian 1740–1803
Grotesques with birds (c. 1770)
hand coloured engraving
103.5 x 50.0 cm (image)
The State Hermitage Museum, St Petersburg (Inv. no. OF-122740)
Prov.: Acquired before 1820



Giovanni VOLPATO
Italian 1740–1803
Pietro CAMPORESI (after)
The Raphael Loggia in the Vatican (c. 1770)
hand coloured engraving
63.0 x 42.5 cm (image)
The State Hermitage Museum, St Petersburg (Inv. no. OF-122691)
Prov.: Acquired before 1820



Joachim von SANDRART
German 1606–88
Allegory of vanity (c. 1642)
oil on canvas
125.0 x 110.0 cm
The State Hermitage Museum, St Petersburg (Inv. no. ГЭ-776)
Prov.: Acquired 1763–74



Simon VOUET
French 1590–1649
Study of a standing male figure 1640
black and white chalk on grey paper
35.2 x 23.9 cm (sheet)
The State Hermitage Museum, St Petersburg (Inv. no. OP-6402)
Prov.: Acquired from the collection of Count von Bruhl, Dresden, 1769



Antoine WATTEAU
French 1684–1721
Savoyard with a Marmot 1716
oil on canvas
40.5 x 32.5 cm
The State Hermitage Museum, St Petersburg (Inv. no. ГЭ-1148)
Prov.: Acquired from the collection of Audran, Paris, 1774



John WOOTTON
English (c. 1682)–1764
Hounds and a magpie (c. 1716)
oil on canvas
152.0 x 128.0 cm
The State Hermitage Museum, St Petersburg (Inv. no. ГЭ-9781)
Prov.: Acquired from the collection of Sir Robert Walpole, Houghton Hall, 1779



Philips WOUWERMAN
Dutch 1619–68
The deer hunt (c. 1660)
oil on canvas
100.0 x 80.0 cm
The State Hermitage Museum, St Petersburg (Inv. no. ГЭ-1055)
Prov.: Acquired from the collection of the Duke de Choiseul, Paris, 1772



Joseph WRIGHT of Derby

English 1734–97

An iron forge viewed from without 1773

oil on canvas

105.0 x 140.0 cm

The State Hermitage Museum, St Petersburg (Inv. no. ГЭ-3149)

Prov.: Acquired from the artist, 1775



Section 2
Cameos and Intaglio

MWM 2015 – EXHIBITION CHECKLIST DRAFT 22 MAY 2015
Cameos and intaglios

ENGLAND (manufacturer)
Edward BURCH (engraver)
England (1730)–1814
Sacrifice to Minerva, cameo 1769
chalceony, gold
2.5 x 2.2 cm
The State Hermitage Museum, St Petersburg (Inv. no. И 3956)
Prov.: Acquired before 1794



ENGLAND (manufacturer)
William BROWN (engraver)
England 1748–1825
Charles BROWN (engraver)
England active (1749–95)
Catherine the Great crowning Prince Potemkin with laurels, cameo 1790–92
sardonyx, gold, glass
5.7 x 6.6 cm
The State Hermitage Museum, St Petersburg (Inv. no. K 1125)
Prov.: Acquired August 1792



FRANCE (manufacturer)
Jean-Baptiste Nicolas GLACHANT the younger (engraver)
France 1746–1815
Bacchus and Cupid, cameo (mid – late 18th century)
sardonyx, gold
4.6 x 3.8 cm
The State Hermitage Museum, St Petersburg (Inv. no. K 1794)
Prov.: Acquired from the collection of d'Ennery, Paris in 1786



GERMANY (manufacturer)
Gottfried Benjamin TETTELBACH (engraver)
Germany 1750–1813
Hercules and Iole, cameo (late 1780s)
jasper, gold
4.2 x 3.4 cm
The State Hermitage Museum, St Petersburg (Inv. no. K 1839)
Prov.: Acquired before 1794



ITALY (manufacturer)
Lorenz NATTER (engraver)
Germany 1705–63
Portrait of Philipp von Stosch, intaglio 1739
emerald, gold
2.6 x 2.2 cm
The State Hermitage Museum, St Petersburg (Inv. no. И 3631)
Prov.: Acquired 1764



ITALY (manufacturer)
Valerio BELLI (engraver)
Italy (c. 1468)–1546
Scene of sacrifice, intaglio (early – mid 16th century)
rock crystal, gold
4.1 x 3.2 cm
The State Hermitage Museum, St Petersburg (Inv. no. И 4064)
Prov.: Acquired from the collection of Saint-Moryce, Paris in 1792



ITALY (manufacturer)
Alessandro CESATI (engraver)
Italy active (1532–64)
Henri II of France, cameo (mid 16th century)
cornelian, gold
4.2 x 3.5 cm
The State Hermitage Museum, St Petersburg (Inv. no. K 826)
Prov.: Acquired from the collection of Dukes of Orléans, Paris in 1787



ITALY, Florence (manufacturer)
Louis SIRIÈS (attributed to) (engraver)
France (c. 1686– after 1766)
Flora, cameo (1740s)
sardonyx, gold
3.6 x 2.3 cm
The State Hermitage Museum, St Petersburg (Inv. no. K 1873)
Prov.: Acquired before 1794



ITALY, Rome (manufacturer)
Giovanni PICHLER (engraver)
Italian 1734–91
Portrait of Grand Duke Paul Petrovich, cameo 1782
agate, diamonds, gold, silver
2.3 x 1.8 cm
The State Hermitage Museum, St Petersburg (Inv. no. K 6237)
Prov.: Acquired late 1780s – early 1790s



ITALY, Rome (manufacturer)
Giovanni PICHLER (engraver)
Italy 1734–91
Portrait of Grand Duchess Maria Fyodorovna, cameo 1782
agate, diamonds, gold, silver
2.4 x 1.9 cm
The State Hermitage Museum, St Petersburg (Inv. no. K 6238)
Prov.: Acquired late 1780s – early 1790s



JAMES ROACH, London (attributed to) (cabinet maker)
England active (1783–90)
Cabinet for casts of engraved gems 1783–88
Oak, Fir, Pine, Satinwood, Maple, Ebony, Rosewood, white paste medallions, engraved marquetry veneer and gilded bronze
128.0 x 117.0 x 41.0 cm
The State Hermitage Museum, St Petersburg (Inv. no. Эрп 342)



JAMES TASSIE, London (workshop of)
England 1735–99
Alexander the Great putting Homer's Iliad in a casket (1780s)
coloured glass, gilded paper
4.0 x 4.7 cm
The State Hermitage Museum, St Petersburg (Inv. no. R-T, 3663 a)
Prov.: Purchased from James Tassie 1783–88



JAMES TASSIE, London (workshop of)
England 1735–99
Alexander the Great putting Homer's Iliad in a casket (1780s)
white glass, gilded paper
4.0 x 4.8 cm
The State Hermitage Museum, St Petersburg (Inv. no. R-T, 3663 b)
Prov.: Purchased from James Tassie 1783–88



JAMES TASSIE, London (workshop of)
England 1735–99

Bust of Athena (1780s)
coloured glass, gilded paper
4.6 x 3.8 cm

The State Hermitage Museum, St Petersburg (Inv. no. R-T, 462 a)
Prov.: Purchased from James Tassie 1783–88



JAMES TASSIE, London (workshop of)
England 1735–99

Bust of Athena (1780s)
white glass, gilded paper
4.4 x 3.5 cm

The State Hermitage Museum, St Petersburg (Inv. no. R-T, 462 b)
Prov.: Purchased from James Tassie 1783–88



JAMES TASSIE, London (workshop of)
England 1735–99

Bust of Didius Julianus (?) (1780s)
coloured glass, gilded paper
4.8 x 4.2 cm

The State Hermitage Museum, St Petersburg (Inv. no. R-T, 12103 a)
Prov.: Purchased from James Tassie 1783–88



JAMES TASSIE, London (workshop of)
England 1735–99

Bust of Didius Julianus (?) (1780s)

white glass, gilded paper

4.8 x 4.1 cm

The State Hermitage Museum, St Petersburg (Inv. no. R-T, 12103 6)

Prov.: Purchased from James Tassie 1783–88



JAMES TASSIE, London (workshop of)
England 1735–99

Bust of Livia (1780s)

coloured glass, gilded paper

4.7 x 4.0 cm

The State Hermitage Museum, St Petersburg (Inv. no. R-T, 8130 a)

Prov.: Purchased from James Tassie 1783–88



JAMES TASSIE, London (workshop of)
England 1735–99

Drunken Bacchus (1780s)

coloured glass, gilded paper

4.8 x 4.1 cm

The State Hermitage Museum, St Petersburg (Inv. no. R-T, 13410 a)

Prov.: Purchased from James Tassie 1783–88



JAMES TASSIE, London (workshop of)
England 1735–99

Drunken Bacchus (1780s)
white glass, gilded paper

4.6 x 3.8 cm

The State Hermitage Museum, St Petersburg (Inv. no. R-T, 13410 6)
Prov.: Purchased from James Tassie 1783–88



JAMES TASSIE, London (workshop of)
England 1735–99

Falcon seated on a solar disk (1780s)
coloured glass, gilded paper

3.9 x 3.4 cm

The State Hermitage Museum, St Petersburg (Inv. no. R-T, 7 a)
Prov.: Purchased from James Tassie 1783–88



JAMES TASSIE, London (workshop of)
England 1735–99

Falcon seated on a solar disk (1780s)
white glass, gilded paper

3.9 x 3.4 cm

The State Hermitage Museum, St Petersburg (Inv. no. R-T, 7 6)
Prov.: Purchased from James Tassie 1783–88



JAMES TASSIE, London (workshop of)
England 1735–99

The feat of Marcus Curtius (1780s)

coloured glass, gilded paper

3.7 x 4.6 cm

The State Hermitage Museum, St Petersburg (Inv. no. R-T, 4097 a)

Prov.: Purchased from James Tassie 1783–88



JAMES TASSIE, London (workshop of)
England 1735–99

The feat of Marcus Curtius (1780s)

white glass, gilded paper

3.7 x 4.5 cm

The State Hermitage Museum, St Petersburg (Inv. no. R-T, 4097 b)

Prov.: Purchased from James Tassie 1783–88



JAMES TASSIE, London (workshop of)
England 1735–99

Flora with a basket of flowers on her head (1780s)

coloured glass, gilded paper

4.1 x 3.1 cm

The State Hermitage Museum, St Petersburg (Inv. no. R-T, 609 a)

Prov.: Purchased from James Tassie 1783–88



JAMES TASSIE, London (workshop of)
England 1735–99
Flora with a basket of flowers on her head (1780s)
white glass, gilded paper
4.4 x 3.1 cm
The State Hermitage Museum, St Petersburg (Inv. no. R-T, 609 6)
Prov.: Purchased from James Tassie 1783–88



JAMES TASSIE, London (workshop of)
England 1735–99
Head of Jupiter (1780s)
coloured glass, gilded paper
3.7 x 3.3 cm
The State Hermitage Museum, St Petersburg (Inv. no. R-T, 239 a)
Prov.: Purchased from James Tassie 1783–88



JAMES TASSIE, London (workshop of)
England 1735–99
Head of Jupiter (1780s)
coloured glass, gilded paper
3.6 x 3.2 cm
The State Hermitage Museum, St Petersburg (Inv. no. R-T, 239 6)
Prov.: Purchased from James Tassie 1783–88



JAMES TASSIE, London (workshop of)
England 1735–99

Head of Medusa (1780s)

coloured glass, gilded paper

7.6 x 9.2 cm

The State Hermitage Museum, St Petersburg (Inv. no. R-T, 3296 a)

Prov.: Purchased from James Tassie 1783–88



JAMES TASSIE, London (workshop of)
England 1735–99

Neptune in a chariot drawn by hippocampi (1780s)

coloured glass, gilded paper

5.0 x 4.1 cm

The State Hermitage Museum, St Petersburg (Inv. no. R-T, 817 a)

Prov.: Purchased from James Tassie 1783–88



JAMES TASSIE, London (workshop of)
England 1735–99

Neptune in a chariot drawn by hippocampi (1780s)

white glass, gilded paper

4.9 x 3.9 cm

The State Hermitage Museum, St Petersburg (Inv. no. R-T, 817 b)

Prov.: Purchased from James Tassie 1783–88



JAMES TASSIE, London (workshop of)
England 1735–99
Venus with an eagle (1780s)
coloured glass, gilded paper
3.6 x 2.9 cm
The State Hermitage Museum, St Petersburg (Inv. no. R-T, 358 a)
Prov.: Purchased from James Tassie 1783–88



JAMES TASSIE, London (workshop of)
England 1735–99
Venus with an eagle (1780s)
white glass, gilded paper
3.7 x 3.1 cm
The State Hermitage Museum, St Petersburg (Inv. no. R-T, 358 b)
Prov.: Purchased from James Tassie 1783–88



JAMES TASSIE, London (workshop of)
England 1735–99
Marriage of Cupid and Psyche (1780s)
coloured glass, gilded paper
3.9 x 4.5 cm
The State Hermitage Museum, St Petersburg (Inv. no. R-T, 11128 a)
Prov.: Purchased from James Tassie 1783–88



JAMES TASSIE, London (workshop of)
England 1735–99

Marriage of Cupid and Psyche (1780s)
white glass, gilded paper

3.6 x 4.3 cm

The State Hermitage Museum, St Petersburg (Inv. no. R-T, 11128 6)
Prov.: Purchased from James Tassie 1783–88



RUSSIA (manufacturer)
Carl LEBERECHT (engraver)
Germany 1755–1827

Portrait of Alexander Lanskoj, cameo 1785

jasper, gold

4.1 x 3.5 cm

The State Hermitage Museum, St Petersburg (Inv. no. K 1807)
Prov.: Acquired 1785



RUSSIA (manufacturer)
George-Heinrich KÖNIG (engraver)
(1756– after 1824)

Portrait of Prince Grigory Potemkin, cameo 1788

gold, marble

7.2 x 5.8 cm

The State Hermitage Museum, St Petersburg (Inv. no. K 5446)
Prov.: Acquired 1789



RUSSIA (manufacturer)
Grand Duchess Maria Fyodorovna (engraver)
Russia 1795–1828
An altar, intaglio 1788
cornelian, gold
3.7 x 2.5 cm
The State Hermitage Museum, St Petersburg (Inv. no. И 3642)
Prov.: Acquired late 1780s – early 1790s



RUSSIA (manufacturer)
Heinrich GAMBS (role)
Germany 1765–1831
Christian MEYER (role)
Germany active 1787–98
Cabinet for engraved gems 1788–89
Mahogany, Oak, gilt-bronze, brass, veneer
190.0 x 67.0 x 40.0 cm
The State Hermitage Museum, St Petersburg (Inv. no. Эрп 155)



RUSSIA (manufacturer)
Grand Duchess Maria Fyodorovna (engraver)
Russia 1795–1828
Catherine the Great as Minerva, cameo 1789
jasper, gold
6.5 x 4.7 cm
The State Hermitage Museum, St Petersburg (Inv. no. K 1077)
Prov.: Acquired 1789



RUSSIA (manufacturer)
Carl LEBERECHT (engraver)
Germany 1755–1827
Allegory of Peace, intaglio 1790
chalcedony, gold
5.4 x 2.8 cm
The State Hermitage Museum, St Petersburg (Inv. no. И 3644)
Prov.: Acquired before 1794



Section 3 Porcelain and Silverware

SÈVRES PORCELAIN FACTORY, Sèvres (manufacturer)

France est. 1756

Set of six cups, saucers and plates from the Cameo Service 1778–79

porcelain (soft-paste), gilt

7.0 x 6.8 cm diameter (each) (cup)

3.5 x 13.5 cm diameter (each) (saucer)

2.7 x 26.0 cm diameter (each) (plate)

The State Hermitage Museum, St Petersburg (Inv. no. ГЧ-450, ГЧ-451, ГЧ-452, ГЧ-453, ГЧ-454, ГЧ-455, ГЧ-386, ГЧ-387, ГЧ-388, ГЧ-389, ГЧ-391, ГЧ-392, ГЧ-21, ГЧ-22, ГЧ-24, ГЧ-26, ГЧ-27, ГЧ-28)

Prov.: commissioned by Catherine II as a gift for Prince Grigory Potemkin in 1777; Potemkin's Taurida Palace, St Petersburg from 1779; transferred to the Hofmarshal's Office of the Winter Palace after his death; 1922 transferred to the State Hermitage Museum



SÈVRES PORCELAIN FACTORY, Sèvres (manufacturer)

France est. 1756

Pair of square compotiers from the Cameo Service 1778–79

porcelain (soft-paste), gilt

4.3 x 20.5 x 20.5 cm (each)

The State Hermitage Museum, St Petersburg (Inv. no. ГЧ-363, ГЧ-364)

Prov.: commissioned by Catherine II as a gift for Prince Grigory Potemkin in 1777; Potemkin's Taurida Palace, St Petersburg from 1779; transferred to the Hofmarshal's Office of the Winter Palace after his death; 1922 transferred to the State Hermitage Museum



SÈVRES PORCELAIN FACTORY, Sèvres (manufacturer)

France est. 1756

Pair of round compotiers from the Cameo Service 1778–79

porcelain (soft-paste), gilt

4.3 x 20.5 cm diameter (each)

The State Hermitage Museum, St Petersburg (Inv. no. ГЧ-366, ГЧ-368)

Prov.: commissioned by Catherine II as a gift for Prince Grigory Potemkin in 1777; Potemkin's Taurida Palace, St Petersburg from 1779; transferred to the Hofmarshal's Office of the Winter Palace after his death; 1922 transferred to the State Hermitage Museum



SÈVRES PORCELAIN FACTORY, Sèvres (manufacturer)

France est. 1756

Pair of rhomboid compotiers from the Cameo Service 1778–79

porcelain (soft-paste), gilt

4.3 x 20.5 cm (each)

The State Hermitage Museum, St Petersburg (Inv. no. ГЧ-374, ГЧ-375)

Prov.: commissioned by Catherine II as a gift for Prince Grigory Potemkin in 1777; Potemkin's Taurida Palace, St Petersburg from 1779; transferred to the Hofmarshal's Office of the Winter Palace after his death; 1922 transferred to the State Hermitage Museum



SÈVRES PORCELAIN FACTORY, Sèvres (manufacturer)

France est. 1756

Ice-cream cooler with lid and liner from the Cameo Service 1778–79

porcelain (soft-paste), gilt

(a) 16.6 x 19.0 cm diameter (cooler)

(b) 11.0 x 18.6 cm diameter (lid)

(c) 8.0 x 20.0 cm diameter (liner)

The State Hermitage Museum, St Petersburg (Inv. no. ГЧ-625.a-c)

Prov.: commissioned by Catherine II as a gift for Prince Grigory Potemkin in 1777; Potemkin's Taurida Palace, St Petersburg from 1779; transferred to the Hofmarshal's Office of the Winter Palace after his death; 1922 transferred to the State Hermitage Museum



SÈVRES PORCELAIN FACTORY, Sèvres (manufacturer)

France est. 1756

Set of seven ice-cream cups and stand from the Cameo Service 1778–79

porcelain (soft-paste), gilt

5.3 x 22.0 x 15.8 cm (stand)

8.5 x 6.3 cm diameter (each) (cup)

The State Hermitage Museum, St Petersburg (Inv. no. ГЧ-645, ГЧ-501, ГЧ-502, ГЧ-512, ГЧ-524, ГЧ-539, ГЧ-541, ГЧ-542)

Prov.: commissioned by Catherine II as a gift for Prince Grigory Potemkin in 1777; Potemkin's Taurida Palace, St Petersburg from 1779; transferred to the Hofmarshal's Office of the Winter Palace after his death; 1922 transferred to the State Hermitage Museum



SÈVRES PORCELAIN FACTORY, Sèvres (manufacturer)

France est. 1756

Set of four ice-cream cups and stand from the Cameo Service 1778–79

porcelain (soft-paste), gilt

5.3 x 22.0 x 15.8 cm (stand)

8.5 x 6.3 cm diameter (each) (cup)

The State Hermitage Museum, St Petersburg (Inv. no. ГЧ-660, ГЧ-543, ГЧ-544, ГЧ-546, ГЧ-551)

Prov.: commissioned by Catherine II as a gift for Prince Grigory Potemkin in 1777; Potemkin's Taurida Palace, St Petersburg from 1779; transferred to the Hofmarshal's Office of the Winter Palace after his death; 1922 transferred to the State Hermitage Museum



SÈVRES PORCELAIN FACTORY, Sèvres (manufacturer)

France est. 1756

Pair of wineglass-coolers from the Cameo Service 1778–79

porcelain (soft-paste), gilt

12.5 x 29.0 x 16.5 cm (each)

The State Hermitage Museum, St Petersburg (Inv. no. ГЧ-604, ГЧ-605)

Prov.: commissioned by Catherine II as a gift for Prince Grigory Potemkin in 1777; Potemkin's Taurida Palace, St Petersburg from 1779; transferred to the Hofmarshal's Office of the Winter Palace after his death; 1922 transferred to the State Hermitage Museum



SÈVRES PORCELAIN FACTORY, Sèvres (manufacturer)

France est. 1756

Bottle-cooler from the Cameo Service 1778–79

porcelain (soft-paste), gilt

19.6 x 18.0 cm

The State Hermitage Museum, St Petersburg (Inv. no. ГЧ-621)

Prov.: commissioned by Catherine II as a gift for Prince Grigory Potemkin in 1777; Potemkin's Taurida Palace, St Petersburg from 1779; transferred to the Hofmarshal's Office of the Winter Palace after his death; 1922 transferred to the State Hermitage Museum



SÈVRES PORCELAIN FACTORY, Sèvres (manufacturer)

France est. 1756

Pair of slop bowls from the Cameo Service 1778–79

porcelain (soft-paste), gilt

9.0 x 18.3 cm diameter (each)

The State Hermitage Museum, St Petersburg (Inv. no. ГЧ-635, ГЧ-636)

Prov.: commissioned by Catherine II as a gift for Prince Grigory Potemkin in 1777; Potemkin's Taurida Palace, St Petersburg from 1779; transferred to the Hofmarshal's Office of the Winter Palace after his death; 1922 transferred to the State Hermitage Museum



SÈVRES PORCELAIN FACTORY, Sèvres (manufacturer)

France est. 1756

Pair of liqueur-bottle-coolers from the Cameo Service 1778–79

porcelain (soft-paste), gilt

28.0 x 26.5 x 16.6 cm (each)

The State Hermitage Museum, St Petersburg (Inv. no. ГЧ-639, 643)

Prov.: commissioned by Catherine II as a gift for Prince Grigory Potemkin in 1777; Potemkin's Taurida Palace, St Petersburg from 1779; transferred to the Hofmarshal's Office of the Winter Palace after his death; 1922 transferred to the State Hermitage Museum



SÈVRES PORCELAIN FACTORY, Sèvres (manufacturer)

France est. 1756

Pair of butter dishes with lids from the Cameo Service 1778–79

porcelain (soft-paste), gilt

(a) 7.6 x 21.7 cm diameter (each) (dish)

(b) 5.0 x 11.4 cm diameter (each) (lid)

The State Hermitage Museum, St Petersburg (Inv. no.ГЧ-666.a-b, ГЧ -669, a-b)

Prov.: commissioned by Catherine II as a gift for Prince Grigory Potemkin in 1777; Potemkin's Taurida Palace, St Petersburg from 1779; transferred to the Hofmarshal's Office of the Winter Palace after his death; 1922 transferred to the State Hermitage Museum



SÈVRES PORCELAIN FACTORY, Sèvres (manufacturer)

France est. 1756

Pair of milk jugs from the Cameo Service 1778–79

porcelain (soft-paste), gilt

16.0 x 15.2 cm (each)

The State Hermitage Museum, St Petersburg (Inv. no. ГЧ-672, ГЧ-675)

Prov.: commissioned by Catherine II as a gift for Prince Grigory Potemkin in 1777; Potemkin's Taurida Palace, St Petersburg from 1779; transferred to the Hofmarshal's Office of the Winter Palace after his death; 1922 transferred to the State Hermitage Museum



SÈVRES PORCELAIN FACTORY, Sèvres (manufacturer)

France est. 1756

Pair of coffee pots with lids from the Cameo Service 1778–79

porcelain (soft-paste), gilt

15.0 x 19.9 (each) (pot)

3.2 x 6.8 cm diameter (each) (lid)

The State Hermitage Museum, St Petersburg (Inv. no.ГЧ-678.a-b, ГЧ-679. a-b)

Prov.: commissioned by Catherine II as a gift for Prince Grigory Potemkin in 1777; Potemkin's Taurida Palace, St Petersburg from 1779; transferred to the Hofmarshal's Office of the Winter Palace after his death; 1922 transferred to the State Hermitage Museum



SÈVRES PORCELAIN FACTORY, Sèvres (manufacturer)

France est. 1756

Pair of oval sugar bowls with lids from the Cameo Service 1778–79

porcelain (soft-paste), gilt

7.8 x 19.7 x 10.4 cm (each) (bowl)

7.8 x 17.4 x 10.5 (each) (lid)

The State Hermitage Museum, St Petersburg (Inv. no.ГЧ-685.a-b ГЧ-687. a-b)

Prov.: commissioned by Catherine II as a gift for Prince Grigory Potemkin in 1777; Potemkin's Taurida Palace, St Petersburg from 1779; transferred to the Hofmarshal's Office of the Winter Palace after his death; 1922 transferred to the State Hermitage Museum



SÈVRES PORCELAIN FACTORY, Sèvres (manufacturer)

France est. 1756

Pair of sugar bowl stands from the Cameo Service 1778–79

porcelain (soft-paste), gilt

2.3 x 27.7 x 17.0 cm (each)

The State Hermitage Museum, St Petersburg (Inv. no. ГЧ-382, ГЧ-383)

Prov.: commissioned by Catherine II as a gift for Prince Grigory Potemkin in 1777; Potemkin's Taurida Palace, St Petersburg from 1779; transferred to the Hofmarshal's Office of the Winter Palace after his death; 1922 transferred to the State Hermitage Museum



SÈVRES PORCELAIN FACTORY, Sèvres (manufacturer)

France est. 1756

Set of two sweet cups with lids and stand from the Cameo Service 1778–79

porcelain (soft-paste), gilt

(a) 12.5 x 20.5 x 15.5 cm (stand)

(b-c) 3.4 x 7.3 cm diameter (each) (cups)

The State Hermitage Museum, St Petersburg (Inv. no.ГЧ-695.a-c)

Prov.: commissioned by Catherine II as a gift for Prince Grigory Potemkin in 1777; Potemkin's Taurida Palace, St Petersburg from 1779; transferred to the Hofmarshal's Office of the Winter Palace after his death; 1922 transferred to the State Hermitage Museum



SÈVRES PORCELAIN FACTORY, Sèvres (manufacturer)

France est. 1756

Set of two sweet cups with lids and stand from the Cameo Service 1778–79

porcelain (soft-paste), gilt

(a) 12.5 x 20.5 x 15.5 cm (stand)

(b-c) 3.4 x 7.3 cm diameter (each) (cup)

The State Hermitage Museum, St Petersburg (Inv. no. ГЧ-699.a-c)

Prov.: commissioned by Catherine II as a gift for Prince Grigory Potemkin in 1777; Potemkin's Taurida Palace, St Petersburg from 1779; transferred to the Hofmarshal's Office of the Winter Palace after his death; 1922 transferred to the State Hermitage Museum



SÈVRES PORCELAIN FACTORY, Sèvres (manufacturer)

France est. 1756

Set of three sweet cups with lids and stand from the Cameo Service 1778–79

porcelain (soft-paste), gilt

(a) 12.0 x 21.5 cm diameter (stand)

(b-d) 3.4 x 7.3 cm diameter (each) (cup)

The State Hermitage Museum, St Petersburg (Inv. no. ГЧ-702.a-d)

Prov.: commissioned by Catherine II as a gift for Prince Grigory Potemkin in 1777; Potemkin's Taurida Palace, St Petersburg from 1779; transferred to the Hofmarshal's Office of the Winter Palace after his death; 1922 transferred to the State Hermitage Museum



SÈVRES PORCELAIN FACTORY, Sèvres (manufacturer)

France est. 1756

Set of three sweet cups with lids and stand from the Cameo Service 1778–79

porcelain (soft-paste), gilt

(a) 12.0 x 21.5 cm diameter (stand)

(b-d) 3.4 x 7.3 cm diameter (each) (cup)

The State Hermitage Museum, St Petersburg (Inv. no. ГЧ-705.a-d)

Prov.: commissioned by Catherine II as a gift for Prince Grigory Potemkin in 1777; Potemkin's Taurida Palace, St Petersburg from 1779; transferred to the Hofmarshal's Office of the Winter Palace after his death; 1922 transferred to the State Hermitage Museum



SÈVRES PORCELAIN FACTORY, Sèvres (manufacturer)

France est. 1756

Louis-Simon BOIZOT (designer and modeller)

France 1743–1809

Achilles and the Daughters of Lycomedes, figure group from the Cameo Service 1778–79

porcelain (biscuit)

28.5 x 34.6 x 24.5 cm

The State Hermitage Museum, St Petersburg (Inv. no. ГЧ-7197)



SÈVRES PORCELAIN FACTORY, Sèvres (manufacturer)

France est. 1756

Louis-Simon BOIZOT (designer and modeller)

France 1743–1809

Telemachus and Calypso, figure group from the Cameo Service 1778–79

porcelain (biscuit)

32.0 x 36.0 x 27.5 cm

The State Hermitage Museum, St Petersburg (Inv. no. ГЧ-7203)



CLAUDE AUGUSTE AUBRY, Paris (manufacturer)

France active (1778–79)

Set of six dessert forks for the Cameo Service 1778–79

silver-gilt

2.5 x 18.0 cm (each)

The State Hermitage Museum, St Petersburg (Inv. no. Э-8173, Э-8174, Э-8176, Э-8182, Э-8184, Э-8186)

Prov.: Potemkin's Taurida Palace, St Petersburg from 1779; transferred to the Hofmarshal's Office of the Winter Palace after his death; 1922 transferred to the State Hermitage Museum



CLAUDE AUGUSTE AUBRY, Paris (manufacturer)

France active (1778–79)

Set of six ice-cream scoops for the Cameo Service 1778–79

silver-gilt

3.0 x 15.0 cm (each)

The State Hermitage Museum, St Petersburg (Inv. no. Э-8497, Э-8498, Э-8499, Э-8500, Э-8501, Э-8503)
Prov.: Potemkin's Taurida Palace, St Petersburg from 1779; transferred to the Hofmarshal's Office of the Winter Palace after his death; 1922 transferred to the State Hermitage Museum



CLAUDE AUGUSTE AUBRY, Paris (manufacturer)

France active (1778–79)

Set of twelve dessert knives for the Cameo Service 1778–79

silver-gilt, steel, gilt-steel

1.5 x 20.5 cm (each)

The State Hermitage Museum, St Petersburg (Inv. no. Э-8267, Э-8268, Э-8269, Э-8270, Э-8271, Э-8272, Э-8379, Э-8380, Э-8381, Э-8382, Э-8383, Э-8384)

Prov.: Potemkin's Taurida Palace, St Petersburg from 1779; transferred to the Hofmarshal's Office of the Winter Palace after his death; 1922 transferred to the State Hermitage Museum



CLAUDE AUGUSTE AUBRY, Paris (manufacturer)

France active (1778–79)

Set of six dessert spoons for the Cameo Service 1778–79

silver-gilt

4.0 x 19.0 cm (each)

The State Hermitage Museum, St Petersburg (Inv. no. Э-8113, Э-8114, Э-8115, Э-8116, Э-8117, Э-8118)

Prov.: Potemkin's Taurida Palace, St Petersburg from 1779; transferred to the Hofmarshal's Office of the Winter Palace after his death; 1922 transferred to the State Hermitage Museum



CLAUDE AUGUSTE AUBRY, Paris (manufacturer)

France active (1778–79)

Set of six teaspoons for the Cameo Service 1778–79

silver-gilt

3.0 x 14.5 cm (each)

The State Hermitage Museum, St Petersburg (Inv. no. Э-8456, Э-8470, Э-8475, Э-8476, Э-8477, Э-8478)

Prov.: Potemkin's Taurida Palace, St Petersburg from 1779; transferred to the Hofmarshal's Office of the Winter Palace after his death; 1922 transferred to the State Hermitage Museum



Louis-Joseph LENHENDRICK (goldsmith)
France active (1769–1783)
Tureen on stand with lid and liner 1769–70
silver, gilt-silver

(a) 30.5 x 58.9 x 48.0 cm (tureen and stand)

(b) 20.0 x 32.0 x 24.4 cm (lid)

(c) 8.5 x 31.0 x 23.3 cm (liner)

(a-c) 37.0 x 58.9 x 48.0 (overall)

The State Hermitage Museum, St Petersburg (Inv. no. Э 7301 a-c)

Prov.: belonged to Prince Grigory Orlov 1770s; in the Hofmarshal's Office of the Winter Palace from 1784;
1922 transferred to the State Hermitage Museum



Jacques-Nicolas ROETTIERS (goldsmith)
France 1707–84

Pair of candelabra 1770–71

silver

31.0 x 23.0 x 23.0 cm

The State Hermitage Museum, St Petersburg (Inv. no. Э-7246, "-7247)

Prov.: belonged to Prince Grigory Orlov 1770s; in the Hofmarshal's Office of the Winter Palace from 1784;
1922 transferred to the State Hermitage Museum



Section 4
Chinese metalwork

CHINESE

Vessel with two handles in the form of dragons and stand (early 18th century)

silver, enamel, silver-gilt, wood

28.5 x 15.0 cm diameter (vessel)

15.0 cm diameter (stand)

The State Hermitage Museum, St Petersburg (Inv. no. ЛС-102, ВБс-227, 3К)

Prov.: Acquired before 1789



CHINESE

Incense burner (17th century)

silver, silver-gilt

15.0 x 14.3 x 11.4 cm

The State Hermitage Museum, St Petersburg (Inv. no. ЛС-88, ВБс -1133)

Prov.: Acquired before 1789



CHINESE

Pair of caskets with lids (late 17th – early 18th century)

silver

9.0 x 15.0 cm diameter (each)

The State Hermitage Museum, St Petersburg (Inv. no. ЛС-6 а, б, ВБс -1089, ЛС-7 а, б, ВБс -1090)

Prov.: Acquired before 1789



CHINESE

Toilet mirror (1740s –50s)

silver, diamonds, baroque pearls, wood, silver-gilt

57.0 x 29.0 x 14.0 cm

The State Hermitage Museum, St Petersburg (Inv. no. ЛС-578, ВБс-2773)

Prov.: Acquired before 1789



CHINESE

Toilet mirror (early 18th century)

glass, mercury amalgam, paper, silver, filigree, parcel-gilt, wood, velvet, peacock and king-fisher feathers, mother-of-pearl, crystals

88.7 x 54.8 x 28.0 cm

The State Hermitage Museum, St Petersburg (Inv. no. ЛС-472/ 1,2, ВБс-373)

Prov.: Acquired before 1789



CHINESE

Pair of egg-shaped boxes with a lids on a stands (late 17th – early 18th century)

silver, silver-gilt

6.3 x 4.0 cm diameter (each)

The State Hermitage Museum, St Petersburg (Inv. no. ЛС-595 а,б, в, ВБс-2944, ЛС-596 а,б, в, ВБс-2945)

Prov.: Acquired before 1789



CHINESE

Rose-water sprinkler and stopper (1740s –50s)

silver, enamel, silver-gilt

29.5 x 10.0 cm diameter

The State Hermitage Museum, St Petersburg (Inv. no. ЛС-105 а,б, ВВс-229)

Prov.: Acquired before 1789



CHINESE

Rose-water sprinkler and stopper (1740s –50s)

silver, enamel, silver-gilt

29.5 x 10.0 cm diameter

The State Hermitage Museum, St Petersburg (Inv. no. ЛС-106 а,б, ВВс-230)

Prov.: Acquired before 1789



CHINESE

Rose-water sprinkler and stopper (1740s –50s)

silver, silver-gilt

29.5 x 10.0 cm diameter

The State Hermitage Museum, St Petersburg (Inv. no. ЛС-107 а,б, ВВс-1139)

Prov.: Acquired before 1789



CHINESE

Rose-water sprinkler and stopper (1740s –50s)

silver, silver-gilt

29.5 x 10.0 cm diameter

The State Hermitage Museum, St Petersburg (Inv. no. ЛС-108 а,б, ВБс-1140)

Prov.: Acquired before 1789



CHINESE

Casket with lid (1740s –50s)

silver, enamel, silver-gilt

19.5 x 24.0 x 10.0 cm (casket)

21.0 x 23.0 x 13.0 cm (lid)

40.5 x 47.0 x 26.0 cm (overall)

The State Hermitage Museum, St Petersburg (Inv. no. ЛС-1 а,б, ВБс-182)

Prov.: Acquired before 1789



CHINESE

Casket with lid (1740s –50s)

silver, enamel, silver-gilt

19.5 x 24.0 x 10.0 cm (casket)

21.0 x 23.0 x 13.0 cm (lid)

40.5 x 47.0 x 26.0 cm (overall)

The State Hermitage Museum, St Petersburg (Inv. no. ЛС-2 а,б, ВБс-183)

Prov.: Acquired before 1789



CHINESE

Box (1740s –50s)

silver, silver-gilt

6.5 x 17.0 x 13.0 cm

The State Hermitage Museum, St Petersburg (Inv. no. ЛС-594, ВБс-2819)

Prov.: Acquired before 1789



CHINESE

Box (1740s –50s)

silver, silver-gilt

6.5 x 17.0 x 13.0 cm

The State Hermitage Museum, St Petersburg (Inv. no. ЛС-606, ВБс-2994)

Prov.: Acquired before 1789



CHINESE

Box (1740s –50s)

silver, silver-gilt

13.5 x 10.5 x 6.0 cm

The State Hermitage Museum, St Petersburg (Inv. no. ЛС-610, ВБс-2998)

Prov.: Acquired before 1789



CHINESE

Box (1740s –50s)

silver, silver-gilt

13.5 x 10.5 x 6.0 cm

The State Hermitage Museum, St Petersburg (Inv. no. ЛС-593, ВБс-2818)

Prov.: Acquired before 1789



CHINESE

Box (1740s –50s)

silver, silver-gilt

8.0 x 6.0 x 5.5 cm

The State Hermitage Museum, St Petersburg (Inv. no. ЛС-597, ВБс-2946)

Prov.: Acquired before 1789



CHINESE

Box (1740s –50s)

silver, silver-gilt

8.0 x 6.0 x 5.5 cm

The State Hermitage Museum, St Petersburg (Inv. no. ЛС-611, ВБс-2999)

Prov.: Acquired before 1789



CHINESE

Box (1740s –50s)

silver, silver-gilt

18.0 x 15.0 x 6.5 cm

The State Hermitage Museum, St Petersburg (Inv. no. ЛС-607, ВБс-2995)

Prov.: Acquired before 1789



CHINESE

Box (1740s –50s)

silver, silver-gilt

16.0 x 13.0 x 6.0 cm

The State Hermitage Museum, St Petersburg (Inv. no. ЛС-608, ВБс-2996)

Prov.: Acquired before 1789



CHINESE

Box (1740s –50s)

silver, silver-gilt

16.0 x 13.0 x 6.0 cm

The State Hermitage Museum, St Petersburg (Inv. no. ЛС-609, ВБс-2997)

Prov.: Acquired before 1789



CHINESE

Salver (1740s –50s)

silver, silver-gilt

3.0 x 18.0 x 14.0 cm

The State Hermitage Museum, St Petersburg (Inv. no. ЛС-612, ВБс-3000)

Prov.: Acquired before 1789



CHINESE

Salver (1740s –50s)

silver, silver-gilt

3.0 x 18.0 x 14.0 cm

The State Hermitage Museum, St Petersburg (Inv. no. ЛС-613, ВБс-3001)

Prov.: Acquired before 1789



(stand only)

CHINESE

Leaf tray (1740s –50s)

silver

3.0 x 22.0 x 14.0 cm

The State Hermitage Museum, St Petersburg (Inv. no. ЛС- 39, ВБс-1111)

Prov.: Acquired before 1789



CHINESE

Leaf tray (1740s –50s)

silver

3.0 x 22.0 x 14.0 cm

The State Hermitage Museum, St Petersburg (Inv. no. ЛС- 40, ВБс-1112)

Prov.: Acquired before 1789



CHINESE

Crab-shaped box on a leaf tray (1740s –50s)

silver, enamel, silver-gilt

(a) 4.0 x 14.0 x 13.0 cm (box)

(b) 3.0 x 22.0 x 17.0 cm (tray)

The State Hermitage Museum, St Petersburg (Inv. no. ЛС-9 а,б, ВБс-186)

Prov.: Acquired before 1789



CHINESE

Crab-shaped box on a leaf tray (1740s –50s)

silver, enamel, silver-gilt

(a) 4.0 x 14.0 x 13.0 cm (box)

(b) 3.0 x 22.0 x 17.0 cm (tray)

The State Hermitage Museum, St Petersburg (Inv. no. ЛС-10 а, б, ВВс-187)

Prov.: Acquired before 1789



CHINESE

Table decoration in the form of a pair of birds (1740s –50s)

silver, enamel, silver-gilt

26.0 x 26.0 x 15.0 cm

The State Hermitage Museum, St Petersburg (Inv. no. ЛС-26, ВВс-189)

Prov.: Acquired before 1789



CHINESE

Table decoration in the form of a pair of birds (1740s –50s)

silver, enamel, silver-gilt

26.0 x 26.0 x 15.0 cm

The State Hermitage Museum, St Petersburg (Inv. no. ЛС-27, ВВс-190)

Prov.: Acquired before 1789



CHINESE

Pair of globular boxes with a lids (1740s –50s)

silver

6.0 x 12.0 cm diameter (each) (box)

7.0 x 12.0 cm diameter (each) (lid)

The State Hermitage Museum, St Petersburg (Inv. no. ЛС-4 а, б, ВВс-1087, ЛС-5 а, б ВВс-1088)

Prov.: Acquired before 1789



CHINESE

Tray (1740s –50s)

silver

3.0 x 20.0 x 15.0 cm

The State Hermitage Museum, St Petersburg (Inv. no. ЛС-41, ВБс-1113)

Prov.: Acquired before 1789



CHINESE

Tray (1740s –50s)

silver

3.0 x 20.0 x 15.0 cm

The State Hermitage Museum, St Petersburg (Inv. no. ЛС-42, ВБс-1114)

Prov.: Acquired before 1789



CHINESE

Cup (early 18th century)

silver, enamel

3.5 x 8.5 cm diameter?

The State Hermitage Museum, St Petersburg (Inv. no. ЛС-131, ВБс-248)

Prov.: Acquired before 1789



CHINESE

Cup (early 18th century)

silver, enamel

3.8 x 4.3 cm

The State Hermitage Museum, St Petersburg (Inv. no. ЛС-142, ВБс-258)

Prov.: Acquired before 1789



CHINESE

Cup (early 18th century)

silver, enamel

3.3 x 5.5 cm

The State Hermitage Museum, St Petersburg (Inv. no. ЛС-143, ВБс-259)

Prov.: Acquired before 1789



CHINESE

Cup (early 18th century)

silver, enamel

5.0 cm

The State Hermitage Museum, St Petersburg (Inv. no. ЛС-132, BBc-249)

Prov.: Acquired before 1789



CHINESE

Cup (early 18th century)

silver, enamel

4.0 x 3.0 x 7.0 cm

The State Hermitage Museum, St Petersburg (Inv. no. ЛС-133, BBc-250)

Prov.: Acquired before 1789



CHINESE

Cup and bowl (early 18th century)

papier mâché, silver, wood, mother-of-pearl, stone

5.7 x 13.5 cm

The State Hermitage Museum, St Petersburg (Inv. no. ЛС-236, BBc-340)

Prov.: Acquired before 1789



CHINESE

Bowl (early 18th century)

papier mâché, silver, wood, mother-of-pearl, stone

5.7 x 13.5 cm diameter

The State Hermitage Museum, St Petersburg (Inv. no. ЛС-235, BBc-339)

Prov.: Acquired before 1789



CHINESE

Saucer (17th century)

lacquer, mother-of-pearl, precious stones

14.5 cm diameter

The State Hermitage Museum, St Petersburg (Inv. no. ЛН-84)

Prov.: Acquired before 1789



CHINESE

Saucer (17th century)

lacquer, mother-of-pearl, semi-precious stones

14.5 cm diameter

The State Hermitage Museum, St Petersburg (Inv. no. ЛН-85)

Prov.: Acquired before 1789



CHINESE

Teapot with lid (17th century)

silver, enamel

18.0 x 5.5 cm

The State Hermitage Museum, St Petersburg (Inv. no. ЛС-80 а, б, ВВс-219)

Prov.: Acquired before 1789



CHINESE

Teapot with lid (17th century)

silver, enamel

18.0 x 6.0 cm

The State Hermitage Museum, St Petersburg (Inv. no. ЛС-78 а, б, BBc-217)

Prov.: Acquired before 1789



CHINESE

Lidded vessel (late 17th – early 18th century)

silver, enamel

32.5 x 7.5 cm

The State Hermitage Museum, St Petersburg (Inv. no. ЛС-124 а, б, BBc-246)

Prov.: Acquired before 1789



CHINESE

Lidded vessel (late 17th – early 18th century)

silver, enamel

32.5 x 7.5 cm

The State Hermitage Museum, St Petersburg (Inv. no. ЛС-118 а, б, BBc-240)

Prov.: Acquired before 1789



CHINESE

Lidded vessel (late 17th – early 18th century)

silver, enamel

30.0 x 7.5 cm

The State Hermitage Museum, St Petersburg (Inv. no. ЛС-129 а,б, ВБс-1145)

Prov.: Acquired before 1789



CHINESE

Lidded vessel (17th century)

silver, enamel

33.0 x 8.0 cm diameter

The State Hermitage Museum, St Petersburg (Inv. no. ЛС-127 а,б, ВБс-1147)

Prov.: Acquired before 1789



CHINESE

Teapot (18th century) (detail)

silver, enamel

13.5 x 6.0 cm diameter

The State Hermitage Museum, St Petersburg (Inv. no. ЛС-66 а, б, ВБс-208)

Prov.: Acquired before 1789



CHINESE

Teapot (early 18th century)

silver, enamel

14.5 x 6.5 cm diameter

The State Hermitage Museum, St Petersburg (Inv. no. ЛС-65 а,б, BBc-207)

Prov.: Acquired before 1789



CHINESE

Teapot with lid (18th century)

silver, enamel

13.5 x 6.5 cm diameter

The State Hermitage Museum, St Petersburg (Inv. no. ЛС-55 а,б, BBc-197)

Prov.: Acquired before 1789

NO IMAGE

CHINESE

Teapot with lid (18th century)

silver, enamel

12.2 x 6.0 cm diameter

The State Hermitage Museum, St Petersburg (Inv. no. ЛС-59 а, б, BBc-201)

Prov.: Acquired before 1789



CHINESE

Tray (17th century)

silver, enamel

11.2 x 11.2 cm

The State Hermitage Museum, St Petersburg (Inv. no. ЛС-255, BBc-359)

Prov.: Acquired before 1789



CHINESE

Tray (17th century)

silver, enamel

11.2 x 11.2 cm

The State Hermitage Museum, St Petersburg (Inv. no. ЛС-256, ВБс-360)

Prov.: Acquired before 1789



CHINESE

Teapot (late 17th century)

silver

18.5 x 6.5 cm

The State Hermitage Museum, St Petersburg (Inv. no. ЛС-87 а,б, ВБс-1132)

Prov.: Acquired before 1789



CHINESE

Lidded cup (late 17th century)

silver

7.0 x 6.5 cm diameter

The State Hermitage Museum, St Petersburg (Inv. no. ЛС-162 а, б, ВБс-1154)

Prov.: Acquired before 1789



CHINESE

Lidded cup (late 17th century)

silver

7.4 x 6.0 cm diameter

The State Hermitage Museum, St Petersburg (Inv. no. ЛС-163 а, б, ВБС-1155)

Prov.: Acquired before 1789



CHINESE

Cauldron goblet (late 17th century)

silver, silver-gilt

7.0 x 6.5 cm diameter

The State Hermitage Museum, St Petersburg (Inv. no. ЛС-49 ВБС-1118)

Prov.: Acquired before 1789



CHINESE

Cauldron goblet (17th century)

silver, silver-gilt

7.0 x 6.5 cm diameter

The State Hermitage Museum, St Petersburg (Inv. no. ЛС-50, ВБС-1119)

Prov.: Acquired before 1789



CHINESE

Figure of Shouxing, the Daoist god of Longevity (17th century)

gold

15.5 cm

The State Hermitage Museum, St Petersburg (Inv. no. ЛС-285, ВБз-517)

Prov.: Acquired before 1789



CHINESE

Figure of the Dao immortal Lu Dongbin (17th century)

gold

18.5 cm

The State Hermitage Museum, St Petersburg (Inv. no. ЛС-287, ВБз-519)

Prov.: Acquired before 1789



CHINESE

Censer in the form of Shouxing (17th century)

silver, silver-gilt

16.5 cm

The State Hermitage Museum, St Petersburg (Inv. no. ЛС-95, ВБс-1135)

Prov.: Acquired before 1789



CHINESE

Pair of earrings (17th –18th century)

gold, enamel

1.5 cm diameter (each)

The State Hermitage Museum, St Petersburg (Inv. no. ЛС-422 а,б, ВВз-467)

Prov.: Acquired before 1789



CHINESE

Pair of earrings (17th –18th century)

gold, enamel

1.5 cm diameter

The State Hermitage Museum, St Petersburg (Inv. no. ЛС-428 а,б, ВВз-473)

Prov.: Acquired before 1789



CHINESE

Pair of earrings (17th –18th century)

gold, enamel

1.5 cm diameter (each)

The State Hermitage Museum, St Petersburg (Inv. no. ЛС-426 а,б, ВВз-471)

Prov.: Acquired before 1789



CHINESE

Ring (17th –18th century)

gold, enamel

2.0 cm diameter

The State Hermitage Museum, St Petersburg (Inv. no. ЛС-460, ВВз-561)

Prov.: Acquired before 1789



CHINESE

Ring (17th –18th century)

gold, enamel

2.0 cm diameter

The State Hermitage Museum, St Petersburg (Inv. no. ЛС-419, ВБз-555)

Prov.: Acquired before 1789



CHINESE

Ring with flowers (17th –18th century)

gold, enamel

2.0 cm diameter

The State Hermitage Museum, St Petersburg (Inv. no. ЛС-420, ВБз-556)

Prov.: Acquired before 1789



CHINESE

Ring (17th –18th century)

gold, enamel

2.0 cm diameter

The State Hermitage Museum, St Petersburg (Inv. no. ЛС-459, ВБз-560)

Prov.: Acquired before 1789



CHINESE

Ring (17th –18th century)

gold, enamel

2.0 cm diameter

The State Hermitage Museum, St Petersburg (Inv. no. ЛС-417, ВБз-553)

Prov.: Acquired before 1789



CHINESE

Hair ornament (17th –18th century)

gold, rubies

7.0 x 8.0 cm

The State Hermitage Museum, St Petersburg (Inv. no. ЛС-300, BB3-380)

Prov.: Acquired before 1789



CHINESE

Hair ornaments with a qin and chequered board (17th –18th century)

gold, enamel, rock

9.0 x 6.0 cm

The State Hermitage Museum, St Petersburg (Inv. no. ЛС-305, BB3-385)

Prov.: Acquired before 1789



CHINESE

Hair ornaments with a qin and chequered board (17th –18th century)

gold, enamel, stone, pearl

10.0 x 7.0 cm

The State Hermitage Museum, St Petersburg (Inv. no. ЛС-306, BB3-386)

Prov.: Acquired before 1789



CHINESE

Flower adornment (17th –18th century)

gold, ruby

4.0 x 3.0 cm

The State Hermitage Museum, St Petersburg (Inv. no. ЛС-332, BB3-412)

Prov.: Acquired before 1789



CHINESE

Ornament with Shouxing (17th –18th century)

gold, rubies, sapphires, pearls

9.0 cm

The State Hermitage Museum, St Petersburg (Inv. no. ЛС-436, BB3-481)

Prov.: Acquired before 1789



CHINESE

Ornament: Boy on a Qilin (17th –18th century)

gold, enamel

4.0 x 5.0 cm

The State Hermitage Museum, St Petersburg (Inv. no. ЛС-437, BB3-482)

Prov.: Acquired before 1789



CHINESE

Dragon boat (17th –18th century)

gold, spinel

4.5 x 8.5 cm

The State Hermitage Museum, St Petersburg (Inv. no. ЛС-433, BB3-478)

Prov.: Acquired before 1789



CHINESE

Hairpin with an altar set (17th –18th century)

gold, silver, pearls

16.0 x 6.0 cm

The State Hermitage Museum, St Petersburg (Inv. no. ЛС-312, BB3-392)

Prov.: Acquired before 1789



CHINESE

Hairpin with an altar set (17th –18th century)

gold, silver, paint

17.5 x 5.5 cm

The State Hermitage Museum, St Petersburg (Inv. no. ЛС-450, BB3-495)

Prov.: Acquired before 1 ЛС-9



CHINESE

Hairpin with a hieroglyph (17th –18th century)

gold, spinel, tourmaline

16.5 x 5.5 cm

The State Hermitage Museum, St Petersburg (Inv. no. ЛС-313, BB3-393)

Prov.: Acquired before 1789



CHINESE

Hairpin in the form of a sceptre (17th –18th century)

gold, spinel, pearls, paint

12.0 x 3.5 cm

The State Hermitage Museum, St Petersburg (Inv. no. ЛС-322, BB3-402)

Prov.: Acquired before 1789



CHINESE

Hairpin with a phoenix (17th –18th century)

gold, silver, enamel, stone

15.5 x 6.0 cm

The State Hermitage Museum, St Petersburg (Inv. no. ЛС-339, BB3-419)

Prov.: Acquired before 1789



CHINESE

Hairpin with a phoenix (17th –18th century)

gold, paint, spinel, pearl

13.0 x 10.0 cm

The State Hermitage Museum, St Petersburg (Inv. no. ЛС-340, BB3-420)

Prov.: Acquired before 1789



CHINESE

Phoenix ornament (17th –18th century)

gold, enamel, stones

3.5 cm height

The State Hermitage Museum, St Petersburg (Inv. no. ЛС-351, BB3-430)

Prov.: Acquired before 1789



CHINESE

Phoenix ornament (17th –18th century)

gold, enamel, pearls

3.5 cm height

The State Hermitage Museum, St Petersburg (Inv. no. ЛС-353, BB3-432)

Prov.: Acquired before 1789



CHINESE

Phoenix ornament (17th –18th century)

gold, enamel, pearls, stone

3.5 cm height

The State Hermitage Museum, St Petersburg (Inv. no. ЛС-355, BB3-434)

Prov.: Acquired before 1789



CHINESE

Phoenix ornament (17th –18th century)

gold, enamel, stones

3.5 cm height

The State Hermitage Museum, St Petersburg (Inv. no. ЛС-363, BB3-442)

Prov.: Acquired before 1789



CHINESE

Phoenix ornament (17th –18th century)

gold, enamel, red stone

8.5 cm height

The State Hermitage Museum, St Petersburg (Inv. no. ЛС-356, BB3-435)

Prov.: Acquired before 1789



CHINESE

Crab ornament (17th –18th century)

gold, almandine, paint

4.5 cm height

The State Hermitage Museum, St Petersburg (Inv. no. ЛС-348, ВВз-428)

Prov.: Acquired before 1789



CHINESE

Panel with a crane (16th –17th century)

silk, gold thread

164.0 x 64.0 cm

The State Hermitage Museum, St Petersburg (Inv. no. ЛТ 8537)

Prov.: Acquired in 1998

