

RESPONDING TO GASCOIGNE

Most artists during their career are influenced by other artists or art movements. However, this important process is very different from the notion of 'copying', which does not encourage an artist to express their true individuality.

Gascoigne had a clear position on the question of influence and resolved to maintain her artistic individuality, commenting that:

Things in other peoples [sic] work influence you and I am all for that as long as you make it your own thing. You know, you want to speak louder than they do when you have finished.

Mary Eagle, 'Letters to Martin 1971–1980' in *From the Studio of Rosalie Gascoigne*, 2000, pp. 53, 55

- Discuss the meaning of Gascoigne's comment.
- Create an artwork influenced by Gascoigne.
You may like to consider the ideas below which have been created using photography as a medium.
- Investigate an urban environment close to you. Train your eye to find objects and surfaces which may not be considered traditionally 'beautiful', such as derelict houses or other buildings, peeling paint on old doors or walls, textures on rusted surfaces found on old cars or metal fences, lichen covered tree trunks etc.
- Photograph them from various angles and distances. Collect a bank of images which you could manipulate to make your artwork. Consider repetition or changing the scale or colour to create visual effects such as movement, or moods and feelings.

Derelict inner city house. Photo: Susie May



Detail of derelict inner city house. Photo: Susie May



Idea for artwork using manipulated details of the derelict inner city house. Photo: Susie May



Fruit and vegetable truck. Photo: Susie May



Detail of fruit and vegetable truck. Photo: Susie May



Idea for artwork using manipulated details of the fruit and vegetable truck. Photo: Susie May



Bank of photographs of urban textures. Photos: Susie May



Peeling fence



Decaying wall



Fruit crates



Rusting metal wall



Decayed grate



Rusting corrugated iron roof



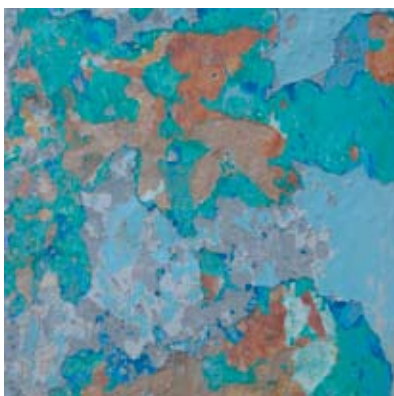
Burnt wall



Broken window



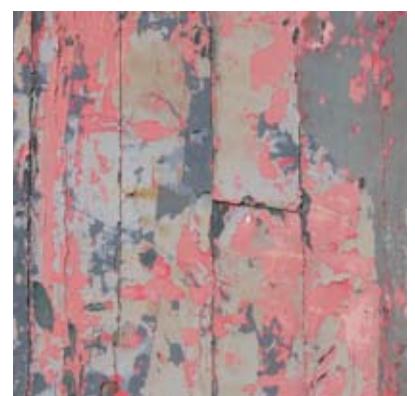
Worn timber



Decayed wall



Worn timber



Decayed wall

The following artworks which aim to evoke aspects of city life have been created using the bank of photographs of urban textures on the previous page

