

## PROTECTION OF CULTURAL OBJECTS ON LOAN

EXHIBITION: Julian Opie

EXHIBITION DATES: 9 November 2018 – 17 February 2019

VENUE: National Gallery of Victoria, International

### Note to the reader:

Works are arranged in chronological order and works within the same year are listed alphabetically by title. All measurements are in centimetres to the first decimal point, height x width for two-dimensional objects, height x width x depth for three-dimensional objects.

Measurements in parentheses are approximate or sight measurements.

### All works are Courtesy of the Julian Opie Archive, London

This checklist does not include artworks received as digital files or exhibition copies.

Under the requirements of the Protection of Cultural Objects on Loan Scheme, this checklist has been published on 13.09.2018. Information on the Protection of Cultural Objects on Loan Act 2013, and the National Gallery of Victoria's policies regarding foreign loans and claims handling, can be found at <https://www.ngv.vic.gov.au/about/reports-and-documents/>.

### Julian Opie

English 1958–

#### *Maria in the garden*

2009

acrylic lenticular in aluminium frame, 1/4

221 x 128.5 cm



#### *Waheed in Lord's robes*

2009

inkjet on canvas with aluminium frame

212 x 141.8 cm



*Felicia with peony*

2010

inkjet on canvas with aluminium frame

231.6 x 143.5



*Jenny with pearls. 1.*

2010

inkjet on canvas with stainless steel frame

228.4 x 142 x 5 cm

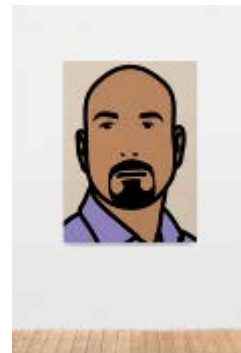


*Dimitri. 3.*

2016

inlaid and overlaid acrylic panel

170 x 134 x 4 cm

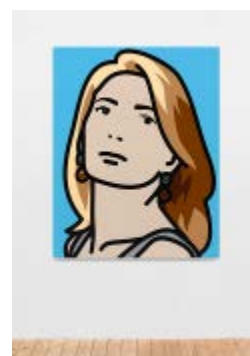


*Sabina 1.*

2016

inlaid and overlaid acrylic panel

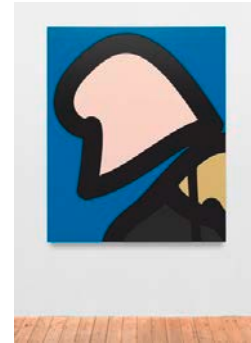
170 x 134 x 4 cm



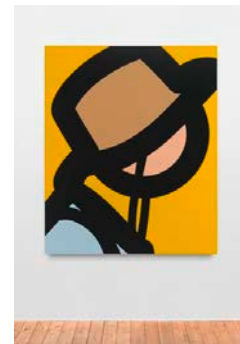
*Alberto. 1.*  
2017  
inlaid and overlaid acrylic panel  
170 x 134 x 4 cm



*Beach head. 8.*  
2017  
Paint on overlaid aluminium panel  
190 x 156 cm



*Beach head. 9.*  
2017  
Paint on overlaid aluminium panel  
190 x 156 cm



*Lucia. 2.*  
2017  
inlaid and overlaid acrylic panel  
170 x 134 x 4 cm



*Lucia, back 3.*  
2017  
Aluminium, vinyl and lights  
340 x 260 cm



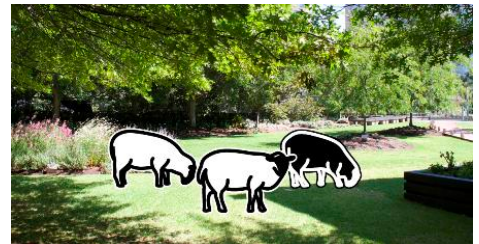
*Town head. 4.*  
2017  
Auto paint on aluminium  
200 x 164.2 cm



*Town head. 2.*  
2017  
Auto paint on aluminium  
200 x 164.2 cm



*3 stone sheep.*  
2018  
anodised aluminium inset in granite  
(a) 106.7 x 146.2 x 45.0 cm  
bronze inset in marble  
(b) 108.1 x 171.5 x 45.0 cm  
(c) 116 x 159.2 x 45.0 cm



*Axton. 4.*  
2018  
Aluminium, vinyl and lights  
300 x 230 x 12 cm



*Beach walkers.*

2018

Adonised aluminium

Dimensions variable (120.0 x 136.0 cm (irreg.) (each)



*City walkers.*

2018

Adonised aluminium

Dimensions variable (120.0 x 136.0 cm (irreg.) (each)



*Goatee.*

2018

Auto paint on aluminium

225 x 149.1 x 36 cm



*Hair bun.*

2018

Auto paint on aluminium

216.9 x 121.9 x 36 cm



*Head scarf.*

2018

Auto paint on aluminium

220.7 x 128.6 x 36 cm



*Peeing boy. (Fountain).*  
2018  
Steel, bronze, water  
350.0 x 115.9 x 5 cm



*Split dress.*  
2018  
Auto paint on aluminium  
131 x 221 x 36 cm  
id: 134274



*Walking in Melbourne. 1.*  
2018  
Vinyl on wooden stretcher  
250 x 284.2 x 3.5 cm



*Walking in Melbourne. 7.*  
2018  
Vinyl on wooden stretcher  
250 x 284.2 x 3.5 cm



*Water bottle.*  
2018  
Auto paint on aluminium  
152.9 x 223.6 x 36 cm

