

# MEL BOURNE DESIGN WEEK

12 – 22 MARCH  
2020

DESIGNWEEK.MELBOURNE

PRESENTED BY

**NATIONAL GALLERY  
OF VICTORIA NGV**



---

**CURATED AND PRESENTED BY THE  
NATIONAL GALLERY OF VICTORIA**

**TONY ELLWOOD AM**, Director  
**ANDREW CLARK**, Deputy Director  
**DON HERON**, Assistant Director, Exhibitions  
Management and Design  
**DONNA MCCOLM**, Assistant Director, Curatorial  
and Audience Engagement  
**EWAN MCEOIN**, The Hugh Williamson Senior  
Curator, Contemporary Design and Architecture  
**SIMONE LEAMON**, The Hugh Williamson Curator,  
Contemporary Design and Architecture  
**TIMOTHY MOORE**, Curator, Melbourne  
Design Week  
**MYF DOUGHTY**, Assistant Curator, Contemporary  
Design and Architecture  
**JES WAWRZYNSKI**, Public Programs Manager  
**ZOE KIRKBY**, Public Programmer  
**POLLY DYMOND**, Public Programs Representative  
**ALICE FAIRWEATHER**, Program Assistant

**CONTACT**

designweek@ngv.vic.gov.au

---

**MELBOURNE ART BOOK FAIR**

**MEGAN PATTY**, Head of Publications,  
Photographic Services and Library  
**ISABELLA FARCHIONE**, Project Assistant

---

**MELBOURNE DESIGN WEEK ADVISORY PANEL**

**ALICE BLACKWOOD**, Indesign  
**LIAM FENNESSY**, RMIT University  
**PETER HANDSAKER**, Creative Victoria  
**DENISE NERI**, Aesop  
**SARAH LYNN REES**, JCBa  
**BREE TREVENA**, Arup

---

**PROGRAM SUPPORTERS**

Architecture Foundation Australia  
Australian Graphic Design Association  
Australian Institute of Architects  
City of Melbourne  
Craft  
Deakin University  
Department of Environment, Land, Water  
and Planning  
Design Institute of Australia  
LCI Melbourne  
Melbourne Food and Wine Festival  
Melbourne Museum  
Monash University  
Office of the Victorian Government Architect  
Open House Melbourne  
RMIT University  
Robin Boyd Foundation  
Royal Botanic Gardens Victoria  
Swinburne University of Technology  
The University of Melbourne  
The University of Newcastle  
Virgin Australia Melbourne Fashion Festival

# MEL BOURNE DESIGN WEEK

## 12 – 22 MARCH 2020

**DESIGNWEEK.MELBOURNE**

# CONTENTS

<b>FROM THE MINISTER: INTRODUCING MELBOURNE DESIGN WEEK 2020</b>	<b>4</b>
MARTIN FOLEY MP	
MINISTER FOR CREATIVE INDUSTRIES	
<b>NGV DIRECTOR'S MESSAGE</b>	<b>6</b>
TONY ELLWOOD AM	
DIRECTOR, NATIONAL GALLERY OF VICTORIA	
<b>MELBOURNE DESIGN WEEK 2020 THEME: HOW CAN DESIGN SHAPE LIFE?</b>	<b>8</b>
<b>BIG IDEAS</b>	<b>10</b>
WASTE	12
DESIGN CULTURES	14
DESIGN EVOLUTION	16
HEALTHY CITIES	18
<b>PROGRAM HIGHLIGHTS</b>	<b>20</b>
MELBOURNE ART BOOK FAIR	46
MELBOURNE DESIGN WEEK AT MERCEDES ME	50
WATERFRONT	52
MELBOURNE DESIGN WEEK FILM FESTIVAL	60
<b>EXHIBITIONS</b>	<b>70</b>
<b>PROGRAM CALENDAR</b>	<b>102</b>
<b>CONTRIBUTORS INDEX</b>	<b>151</b>



## FROM THE MINISTER: INTRODUCING MELBOURNE DESIGN WEEK 2020

Melbourne Design Week returns in 2020 with its most extensive program to date, exploring how design can shape life.

From tackling e-waste to creating healthy cities and driving sustainability, design has the capacity to improve the way we live and address the challenges of our times.

This year the program extends across Greater Melbourne, with over 300 events spanning talks, exhibitions, films, tours and workshops and featuring the best in local and international design.

Melbourne Design Week is all about the power of design to make a difference, and celebrating the designers and innovators who are shaping our lives – now and in the future.

**Martin Foley MP**  
**Minister for Creative Industries**

Photo: Adrian Vittorio



## NGV DIRECTOR'S MESSAGE

Melbourne Design Week is the country's largest annual international design event. A testament to Victoria's status as Australia's most design-focused state, this event has experienced significant growth year on year since it began in 2017.

This year Melbourne Design Week will challenge and inspire us as we reflect on the capacity of design to shape our city and the world-at-large. How designers are engaging with the world around us offers viewpoints and solutions for tackling some of the world's most urgent challenges. This knowledge offers us immense possibility and opportunity to improve the way we live. This is why the Victorian Government and NGV are dedicated to investing in the design sector, including through Melbourne Design Week.

Running for 11 days from March 12, this year's festival takes place across Melbourne and Victoria in a range of spaces – from design studios and cinemas to commercial and public galleries, parks, train stations and waterways. Melbourne Design Week also includes the Melbourne Art Book Fair, which last year was the most attended publishing event in the Asia Pacific region. By bringing people together, new audiences are cultivated in which to celebrate design and architecture in Victoria today.

**Tony Ellwood AM**  
Director, National Gallery of Victoria

Installation view of *In Absence*, 2019, designed by Yhonnie Scarce and Edition Office for the 2019 NGV Architecture Commission at NGV International. Photo: Selina Ou

# MELBOURNE DESIGN WEEK

## 2020 THEME: HOW CAN DESIGN SHAPE LIFE?

In 2020, designers experiment with ideas, materials, places and processes to respond to the central question 'How can design shape life?'

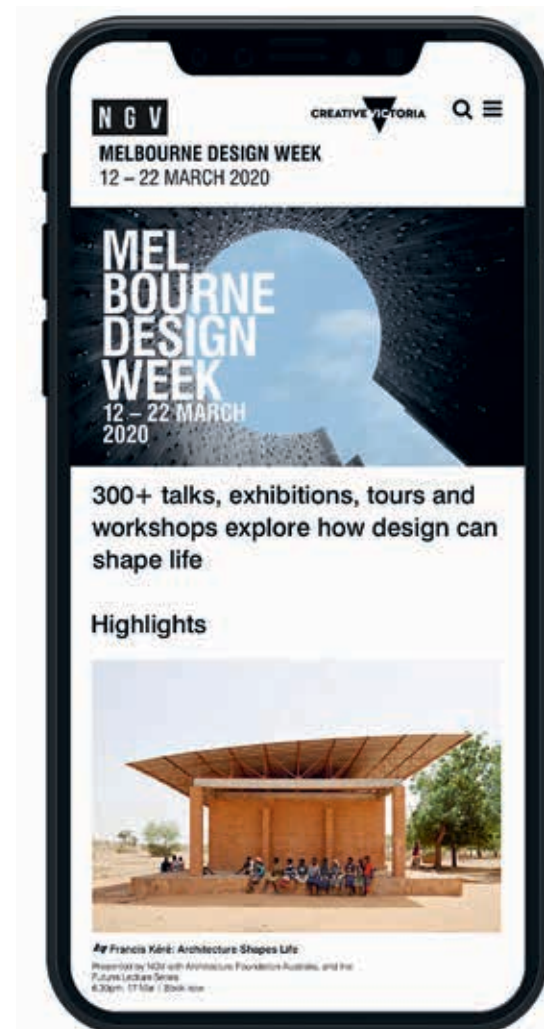
We can spend decades feeling that the world stands still. But in an instant the world can change forever through catalytic events. As ecological, economic and social issues converge, design can help us mitigate and respond to these complex problems by testing out possible scenarios, creating new ideas, and imagining the future before it arrives. Design can give us hope and be part of a solution.

In 2020, Melbourne Design Week explores the role of how design can shape life from big-picture thinking around global events to transforming the routines of everyday life. Melbourne Design Week explores the potential of design to shape life through four themes. Melbourne Design Week builds upon the success of its 2019 program

through continuing its exploration of Victoria's rivers, waterways and oceans with Open House Melbourne under the Waterfront program. The War on Waste continues with a special focus on e-waste. Design Cultures looks at the objects, experiences and beliefs that bind people together; Design Evolution highlights a new wave of design thinking; while the mental and physical pulse of our urban environment is checked in the thematic Healthy Cities.

This year Melbourne Design Week has expanded to over 300 events, but it holds to its core a Melbourne attitude rather than an aesthetic, in this expansion. This attitude is a responsibility for design to imagine and create better ways of doing things. You do not need to be a designer or from Melbourne or Victoria to have this attitude. Come along: talk, make, share, eat, discuss and listen. And most importantly, imagine a better life today.

**VIEW THE FULL PROGRAM  
AT DESIGNWEEK.MELBOURNE  
AND BOOK YOUR EXHIBITION AND  
EVENT TICKETS ONLINE.**



Subscribe to NGV Design eNews for all Melbourne Design Week updates.

**DESIGNWEEK.MELBOURNE**

#MELBOURNEDESIGNWEEK  
@NGVMELBOURNE



# BIG IDEAS

Four themes emerged from the 300-plus programs presented as part of Melbourne Design Week 2020 that reveal the concern designers have for the world and the forces that shape it, and speculate on how we might mould it. The following pages provide a snapshot of these big ideas with highlights from the program.

See [designweek.melbourne](https://designweek.melbourne) for bookings.



## WASTE

Climate change, waste and pollution are some of the defining moral issues of our time, spanning geographies and scale from whole ecosystems to individual consumer choices. This theme has a special focus on e-waste: phones, toys, electronics, lighting, anything with a battery or a wire. Follow the supply chain – from the exploitation of natural resources to the meltdown, repair and recycling of consumer goods – in order to learn how to reduce waste.

### **E-WASTE CHALLENGE LIVE PITCH FINAL VICTORIAN DESIGN CHALLENGE 2020**

**P. 26**

Presented by NGV

### **BAS VAN ABEL: DARK MATTER**

**P. 28**

Presented by NGV, the E-Waste Watch Institute and Design Institute of Australia

### **RE-MAKING E-WASTE LAB**

**P. 43**

Presented by RMIT School of Design and Monash Design

### **CODE BLACK COFFEE**

**P. 76**

Presented by Zwei Interiors Architecture, Code Black Coffee and Four Seasons Commercial Interiors

### **THE CONCRETE WASTE CHALLENGE**

**P. 97**

Presented by Curvconcrete

### **REGENERATIVE BIODESIGN: CO-EVOLVING SUSTAINABILITY**

**P. 113**

Presented by MPavilion

### **A WASTE SYMPOSIUM**

**P. 122**

Presented by Arup

### **9 HOUR FACTORY**

**P. 142**

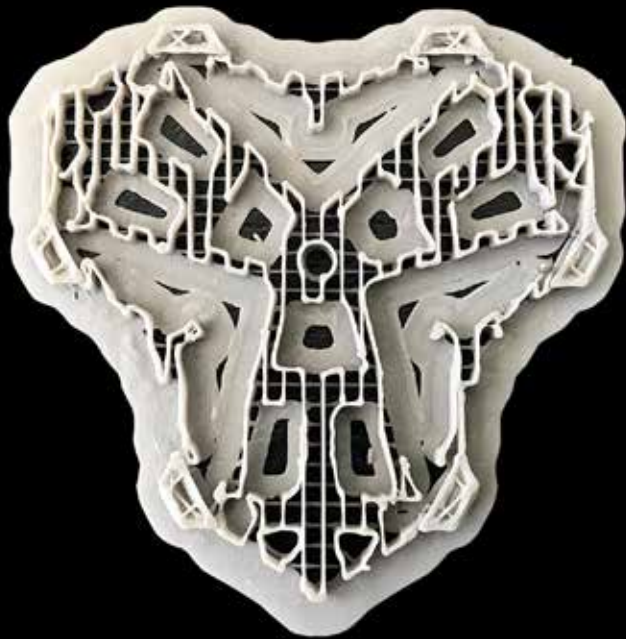
Presented by New Model by Dowel Jones

### **MELBOURNE 2030 – TRANSFORMING FROM A CONSUMER TO A PRODUCER**

**P. 144**

Presented by Finding Infinity

(previous spread) Image courtesy of Mycelium Studios  
(above) Photo: Bas Emmen on Unsplash



## DESIGN CULTURES

Life is shaped by contexts, beliefs, backgrounds and ideas that bring people together. How does design shape, and how is it shaped by, the multitude of cultures that exist in the world? How does design champion diverse cultural perspectives, tacit knowledge and cultural practices? Design itself is an act of cultural production.

### FRANCIS KÉRÉ: ARCHITECTURE SHAPES LIFE P. 22

Presented by NGV with Architecture Foundation Australia and the Futuna Lecture Series

### NMBW: OBSERVATION MATTERS P. 32

#### ROBIN BOYD ANNUAL KEYNOTE LECTURE

Presented by NGV and the Robin Boyd Foundation

### LIFE AND DEATH P. 42

Presented by Friends and Associates

### BLACK BAMBOO: CONTEMPORARY P. 74

#### FURNITURE DESIGN FROM MER, TORRES STRAIT

Presented by NGV

### ELEGY P. 78

Presented by Gallery Funaki

### TRANSCENDENCE P. 99

Presented by Modern Times

### MULTIPLICITY OF PLAY/CE P. 106

Presented by RMIT University

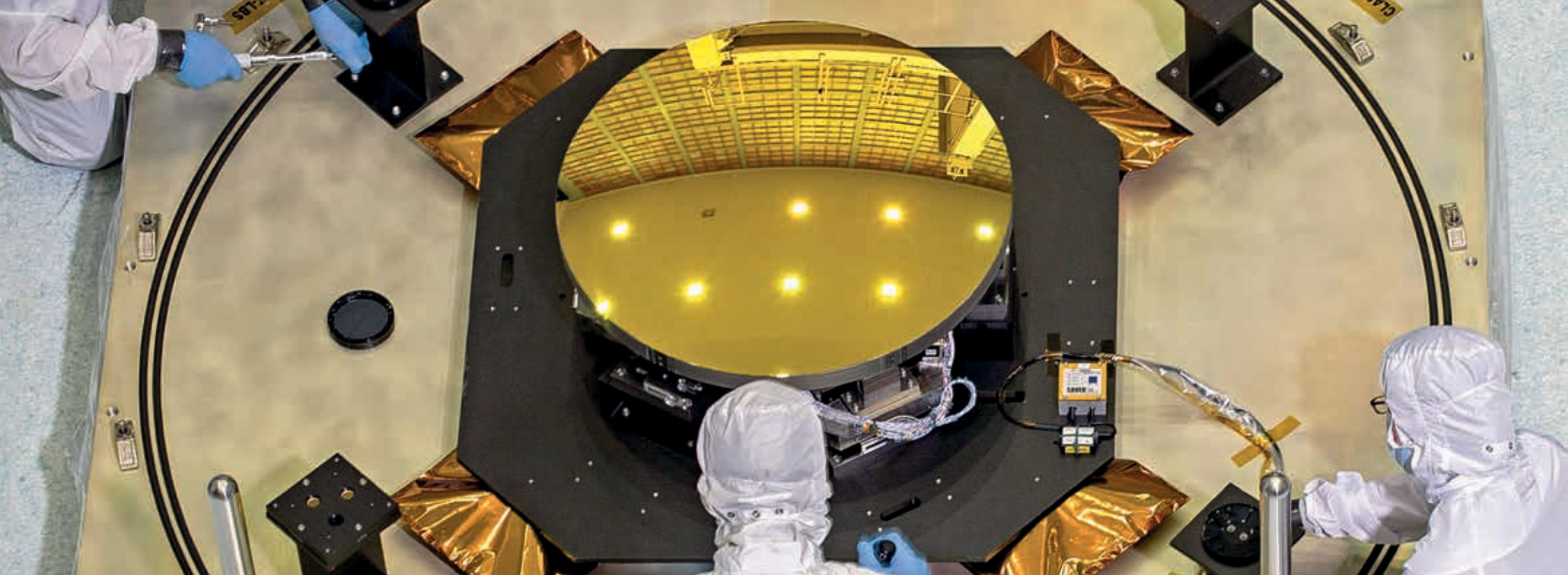
### KEYNOTE LECTURE: FRANCESCO CARERI P. 125

Presented by Molonglo

### THE RELATIVE RESTAURANT P. 138

Presented by Relative Projects

(above) Image courtesy of Mark Richardson



## DESIGN EVOLUTION

How will design transform our ways of life in the future? Designers are reimagining buildings, vehicles, products and garments made possible by innovative supply chains and groundbreaking materials. From speculative structures, systems and materials, to breakthrough approaches to practice, urban resilience and social impact, this theme advocates a new wave of design thinking.

### ELLEN BROAD: ARTIFICIAL INTELLIGENCE | MADE BY HUMANS TELSTRA CREATIVITY AND INNOVATION SERIES

P. 24

Presented by Telstra and NGV

### IN CONVERSATION: DR VICKI COUZENS WITH MYLES RUSSELL-COOK

P. 30

Presented by NGV

### AURUM

P. 42

Presented by Georgia Nowak and Eugene Perepletchikov

### VORES VÆVNINGER: OUR WEAVINGS

P. 42

Presented by Tove Papp Lindkvist in collaboration with the weavers from the Danish Institute for the Blind and Partially Sighted

### ANTHROPOCENE: THE HUMAN EPOCH

P. 62

Presented by Melbourne Design Week and curated by Richard Sowada

### FUTURE PROTOTYPING

P. 80

Presented by Melbourne School of Design

### MYCODOME

P. 87

Presented by Mycelium Studios

### GEOGRAPHIES OF GOLD

P. 119

Presented by Monash Architecture

### INDUSTRIAL DESIGN: DESIGN EVOLUTION IN THE ARCHIVES

P. 127

Presented by RMIT Design Archives

(above) Image courtesy of NASA/Chris Gunn



## HEALTHY CITIES

More people live in cities than ever before. Cities offer profound economic and social opportunities but they also come with challenges, including social inequality, human isolation and housing unaffordability. Design increasingly takes on the role of redressing the problems of the city and proposes ways to improve health – both mental and physical – for humans, animals, plants and beyond.

### TRANSFORMATIVE LANDSCAPES: RESHAPING THE CITY THAT SHAPES US P. 34

Presented by Foreground, Vic Health and NGV

### MAKE GOOD: THE FITZROY HOUSING REPAIR ADVISORY SERVICE P. 84

Presented by Very Little Architecture

### COMBATING BURNOUT IN THE DESIGN INDUSTRY P. 104

Presented by Comuniti

### WALKSCAPES: TREEGAZING, FITZROY GARDENS P. 107

Presented by Heather Hesterman and  
Amanda Hawkey

### MTALKS: DENSITY, PUBLIC SPACE AND HAPPINESS P. 117

Presented by MPavilion

### DESIGN PRACTICES FOR MORE THAN HUMAN COMMONS P. 120

Presented by The University of Newcastle and  
RMIT University

### GOOD DESIGN AND HERITAGE: WHEN NEW MEETS OLD P. 133

Presented by Heritage Council of Victoria and  
Office of the Victorian Government Architect

### ALEX STITT AND EXERCISEMENTS: COMMUNICATION DESIGN AND HEALTH PROMOTION P. 134

Presented by RMIT Design Archives

### HUMAN EXPERIENCES. HEALTHY ENVIRONMENTS P. 135

Presented by ID-LAB

(above) Image courtesy of Melbourne Water

(following spread) Smoking Ceremony held at Bolin Bolin Billabong. Image courtesy of Open House Melbourne



# PROGRAM HIGHLIGHTS

See [designweek.melbourne](https://designweek.melbourne) for bookings.



### FRANCIS KÉRÉ: ARCHITECTURE SHAPES LIFE

Presented by NGV with Architecture Foundation Australia and the Futuna Lecture Series

**TUE 17 MAR, 6.30–7.30PM**

Responding to the 2020 Melbourne Design Week theme 'How can design shape life?', internationally acclaimed architect Francis Kéré delves into his own journey – revealing how architecture has shaped his life and sharing his vision for how architecture that is collaboratively realised, rooted in traditional knowledge and specific to its context will contribute to a positive and dynamic future for Africa.

**Cost** \$28 NGV Member / \$35 Adult /

\$32 Concession, bookings required

**Venue** Great Hall, Ground Level, NGV International, 180 St Kilda Rd, Melbourne

This is an Auslan interpreted program



Supported by RMIT University School of Architecture and Urban Design

### SPEAKER

Architect Francis Kéré was born in the small West African town of Gando in Burkina Faso. After being awarded a scholarship to apprentice in Germany, Kéré garnered critical praise when he was awarded the prestigious Aga Khan Award for Architecture (2004) for his first ever building – a primary school he designed, raised the funds for and realised in collaboration with the residents of his native Gando.



(above) Francis Kéré. Image courtesy of Kéré Architecture  
(background image) Gando Primary School.  
Photo: Erik-Jan Ouwerkerk

**ELLEN BROAD: ARTIFICIAL INTELLIGENCE |  
MADE BY HUMANS  
TELSTRA CREATIVITY AND INNOVATION SERIES**

Presented by Telstra and NGV

**THU 19 MAR, 6.30–7.30PM**

Artificial Intelligence (AI) influences our lives whether we notice it or not. From scheduling public transport to financial management and national security, automated systems are doing everything from repetitive administrative tasks through to providing perceived impartiality in morally complex decision making. But who designs them, and who decides their influence? Does it matter whether we notice the influence of AI or not? Ellen Broad, Senior Fellow at the 3A Institute of the Australian National University, explores the choices designers face and the trade-offs they make in crafting AI systems that shape the lives of citizens.

**Cost** \$28 NGV Member / \$35 Adult / \$32 Concession, bookings required

**Venue** Great Hall, Ground Level, NGV International, 180 St Kilda Rd, Melbourne

This is an Auslan interpreted program



The Telstra Creativity and Innovation Series is an initiative of Telstra and NGV, an annual presentation that showcases the work of world-leading innovators.

**SPEAKER**

Ellen Broad is an industry leader in the design, development and communication of technology. With a career spanning policy, standards and engineering, Broad has held positions including Head of Technical Delivery for the Consumer Data Standards program with CSIRO's Data61, Head of Policy for the Open Data Institute (ODI), ministerial adviser on data to senior UK cabinet minister Elisabeth Truss and Manager of Digital Policy and Projects for the International Federation of Library Associations and Institutions in the Netherlands. Broad is Senior Fellow with the 3A Institute, founded by Distinguished Professor Genevieve Bell, within the College of Engineering and Computer Science at Australian National University. She is a member of the Australian government's Data Advisory Council and author of *Made by Humans: the AI Condition* (Melbourne University Publishing, 2018).



(above) Ellen Broad. Photo: Amanda Thorson

## E-WASTE CHALLENGE LIVE PITCH FINAL VICTORIAN DESIGN CHALLENGE 2020

Presented by NGV

**WED 18 MAR, 10AM–3.30PM**

Creative Victoria and NGV are offering a \$20,000 major prize for the best design idea in the Professional category and \$5000 in the Tertiary category in a challenge addressing one of the world's fastest growing waste problems – e-waste. Teams in each category will have to convince the Challenge jury, chaired by Craig Reucassel from the ABC's *War on Waste*, that their idea is the best solution to tackle the 40 million tonnes of e-waste produced globally every year. The E-Waste Challenge aims to highlight the capacity and responsibility of designers to contribute to shifting behaviour, raising awareness, redesigning products, or devising smart end-of-life solutions that reduce the negative impacts of e-waste.

**FREE**

**Venue** Great Hall, Ground Level,  
NGV International, 180 St Kilda Rd, Melbourne

## SHORTLIST

### PROFESSIONAL CATEGORY

Derek Oskar Raj Zari  
CECIL  
Relectrify  
Sam Barrett  
Vert Design  
Bryan Chung

### TERTIARY STUDENT

Henry Blain, RMIT University  
Circo, RMIT University  
MangoMen, Monash University  
Phoebe Richardson, RMIT University

### PRIMARY/ SECONDARY STUDENT

Finlay Van Lieshout  
Mill Park Library Makers Club

## JURY

### Craig Reucassel

Jury Chair, Presenter, ABC's *War on Waste*

### Bas van Abel

Founder and former CEO, Fairphone,  
the Netherlands

### Rose Read

Director and Co-founder, Ewaste Watch Institute

### Richard Hoare

Design and Innovation Director, Breville  
Group Ltd

### Ewan McEoin

The Hugh Williamson Senior Curator,  
Contemporary Design and Architecture, NGV

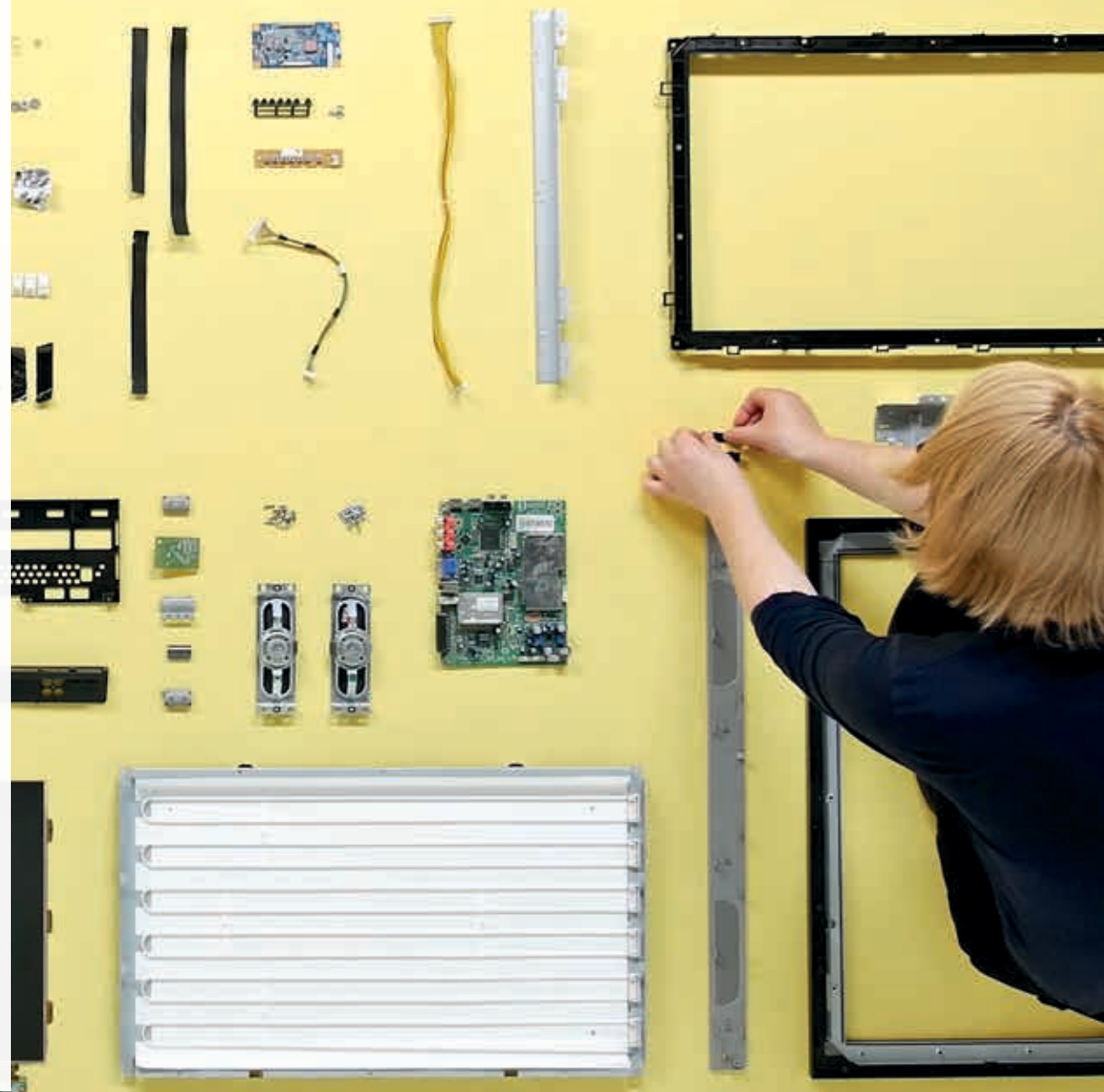
PRESENTED BY



SUPPORTED BY

The NGV Department of Contemporary Design and Architecture is generously supported by The Hugh D. T. Williamson Foundation. The Victorian Design Challenge is endorsed by the Design Institute of Australia, Australian Graphic Design Association, Victorian Tech Schools, and the Design and Technology Teachers' Association Australia.

(background image) Formafantasma, 2017, *Taxonomy, 01\_05\_58"* from *Ore Streams*. National Gallery of Victoria, Melbourne



**BAS VAN ABEL: DARK MATTER**

Presented by NGV, E-Waste Watch Institute and Design Institute of Australia

**WED 18 MAR, 6.30–7.30PM**

We live in a world of hyper-communication. And yet our current communication infrastructure, in particular mobile phones, holds a fascinating paradox. The mobile phone is a symbol of instant connectivity, but it's clear that we've lost any connection with the source of how it is made, who made it, where it comes from and the social and environmental consequences of the production process. Every pixel you see and every byte you send has a whole world of minerals, factories, recycling and distribution behind it. *Fairphone* aims to surface the dark matter of their production systems and make it human again. This keynote lecture by *Fairphone* founder Bas van Abel is a unique chance to think about the ways that design-led business can transform the environment and economy.

**Cost** \$28 NGV Member / \$35 Adult / \$32 Concession, bookings required

**Venue** Great Hall, Ground Level, NGV International, 180 St Kilda Rd, Melbourne

**SPEAKER**

Bas van Abel is a social entrepreneur and innovator. He founded *Fairphone*, the producer of the world's first sustainable, modular smartphone and the fastest growing tech start-up in Europe. For *Fairphone*, van Abel led the largest ever European crowdfunding campaign (7.5 million euros).



(above) Bas van Abel. Photo: Frank Bauer  
(background image) Fairphone  
Image courtesy of Bas van Abel

PRESENTED BY

**NATIONAL GALLERY  
OF VICTORIA** NGV

**CREATIVE VICTORIA**

**ewaste  
watch**

**EY**  
Building a better  
working world

**Design  
Institute of Australia**

MEDIA PARTNER

**BROADSHEET**

The NGV Department of Contemporary Design and Architecture is generously supported by The Hugh D. T. Williamson Foundation.





---

**IN CONVERSATION: DR VICKI COUZENS  
WITH MYLES RUSSELL-COOK**

---

Presented by NGV

**WED 18 MAR, 6.30–7.30PM**

Multi-media artist and Senior Knowledge Holder of Language and Possum Cloak Story, Dr Vicki Couzens speaks with NGV's Curator of Indigenous Art, Myles Russell-Cook about the reclamation and revival of Possum Skin Cloaks in the South East.

**FREE** bookings required

**Venue** NGV Members Lounge, Ground Level,  
NGV International, 180 St Kilda Rd, Melbourne

(above) Vicki Couzens, Thanampool Tyamateeyt Koormookyan *Women's Law Cloak*, 2019. National Gallery of Victoria, Melbourne



---

**IN CONVERSATION: LISA WAUP  
WITH HANNAH PRESLEY**

---

Presented by NGV

**THU 19 MAR, 6.30–7.30PM**

Award-winning artist and designer Lisa Waup discusses design and collaboration with NGV's Curator of Indigenous Art, Hannah Presley.

**FREE** bookings required

**Venue** NGV Members Lounge, Ground Level,  
NGV International, 180 St Kilda Rd, Melbourne

(above) Lisa Waup in her studio, Melbourne, 2019. Photo: Selina Ou

# **NMBW: OBSERVATION MATTERS** **ROBIN BOYD ANNUAL KEYNOTE LECTURE**

Presented by NGV and the Robin Boyd Foundation  
**WED 18 MAR, 6.30–7.30PM**

In an era of global sameness, can architectural processes create the time and space to engage meaningfully with local traditions and enrich the culture of the everyday? This lecture breaks down NMBW's projects into a series of tangible pieces that articulate how decisions have been made and values embedded.

**Cost** \$10 NGV Member & RBF Friend Member / \$15 Adult / \$8 Concession, bookings required  
**Venue** Clemenger BBDO Auditorium, Ground Level, NGV International, 180 St Kilda Rd, Melbourne

PRESENTED BY



## **SPEAKERS** **NMBW FOUNING DIRECTORS**

**Marika Neustupny**, NMBW Founding Director  
Marika Neustupny's research and project work emphasises a strong understanding of social and cultural rituals of urban life. She has a Master of Architecture from Tokyo Institute of Technology (Japan) and a PhD from the University of Queensland. She has authored *Curtain Call: Melbourne's Mid-century Curtain Walls* and co-authored *By-Product-Tokyo* with Nigel Bertram and Shane Murray.



**Lucinda McLean**, NMBW Founding Director  
Lucinda McLean explores the possibilities for design to shape relationships between architectural, urban and landscape strategies that work to increase landscape specificity and local identity. She has twenty years' experience teaching design and urban research at RMIT University, holds a Master of Architecture from Stäedelschule (Germany) and is a PhD candidate at RMIT University. Currently she sits on the Design Review Panel for the Office of the Victorian Government Architect.



**Nigel Bertram**, NMBW Founding Director  
Nigel Bertram has a range of experience working with government and university bodies at different scales on NMBW's urban and institutional projects. He is a Practice Professor in Architecture at Monash University, and holds a Master of Architecture and a PhD from RMIT University. He has authored several research publications, including *In Time with Water: Design Studies of 3 Australian Cities*, edited with Catherine Murphy, and *Suburbia Reimagined: Ageing and Increasing Populations in the Low-Rise City* with Leon Van Schaik. He is currently a Design Review Panel member for the Office of the Victorian Government Architect.

(above) Marika Neustupny, Lucinda McLean, Nigel Bertram.  
Images courtesy of NMBW  
(background image) Photo: Lucinda McLean

## TRANSFORMATIVE LANDSCAPES: RESHAPING THE CITY THAT SHAPES US

Presented by Foreground, Vic Health and NGV  
**THU 19 MAR, 8.30AM–1PM**

The way we design and plan our cities, parks and places has profound effects on our health and wellbeing. In this symposium, design and health experts explore the role of landscape architecture, urban design and planning in making healthful urban environments.

**Cost** \$40 Adult / \$25 Student, bookings required

**Venue** Clemenger BBDO Auditorium,  
Ground Level, NGV International,  
180 St Kilda Rd, Melbourne

## SPEAKERS

### Lily Jencks

Lily Jencks is the principal of Lily Jencks Studio, an award-winning design firm based in the United Kingdom that integrates architecture, landscape and art to improve the environment of our cities and surroundings. Jencks is the daughter of the late Charles Jencks and Maggie Keswick Jencks, founders of the Maggie's Centres. Jencks is a designer of the landscape and gardens of several of the Maggie's Centres and remains deeply involved with the charity.

### Dr Paul Torzillo

Dr Paul Torzillo is one of the founding directors of Healthabitat, a not-for-profit company aiming to improve the health of people living in poverty throughout the world, primarily through facilitating improvements to housing and living environments. Torzillo is the Medical Director of the Nganampa Health Council in the north west corner of South Australia, Head of Respiratory Medicine and a senior Intensive Care physician at the Royal Prince Alfred (RPA) Hospital in Sydney, Clinical Professor of Medicine at the University of Sydney and Clinical Director of critical care services for the Sydney Local Area Health District.

### Claire Martin

Claire Martin is Associate Director of Oculus, where she is responsible for the direction, management and delivery of complex public realm and infrastructure projects. Claire is a Board Director of the Australian Institute of Landscape Architects, a contributing editor of Landscape Architecture Australia, and a member of the Office of the Victorian Government Architect's Victorian Design Review Panel and RMIT University's Landscape Architecture Industry Advisory Committee.

### Professor Billie Giles-Corti

Professor Billie Giles-Corti is a Distinguished Professor at RMIT University and directs the Healthy Liveable Cities Research Group at RMIT's Centre for Urban Research. Her work focuses on the impact of the built environment on health and wellbeing. Giles-Corti is Director of RMIT's Urban Futures Enabling Capability Platform and a National Health and Medical Research Council (NHMRC) Senior Principal Research Fellow. She currently leads a National Health and Medical Research Council (NHMRC) Centre of Research Excellence in Healthy Liveable Communities.

(background image) Victorian Health and Human Services Building Authority (VHHSBA). Image courtesy of Foreground

**AUSTRALIAN FURNITURE DESIGN AWARD 2020 EXHIBITION**

Presented by NGV and Stylecraft

**12–20 MAR, MON–FRI, 8.30AM–5PM & SAT, 10AM–4PM**

The Australian Furniture Design Award (AFDA) is one of Australia's most significant furniture design awards, recognising excellence in Australian furniture design and its contribution to design discourse and Australian culture. In response to the Melbourne Design Week theme 'How can design shape life?' the 2020 AFDA asks designers and makers to consider the broader implications and opportunities of furniture design. From the many entries received five finalists will present their realised designs for exhibition and judging in the Stylecraft Melbourne showroom during Melbourne Design Week.

**FREE**

**Venue** Stylecraft, 145 Flinders Ln, Melbourne

**FINALISTS**

Design King Company with Dr Christian Tietz  
Marta Figueiredo  
Supercyclers with Seljak Brand  
Michael Gittings  
James Walsh

**JURY**

**Tony Russell**

Brand Director, Stylecraft

**Simone LeAmon**

Jury Chair, The Hugh Williamson Curator,  
Contemporary Design and Architecture, NGV

**Brian Parkes**

CEO, JamFactory

**Helen Kontouris**

Designer and Creative Director, LEN

PRESENTED BY

NATIONAL GALLERY  
OF VICTORIA NGV

stylecraft

CREATIVE VICTORIA

AUSTRALIAN FURNITURE DESIGN AWARD

A F  
D A

(background image) Stylecraft Melbourne. Photo: Nicole England



### METAHAVEN: FIELD REPORT

Presented by RMIT Design Hub Gallery and Melbourne Art Book Fair

**12–22 MAR, TUE–FRI, 10AM–5PM & SAT, 12–5PM**

The Cold War's information shortages have been replaced by ever-accessible information overloads. Everybody becomes a broadcaster, designer, filmmaker, prosecutor, judge, key witness, perpetrator and storyteller. This is not merely a political and social fact, but also an aesthetic and cinematic regime. Propaganda becomes a lived reality, necessitating novel forms of media literacy.

The work of Amsterdam-based artists, filmmakers, and designers Metahaven occupies the intersection of poetry and storytelling, and engages propaganda, interface, and physical geography and its imaginaries. *Metahaven: Field Report* is their first solo presentation in Australia.

The exhibition consists of *Arrows*, a new series of woven tapestries, and *Eurasia* (*Questions on Happiness*), their immersive 2018 film installation. *Eurasia* is a cinematic assemblage of landscapes of the south-eastern Ural (Russia) built around an associative narrative of political fragmentation in Europe. Like many of Metahaven's other works, *Eurasia* is itself a field report on the incongruences of lived experience through media stacks, in which the steppe interjects with soft, heavenly nothingness — a space vast, tender and forgiving, without dimension or aspect ratio.

#### FREE

**Venue** RMIT Design Hub, Level 2, Building 100, cnr Victoria St and Swanston St, Carlton. Enter via the Victoria St forecourt

#### Guest exhibition curators

Brad Haylock (RMIT University) and Megan Patty (NGV)

#### Exhibition program curators

Kate Rhodes, Fleur Watson and Nella Themelios (RMIT Design Hub Gallery)

(background image) Metahaven, *Eurasia* (*Questions on Happiness*), 2018. Installation view at Institute for Contemporary Arts, London, 2018. Photo: Mark Blower @ Mark Blower 2018

**DESIGNWORK 04: DALE HARDIMAN AND STEPHEN ROYCE | DANIELLE BRUSTMAN**

Presented by Sophie Gannon Gallery

**12-22 MAR, TUE-SAT, 11AM-5PM**

**OPENING: SAT 14 MAR, 3PM**

*Designwork 04* is the fourth exhibition in an ongoing series dedicated to presenting the best contemporary Australian design.

*Designwork 04* features presentations by Melbourne-based designers Dale Hardiman in collaboration with Stephen Royce exploring light through common handheld devices, and Danielle Brustman encompassing interior, furniture, lighting and object design.

**FREE**

**Venue** Sophie Gannon Gallery, 2 Albert St, Richmond

(background image) Danielle Brustman, *Designwork 04: Chromatic Fantastic*, 2019, image courtesy of the artist and Sophie Gannon Gallery. Photo: Jonathon Griggs

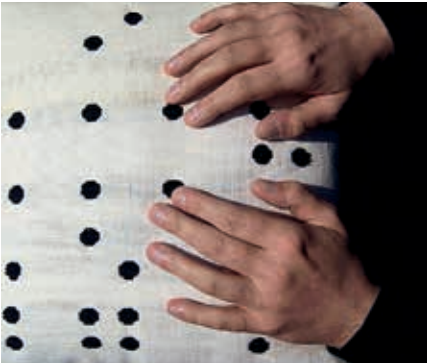


PROGRAM HIGHLIGHTS

VORES VÆVNINGER: OUR WEAVINGS

Presented by Tove Papp Lindkvist with the weavers from the Danish Institute for the Blind and Partially Sighted  
**12-21 MAR, TUE-FRI, 12-6PM & SAT 1-8PM**  
A tactile textile exhibition showcasing the weaving of blind and visually impaired weavers of the Danish Institute for the Blind and Partially Sighted.

**FREE**  
**Venue** Ladder Art Space, 81 Denmark St, Kew



AURUM

Presented by Georgia Nowak and Eugene Pereplechikov  
**SAT 14 MAR, 11AM-6PM & SUN 15 MAR, 11AM-5PM**  
*Aurum* is a moving-image installation that examines the complex relationship of humans with gold, and its power to transform societies.

**FREE**  
**Venue** ANZ Gothic Bank, 388 Collins St, Melbourne (corner Collins and Queens Streets)



LIFE AND DEATH

Presented by Friends and Associates  
**12-21 MAR, 10AM-5PM DAILY**  
**OPENING: FRI 13 MAR, 6-10PM**  
Urns made from soil, screens made from urine fed bacteria, chandeliers made from cracked phone screens and sending artworks into space: this exhibition presents projects by Australian creative practitioners exploring life and death.

**FREE**  
**Venue** Meat Market Stables, 2-8 Wreckyn St, North Melbourne



(top to bottom) © Tove Papp Lindkvist; Image courtesy of NASA/Chris Gunn; Image courtesy of Mark Richardson. (opposite) Photo: Juan Sanin



RE-MAKING E-WASTE LAB

Presented by RMIT School of Design and Monash Design  
**OPENING FORUM: MON 16 MAR, 5.30-7.30PM**, bookings required  
**WORKSHOPS: TUE 17, WED 18 & THU 19 MAR, 10AM-4PM**, bookings required  
**EXHIBITION: FRI 20 MAR, 4-7PM**  
*Re-Making E-Waste* is a 'speculative repair' lab that invites participants of Melbourne Design Week to shape new lives for old e-things.  
**FREE** bookings required  
**Venue** Building 45, RMIT University, 61/89 Lygon St, Carlton

## PROGRAM HIGHLIGHTS

### PARTU (SKIN) BY JOHNNY NARGOODAH AND TRENT JANSEN

Presented by Gallery Sally Dan-Cuthbert and  
Arc One

**13–22 MAR, TUE–SAT, 11AM–5PM**

**OPENING: FRI 13 MAR, 6–8PM**

**FLOOR TALK: SAT 14 MAR, 3.30–4.30PM**

*Partu (Skin)* is the latest collaboration between  
remote cattle-station saddler Johnny Nargoodah  
and conceptual object designer Trent Jansen: an  
experiment in avant-garde furniture design resulting  
from the coming together of their oddly mismatched  
sensibilities and skills in working with animal skins.

**FREE**

**Venue** Arc One, 45 Flinders Ln, Melbourne



### WHICH MIRROR DO YOU WANT TO LICK?

Presented by Ābāke, Sofie Dederen, Radim Peško  
and Brad Haylock

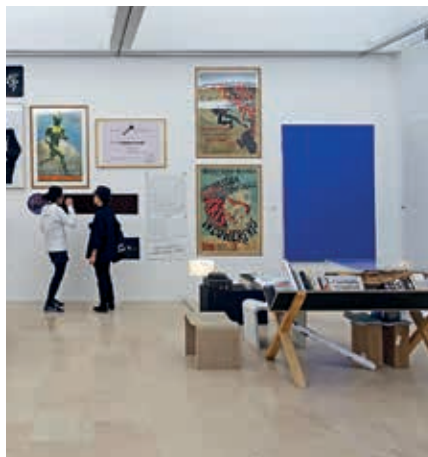
**18–22 MAR, 10AM–6PM DAILY**

**OPENING: TUE 17 MAR, 6–8PM**

Departing from the assumption that when some-  
thing is printed it becomes more real, this exhibition  
of speculative and experimental graphic design  
explores the slippery line between reality and fiction.

**FREE**

**Venue** At the Above, Level 1, 198 Gertrude St,  
Fitzroy



(top to bottom) Trent Jansen and Johnny Nargoodah, *Ngumu Jangka Warnti Chair*. Photo: Abraham Markos; © WMDYWTL? 2017

NGVARTBOOKFAIR.COM

# MELBOURNE ART BOOK FAIR

# 13–15 MARCH

N  
G  
V

PRESENTING PARTNER

MAJOR SUPPORTER

DESIGN PARTNER

EVENT PARTNER

CREATIVE VICTORIA

THE CORNISH  
FAMILY

RMIT  
UNIVERSITY

Asahi

# MELBOURNE ART BOOK FAIR PROGRAM HIGHLIGHTS

The annual Melbourne Art Book Fair returns for its sixth year in 2020. From 13 to 15 March the Fair assembles publishers, artists, designers and writers from around the globe. The Fair presents over forty events, including lectures, workshops, book launches and performances discussing contemporary publishing practice in all its forms. Key guests include Metahaven (Amsterdam), the Strelka Institute for Media, Architecture and Design (Moscow), Fully Booked (Dubai), the Singapore Art Book Fair and over 100 exhibiting publishers and artists.

Sticky Institute returns with the Australian Zine Library – an exciting display of the work of over 200 zine makers. Atomic Activity Books showcase the Library of Nonhuman Books involving a series of publications designed by an artificial intelligence after reading physical books. Purchase these books via a vending machine installed by the artist-duo. Ladies of Leisure bring you Friendship Speed Dating, a rapid-fire new pal making session designed to break down social awkwardness and discuss like-minded creative interests. See [ngvartbookfair.com](http://ngvartbookfair.com) for the full program.



## SYMPOSIUM: THE NEW NORMAL: THE CITY AS SYNTHETIC CINEMA

Presented by Melbourne Art Book Fair and Strelka Institute for Media, Architecture and Design, Moscow

**THU 12 MAR, 1–5PM**

Symposium: The New Normal invites a conversation around the City as Synthetic Cinema. Speakers include Amsterdam based collective Metahaven working between filmmaking, writing and design; speculative architect and director Liam Young; Nashin Mahtani, Director of PetaBencana.id; and Strelka Institute's Varvara Melnikova, Nicolay Boyadjiev and Olga Tenisheva.

**Cost** \$45 NGV Member / \$55 Adult /

\$50 Concession, bookings required

**Venue** Clemenger BBDO Auditorium, Ground Level, NGV International, 180 St Kilda Rd, Melbourne

## THE CORNISH FAMILY PRIZE FOR ART AND DESIGN PUBLISHING

Prize announced 13 Mar

The Cornish Family Prize for Art and Design Publishing is the most significant prize of its kind, and the first in the Asia-Pacific region to recognise the book in its entirety, aiming to acknowledge publishing as a key critical practice around the world and support innovation in the field. The NGV sincerely thanks the Cornish Family for their outstanding support of this important prize.



## ACTIVATION: PIRATE RADIO

Presented by Liquid Architecture, De Player, Ben Landau, Field Theory and The Good Copy  
**FRI 13 MAR, 6–10PM, SAT 14 & SUN 15 MAR, 9.30AM–5PM**

Turn on and tune in, Melbourne. NGV hosts Pirate Radio, a weekend broadcast from the Melbourne Art Book Fair with readings, reviews, music, a cavalcade of literati drop-ins, and banter with passing trade. Melbourne sound studio Liquid Architecture and Rotterdam's De Player greets guests with performances at NGV Friday Nights; Artists Ben Landau, Jalen Lyle-Holmes and Sarah Walker interact with gallery visitors in the morning; Field Theory takes the mic on Saturday with its gonzo book club; The Good Copy hosts Sunday's programming with a tell-a-thon about the art of writing. Visit the NGV International forecourt or stream the antics via [ngv.melbourne](http://ngv.melbourne)

**FREE**

**Venue** Forecourt, NGV International, 180 St Kilda Rd, Melbourne



## ACTIVATION: KIDS' OWN ART BOOKS

Presented by Kids' Own Publishing  
**FRI 13 – SUN 15 MAR, 10AM–5PM**

Kids' Own Publishing, along with guest artists, will host a space in which children and families can be immersed in the art of bookmaking, the craft of producing an art book and the democratic and performative act of publishing. Melbourne artist Michael Camilleri is in charge.

**FREE**

**Venue** Great Hall, NGV International, 180 St Kilda Rd, Melbourne

(opposite) The New Normal Symposium, 2019, Strelka Institute for Media, Architecture and Design, image credit Dmitry Smirnov.  
(left to right) The Field Theory participating in their Endless Romantica Endurance Broadcast event, 2018, The Field Theory, image credit Bryony Jackson; Bookmaking workshop, 2019, Kids' Own Publishing, image credit Abbotsford Convent Foundation.



### DEBBIE MILLMAN: COURAGE VS CONFIDENCE

Presented by Creative Women's Circle

**SUN 15 MAR, 5–7.30PM**

Sometimes finding the confidence in yourself to take the next step in life is daunting. Debbie Millman, design expert and host of the podcast *Design Matters*, champions the idea of shaping one's own definition of success through focussing on courage rather than confidence. 'Courage is the foundation for authentic confidence', Millman says. 'Taking the first step creates courage which will grow with every repetitive step you take.' In this presentation, Millman speaks about how she has intentionally shaped her life to fit her personal definition of success. Debbie Millman will be signing copies of her books after the presentation.

**Cost** \$40 Adult + booking fee, bookings required

**Venue** Clemenger BBDO Auditorium, Ground Level, NGV International, 180 St Kilda Rd, Melbourne

### SPEAKER

Debbie Millman is a designer, author, educator, curator and host of the podcast *Design Matters*. In her role as host, Millman has interviewed nearly 500 artists, designers and cultural commentators over the show's fourteen-year history. In 2011 *Design Matters* won the Cooper Hewitt National Design Award and in 2015 Apple named it one of the best overall podcasts on iTunes. Millman has authored six books, including *How to Think Like a Great Graphic Designer*, and is currently working on a new book titled *Why Design Matters*, to be published by HarperCollins in 2020. Her illustrations have been published in *The New York Times*, *New York Magazine*, *Design Observer* and *Fast Company*. Millman is the President Emeritus of AIGA and is one of only five women to hold the position in the organisation's 100-year history.

(above) Photo: John Madere Photography



### PHILIPPE BLOCK: THE FUTURE MASTER BUILDER

Presented by Melbourne School of Design

**MON 16 MAR, 7–8PM**

As construction methods are increasingly understood to be one of the key drivers of climate change, Philippe Block and his team at ETH Zurich are experimenting with new materials, geometry, and digital design and fabrication to shape the future. In this lecture, Block talks about the role of the future master builder in this complex world.

**FREE** bookings required

**Venue** B117 Theatre, Melbourne School of Design, University of Melbourne, Masson Rd, Parkville

This event is made possible by the Treseder Fellowship.

(above) Philippe Block. Photo: Juney Lee

### SPEAKER

Philippe Block is Professor at the Institute of Technology in Architecture at ETH Zurich, where he co-directs the Block Research Group (BRG) together with Dr Tom Van Mele. He is director of the Swiss National Centre of Competence in Research (NCCR) in Digital Fabrication, and founding partner of Ochsendorf DeJong & Block (ODB Engineering). Block's multi-disciplinary research interests span graphical design and analysis techniques, computational form finding and optimisation, structural and architectural geometry, digital fabrication and appropriate construction.



## MELBOURNE DESIGN WEEK AT MERCEDES ME

Responding to the 2020 Melbourne Design Week provocation, 'How can design shape life?' these thought-provoking evening talks explore design from different perspectives – set within the award-winning interior of the Mercedes me Store Melbourne.

MAJOR PARTNER



## 2020 MELBOURNE DESIGN WEEK AWARD

Mercedes-Benz and the National Gallery of Victoria are pleased to present the inaugural Melbourne Design Week Award, which will recognise the outstanding contributions of a participating designer or presentation to the 2020 Melbourne Design Week conversation. Throughout Melbourne Design Week a group of selectors, including Oli Stratford, Editor in Chief of Disegno (UK), NGV curators Ewan McEoin and Simone LeAmon, and Timothy Moore, Curator, Melbourne Design Week will be on the search for the stand-out exhibition, event, object or presentation that adeptly responds to the provocation, 'How can design shape life?' The prize, a Mercedes-Benz Design Experience in Stuttgart, Germany will be announced and presented at the close of Melbourne Design Week at the award-winning Mercedes me Store Melbourne.

### NEW MOBILITY

Presented by Mercedes-Benz and NGV  
**MON 16 MAR, 6.30–8PM**

Join Mercedes-Benz experts for a thought-provoking conversation examining the constantly evolving and ground-breaking world of automotive design. At the cutting edge of car design, performance, wellbeing, safety and innovation must converge and deliver. But how are cars designed today and what are the primary motivations, needs and prompts that inform and stimulate the design agenda?

**Venue** Mercedes me, 525 Collins St, Melbourne  
**Cost** \$10 NGV Member / \$12 Adult, price includes a welcome drink and grazing table on arrival, bookings required

### THE SHAPE OF THINGS TO COME

Presented by Mercedes-Benz and NGV  
**THU 19 MAR, 6.30–8PM**

Join Alice Blackwood, editor, journalist and communications strategist, as she brings together a panel of experimental designers working at the intersection of design, biology and science. As design shapes the world around us, this event will reveal the exciting potential of design and material ecology to turn problems into solutions.

**Venue** Mercedes me, 525 Collins St, Melbourne  
**Cost** \$10 NGV Member / \$12 Adult, price includes a welcome drink and grazing table on arrival, bookings required

(above) Mercedes me x Melbourne Design Week 2019. Photo: Tobais Titz

## WATERFRONT

The waterways of Melbourne and Victoria are under increasing pressure, including from rapid urban development, extreme weather and invasive species. Created by Open House Melbourne, this theme explores the role that design plays in framing our relationship with water. Join in on boat tours, walks, bike rides, talks and special events that champion the cultural, ecological and recreational value of Victoria's rivers, bays and oceans.



Environment,  
Land, Water  
and Planning

This program is supported by the Victorian Design Program, an initiative of the Victorian Government and Program Partner Liveability Victoria International | Department of Environment, Land, Water and Planning.

(background image) Image courtesy of Melbourne Water

### OCEAN OSMOSIS: DESAL TOUR

Presented by Open House Melbourne and Watersure

**SAT 14 MAR, 10AM–12PM, 12–2M & 2–4PM**

Visit the Victorian Desalination Project, home to the largest green roof in the southern hemisphere and capable of providing 150 billion litres of water to Melbourne a year.

**FREE** bookings required

**Venue** Victorian Desalination Plant, 400 Lower Powlett Rd, Wonthaggi



### FORGOTTEN ECOLOGIES OF BIRRARUNG

Presented by Open House Melbourne and Melbourne Architours

**SAT 14 MAR, 10AM–1PM**

Explore the oft-forgotten ecologies of Birrarung (Yarra River), stopping along the way for conversations about the river's future.

**Cost** \$35, bookings required

**Venue** 154 Alexandra Ave, South Yarra



### DEEP DIVE: SEA URCHIN SNORKEL TOUR

Presented by Open House Melbourne

**SAT 14 MAR, 10.30AM–12.30PM**

Deep Dive is a snorkel tour in Port Phillip Bay with Dr. Pirjo Haikola that reveals the exploding population of sea urchins living below the surface of the bay.

**FREE** bookings required

**Venue** Port Phillip Bay, see [openhousemelbourne.org](http://openhousemelbourne.org) for details



### HYBRID COASTAL DEFENCE

Presented by Open House Melbourne, National Centre for Coasts and Climate and Reef Design Lab

**SUN 22 MAR, 10AM–12PM**

Discover how design and sustainable methods are used to protect coastal communities from erosion on this tour.

**FREE** bookings required

**Venue** Altona

Departure times according to tides, see [openhousemelbourne.org](http://openhousemelbourne.org) for details

(top to bottom) Image courtesy of Open House Melbourne; Photo: Pirjo Haikola; Photo: Alex Goad (opposite) Photo: George Apostolidis

PROGRAM HIGHLIGHTS

RIVER RIGHTS: YARRA BEND

Presented by Open House Melbourne and the Yarra Riverkeeper Association  
**SAT 14 MAR, 11AM–1PM**  
A river ramble exploring waterfront access, development and the river as public space.  
**FREE** bookings required  
**Venue** Meet at Dights Falls Reserve Car Park, off Trenerry Cr, Clifton Hill



PROTECTING URBAN WATERWAYS

Presented by Open House Melbourne and the Yarra Riverkeeper Association  
**SUN 15 MAR, 10AM–12PM**  
Hear a discussion about urban water advocacy onboard a boat.  
**Cost** \$10, bookings required  
**Venue** Meet at Federation Wharf, 15–19 Princes Walk, Melbourne



THE WESTERN TREATMENT PLANT

Presented by Open House Melbourne and Melbourne Water  
**WED 18 MAR, 10AM–12PM & 1–3PM**  
Much more than a ‘poo farm’, the Western Treatment plant is a place of historic, environmental and cultural significance. Join Open House Melbourne and Melbourne Water for a two-hour bus tour to the plant.  
**FREE** bookings required  
**Venue** Melbourne Water Discovery Centre, Lot 1, New Farm Rd, Werribee



(top to bottom) Image courtesy of Yarra Riverkeeper Association; Image courtesy of Open House Melbourne; Image courtesy of Melbourne Water.  
(opposite) Image courtesy of Melbourne Water

FROM POOP TO PARK

Presented by Open House Melbourne and Melbourne Water  
**TUE 17 MAR, 10AM–12PM**  
This tour will explore how transforming a decommissioned sewer may enhance community wellbeing.  
**FREE** bookings required  
**Venue** Meet at cnr Lukis Ave and McLachlan Dr, Williams Landing





**WATER REGIMES OF BOLIN BOLIN:  
PAST, PRESENT AND FUTURE**

Presented by Open House Melbourne  
and Melbourne Water

**TUE 17 MAR, 10AM–12PM**

Hear how the Bolin Bolin Billabong is being  
rehabilitated for future generations on a tour  
of the ancient site along Birrarung (Yarra River).

**FREE** bookings required

**Venue** 191 Bulleen Rd, Bulleen

**WATERING THE GARDENS**

Presented by Open House Melbourne and  
Royal Botanic Gardens Victoria

**FRI 20 MAR, 5–7PM & SAT 21 MAR, 4–6PM**

This event is a guided tour around the gardens and  
on the lake exploring water conservation in the city's  
Royal Botanic Gardens.

**Cost** \$30, bookings required

**Venue** Meet at Gate C, Royal Botanic Gardens  
Victoria, Melbourne Gardens, Anderson St,  
South Yarra



(top to bottom) Smoking Ceremony held at Bolin Bolin Billabong. Image courtesy of Open House Melbourne; Photo: Adrian Vittorio



**GREENING SEAWALLS**

Presented by Open House Melbourne, Reef Design  
Lab and Sydney Institute of Marine Science

**SAT 21 MAR, 10AM–12PM**

This boat tour features a discussion about creating  
coastal habitat infrastructure and artificial reefs.

**Cost** \$10, bookings required

**Venue** Meet at Federation Wharf,  
15–19 Princes Walk, Melbourne



**I'M ON A (PORT OF MELBOURNE) BOAT!**

Presented by Open House Melbourne and  
Port of Melbourne

**SUN 22 MAR, 10–10.45AM, 11–11.45AM, 12–12.45PM,  
1–1.45PM, 2–2.45PM & 3–3.45PM**

Step aboard and see Australia's busiest port from a  
whole new angle.

**Cost** \$5.50, bookings required

**Venue** 55 Victoria Harbour Prom, Docklands



**FINDING THE RIVER: LIVING WITH WATER**

Presented by Open House Melbourne and  
Jane's Walk

**SUN 22 MAR, 2–3.30PM**

This walk for World Water Day, from Montague  
(Fishermans Bend) to Birrarung (Yarra River),  
explores the theme of water in the landscape.

**FREE** bookings required

**Venue** Fishermans Bend,  
see [openhousemelbourne.org](http://openhousemelbourne.org) for details

(top to bottom) Image courtesy of Open House Melbourne; Photo: J Withers; Image courtesy of Jane's Walk Melbourne



# MELBOURNE DESIGN WEEK FILM FESTIVAL

# MELBOURNE DESIGN WEEK FILM FESTIVAL

The Melbourne Design Week Film Festival traverses the globe with films that project environments, cities, infrastructures and buildings, and the people that design and inhabit them. Eleven feature films are accompanied by two design short-film programs with new shorts dealing with the challenges facing architects and designers. The program expands from the cinema to Melbourne's public spaces with experimental architecture short-film program Urban Screening at Federation Square (Melbourne), Harmony Square (Dandenong) and Monash University (Clayton and Caulfield).

All feature films are screening at:

**Lido Cinemas**

675 Glenferrie Rd, Hawthorn

**Classic Cinemas**

9 Gordon St, Elsternwick

**Cost** \$18.50 NGV Member and Concession / \$22 Adult, bookings required

**See [designweek.melbourne](http://designweek.melbourne) for bookings**

Presented in association with the Lido & Classic Cinemas.  
Melbourne Design Week Film Festival curated by Richard Sowada.

**PUSH**

**LIDO: SUN 15 MAR, 4PM & WED 18 MAR, 7PM**

**CLASSIC: FRI 13 MAR & SAT 21 MAR, 7PM**

*Push* is a new documentary from award-winning director Fredrik Gertten investigating why we can't afford to live in many cities anymore.

**Director** Fredrik Gertten, 2018, Sweden, 76 min



**ANTHROPOCENE: THE HUMAN EPOCH**

**LIDO: SAT 14 & FRI 20 MAR, 7PM**

**CLASSIC: SUN 15 & THU 19 MAR, 7PM**

The third in Baichwal and Burtynsky's epic environmental trilogy, *Anthropocene* is both magnificent in scope and frightening in subject as it explores human influence on earth.

**Director** Jennifer Baichwal, Edward Burtynsky, 2019, Canada, 87 min



**PALACE FOR THE PEOPLE**

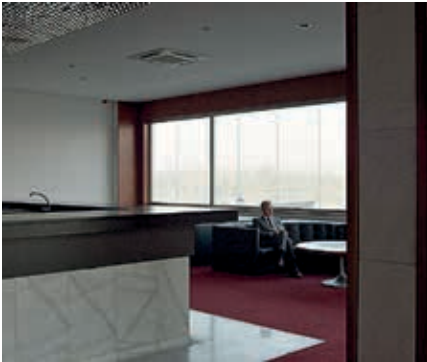
Australian Premiere

**LIDO: FRI 13 & SUN 22 MAR, 7PM**

**CLASSIC: SAT 14 MAR, 7PM**

*Palace for the People* tells the stories of five emblematic buildings of socialist times: The National Palace of Culture in Sofia, Moscow State University, the Palace of the Parliament in Bucharest, the Palace of Serbia in Belgrade, and the Palace of the Republic in Berlin.

**Director** Georgi Bogdanov, Boris Missirkov, 2018, Bulgaria/Germany/Romania, 76 min



**HOTEL YUGOSLAVIJA**

Australian Premiere

**LIDO: WED 18 & SAT 21 MAR, 2PM**

**CLASSIC: SUN 15 MAR, 2PM**

Erected in Novi Belgrade in 1969, the Hotel Jugoslavija was a mythical place: both a symbol and a witness to the different moments that shaped former Yugoslavia.

**Director** Nicholas Wagnieres, 2018, France/Serbia, 78 min



**GATEWAYS TO NEW YORK**

Australian Premiere

**LIDO: SUN 15 & FRI 20 MAR, 2PM**

**CLASSIC: MON 16 & SUN 22 MAR, 7PM**

*Gateways to New York* is a story about the great Swiss structural engineer Othmar Hermann Amman who emigrated to New York in 1904 to redefine the art of bridge building in America.

**Director** Martin Witz, 2019, Switzerland, 88 min

(top to bottom) *Push*. Photo: Fredrik Gertten; *Anthropocene*, Photo: Edward Burtynsky

(top to bottom) *Palace For The People*. Photo: Georgi Bogdanov; *Hotel Yugoslavia*. Photo: Nicholas Wagnieres; *Gateways to New York*. Image Courtesy: Martin Witz

### IN ART WE TRUST

Australian Premiere

**LIDO: SUN 15 MAR, 7PM & SUN 22 MAR, 2PM**

**CLASSIC: SAT 14 MAR, 4PM & FRI 20 MAR, 2PM**

*In Art We Trust* tells the course of an artist today, from their beginnings to the end of their professional life. It is a living, playful and moving allegory on the figure of the artist in contemporary society.

**Director** Benoit Rossel, 2017, Switzerland/France, 75 min



### MANY UNDULATING THINGS

Australian Premiere

**LIDO: SAT 14 & SAT 21 MAR, 4PM**

**CLASSIC: WED 18 MAR, 2PM & SUN 22 MAR, 4PM**

An ode to Hong Kong: a complex reflection on its relationship between landscape, nature, urbanisation and society.

**Director** Bo Wang, Pan Lu, 2019, US/South Korea/Hong Kong/China, 125 min



### THE NEW BAUHAUS

Australian Premiere

**LIDO: TUE 17 MAR, 7PM & SUN 22 MAR, 4PM**

**CLASSIC: FRI 20, 7PM & SAT 21 MAR, 4PM**

Then radical Hungarian artist László Moholy-Nagy moved to Chicago in 1937 where he spearheaded The New Bauhaus, a movement descended from the famous German school.

**Director** Petter Ringbm, Erin Wright, Alys Nahmias, 2019, USA, 89 min



### EARTH (ERDE)

Australian Premiere

**LIDO: THU 19 & SAT 21 MAR, 7PM**

**CLASSIC: SUN 15 MAR, 4PM & WED 18 MAR, 7PM**

*Earth* is a portrait of the planet at seven locations that humans have transformed on a grand scale.

**Director** Nikolaus Geyrhalter, 2019, Austria, 115 min

### THE HIDDEN CITY

**LIDO: SAT 14 MAR, 2PM**

**CLASSIC: TUE 17 MAR, 7PM & SAT 21 MAR, 2PM**

This descent into the visceral depths of a European city through the vast labyrinth of tunnels, sewage pipes and subway stations forms an immense web on which the city rests and depends.

**Director** Victor Moreno, 2018, Spain/France/Germany, 80 min

### RABOT

Australian Premiere

**LIDO: MON 16 MAR, 7PM**

**CLASSIC: SAT 14 MAR & SUN 22 MAR, 2PM**

*Rabot* tells the poetic and moving story of a social housing block on the brink of demolition.

**Director** Christina Vandekerckhove, 2017, Belgium, 95 min



# INTERNATIONAL DESIGN SHORT FILMS PROGRAM

**PROGRAM 1:**  
**SAT 14 MAR & SAT 21 MAR, 11AM–12PM**

**PROGRAM 2:**  
**SAT 14 MAR & SAT 21 MAR, 3–4PM**

Two special programs showcase brand new international short films dealing with the challenges facing architects and designers, and the people who inhabit and use their designs. A different screening of short films will be presented each Saturday during Melbourne Design Week.

**FREE** bookings required

**Venue** NGV Australia Theatre, Ground Level, The Ian Potter Centre: NGV Australia, Federation Square, cnr Flinders St and Russell St, Melbourne

## PROGRAM 1:

### THE LOWLINE LAB

Under the streets of New York's Lower East Side lies a new project straight out of science fiction: a former trolley terminal is in the process of being turned into the world's first underground park.

**Director** Peter Ringbottom, 2017, 3 min

### WHAT IT TAKES TO MAKE A HOME

What does it mean to live in the city without a place you can call your own? What role can architects have in addressing homelessness? And how can cities become a better home for all?

**Director** Daniel Schwartz with support from CCA, 2019, 28 min

### PACIFIC

Looming twenty-five storeys high, an apartment building in Brussels is known colloquially as the 'Suicide Tower' after a rash of jumping deaths. With an elegant and subtle survey of her neighbours' reactions, filmmaker and resident Angie Obeid shows how a building can manifest its inhabitants' loneliness and fear of the other into something deadly.

**Director** Angie Obeid, 2019, 23 min



## PROGRAM 2:

### ARCHIPAPER – A SURREALIST STORY ABOUT ARCHITECTURE

*ArchiPaper* is a short animated film that tells a story about architecture in an unconventional way. The basis and starting point for this work was a physical model of a house designed by BXB Studio.

**Director** Rafał Barnaś, 2019, 4 min

### SCENES FROM A DRY CITY

Cape Town is closing in on 'Day Zero' when citizens' taps will run dry. Part biblical disaster, part Thunderdome anarchy, this is what a world without water looks like.

**Director** François Verster, Simon Wood, 2019, 13 min

### CONCRETE NATURE: THE PLANETARY SAND BANK

This film explores concrete buildings that were politicised before they were constructed, before an architect lent them their particular voice; buildings whose political speech is now being overwritten, rewritten, and erased, by the shifting sands of ideology and environment.

**Director** Rikke Luther, 2019, 38 min

(above) Photo: Sophie Couture

(above) ArchiPaper. Image courtesy of Richard Sowada

---

### URBAN SCREENING

---

Presented by Australian Institute of Architects:  
Emerging Architects and Graduate Network, UWA  
and Australian Urban Design Research Centre

**12–22 MAR, 10AM & 2PM DAILY**

**FEDERATION SQUARE AND HARMONY SQUARE**

**12–22 MAR, MON–FRI, 10AM & 2PM**

**MONASH UNIVERSITY**

The impacts of screens, surveillance and mixed-realities upon the experience and imagination of cities.

**FREE**

#### **Venues**

Harmony Square,  
Lonsdale Street Centre, Dandenong;

Federation Square,  
cnr Swanston St and Flinders St, Melbourne;

Monash University Public Screens, Northern Plaza,  
Clayton Campus, Wellington Rd, Clayton;

Caulfield Plaza, Caulfield Campus,  
900 Dandenong Rd, Caulfield East

(background image) Urban Screening. Image courtesy of Rob Cameron



# EXHIBITIONS

Melbourne's many showrooms, ateliers, galleries, museums and temporary spaces host exhibitions that broadly explore how design shapes life.

See [designweek.melbourne](http://designweek.melbourne) for bookings.

### 25 QUESTIONS FOR A LIVEABLE CITY

Presented by Arup

**12–19 MAR, 10AM–4PM DAILY**

A participatory exhibition poses 25 questions about how we feel about the technologies shaping the city.

**FREE**

**Venue** The Atrium, Federation Square, cnr Flinders St and Russell St, Melbourne



### A&A: EXQUISITE CORPSE/CADAVRE EXQUIS

Presented by Tolarno Galleries

**12–22 MAR, TUE–FRI, 10AM–5PM & SAT, 1–5PM**

**OPENING: SAT 14 MAR, 2PM**

The debut exhibition from A&A, by industrial designer Adam Goodrum and straw marquetry artisan Arthur Seigneur, presents three new and unique design pieces.

**FREE**

**Venue** Tolarno Galleries, Level 4, 104 Exhibition St, Melbourne



### ALUMINATE: LIGHTS BY MXC PROJECT

Presented by NOMIT

**12–22 MAR, 24 HRS DAILY**

**OPENING: THU 19 MAR, 6–8PM**

*Aluminate* is a light exhibition that rethinks designing for the environment by exploring the dichotomy of beauty and waste.

**FREE**

**Venue** DiMase Architects, 342 St Georges Rd, North Fitzroy



### ATMOSPHERE: A REVIVAL

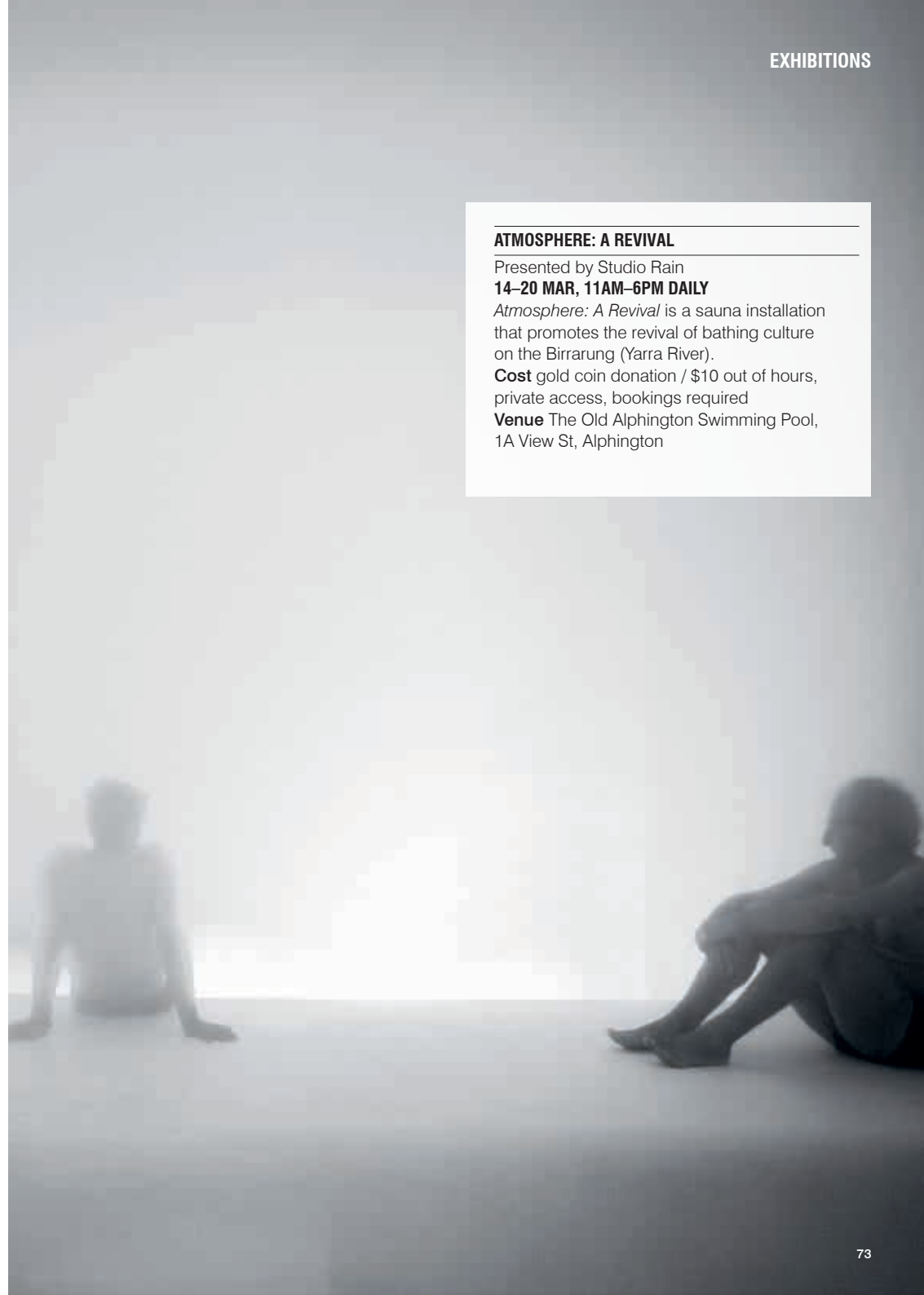
Presented by Studio Rain

**14–20 MAR, 11AM–6PM DAILY**

*Atmosphere: A Revival* is a sauna installation that promotes the revival of bathing culture on the Birrarung (Yarra River).

**Cost** gold coin donation / \$10 out of hours, private access, bookings required

**Venue** The Old Alphington Swimming Pool, 1A View St, Alphington





### BLACK BAMBOO: CONTEMPORARY FURNITURE DESIGN FROM MER, TORRES STRAIT

Presented by NGV

**12–22 MAR, 10AM–5PM DAILY**

*Black Bamboo* is a presentation of contemporary bamboo furniture designed and made by eighteen artists from Mer (Murray Island), Torres Strait. The collection of cabinets, seating and cushions was produced during a three-week

workshop on Mer with the support of Melbourne furniture designer and craftsman Damien Wright, and the workshop team, including curators from the NGV, Cairns Art Gallery, Gab Titui Cultural Centre and the Mer Gedkem Le (Torres Strait Islanders) Corporation RNTBC.

**FREE**

**Venue** Level 2, The Ian Potter Centre: NGV Australia, Federation Square, cnr Flinders St and Russell St, Melbourne



### AURUM

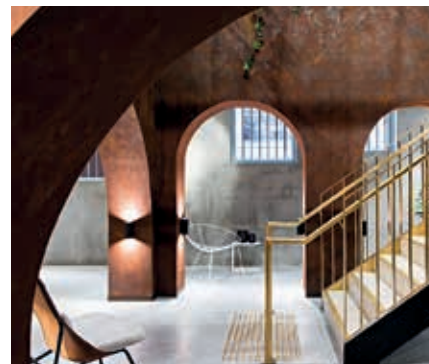
Presented by Georgia Nowak and Eugene Pereplechikov

**SAT 14 MAR, 11AM–6PM & SUN 15 MAR, 11AM–5PM**

*Aurum* is a moving-image installation that examines the complex relationship of humans with gold, and its power to transform societies.

**FREE**

**Venue** ANZ Gothic Bank, 388 Collins St, Melbourne (corner Collins and Queens Streets)



### AUSTRALIAN FURNITURE DESIGN AWARD 2020 EXHIBITION

Presented by NGV and Stylecraft

**12–20 MAR, MON–FRI, 8.30AM–5PM & SAT, 10AM–4PM**

The finalists for the 2020 Australian Furniture Design Award will be exhibited in the Stylecraft Melbourne showroom during Melbourne Design Week.

**FREE**

**Venue** Stylecraft, 145 Flinders Ln, Melbourne



### BLOCKS

Presented by James Walsh and Saint Francis Place

**12–22 MAR, MON–FRI, 10AM–6PM, SAT 10AM–5PM & SUN, 11AM–5PM**

**CLOSING PARTY: SUN 22 MAR, 6–8PM**

Designer James Walsh gives new life to an age-old process with the assistance of modern techniques in the precision manufacture of terracotta objects.

**FREE**

**Venue** 63 Smith St, Fitzroy



### BIOCITIES: BIOMELBOURNE

Presented by Ollie Cotsaftis and Co. and RMIT School of Design

**12–21 MAR, WED–SAT, 12–6PM**

**OPENING: THU 12 MAR, 6–10PM**

What does our city say about us? *BioCities: Bio-Melbourne* investigates points of departure in the way we think, design and live within future urban systems.

**FREE**

**Venue** Neon Parc City, 1/53 Bourke St, Melbourne

**CODE BLACK COFFEE**

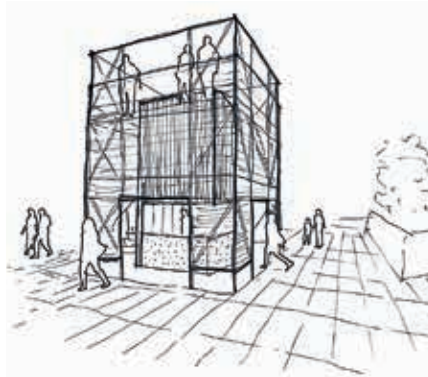
Presented by Zwei Interiors Architecture, Code Black Coffee and Four Seasons Commercial Interiors

**12–22 MAR, 7AM–4PM DAILY**

Code Black Coffee explores how the design of both the structure and systems behind a coffee outlet can support a circular economy, change behaviour and lead to better sustainable outcomes.

**FREE**

**Venue** Queensbridge Square, 3 Queens Bridge St, Southbank

**COLLECTING COMME**

Presented by NGV

**12–22 MAR, 10AM–5PM DAILY**

Rei Kawakubo of Comme des Garçons is one of the most visionary and influential fashion designers working today. This exhibition examines the radical concepts and design methods that have informed her practice since 1981, with more than fifty garments generously gifted to the Gallery by Takamasa Takahashi plus additional loans from his archive.

**FREE**

**Venue** Level 3, NGV International, 180 St Kilda Rd, Melbourne

**COUNTERFACTUAL CITY SERIES**

RMIT School of Architecture and Urban Design

**PUBLIC POSTERS: 12–22 MAR, 24 HRS DAILY**

**EXHIBITION: 12–20 MAR, MON–FRI, 9AM–5PM**

The *Counterfactual City Series* presents visions for public sites displayed as street posters erected around the city.

**FREE**

**Venue** RMIT Design Hub, Level 3 Foyer, Building 100, Victoria St, Carlton

**DAYDREAM**

Presented by Yan design studio, Design by Storm and Technē Architecture and Interior Design

**20–22 MAR, FRI–SUN, 11AM–5PM**

**OPENING: FRI 20 MAR, 6–8PM**

*Daydream* is a collaborative installation that facilitates meditating, recharging, and rediscovering the creativity sapped by modern lifestyles.

**FREE**

**Venue** 1 Elliott Pl, Carlton. Entry via rear of 29/31 Rathdowne St

**DESIGN UNWIND**

Presented by TSAR Carpets x Byzantine Design x Arthur G

**12–21 MAR, MON–FRI, 9AM–5.30PM**

**& SAT, 10AM–4PM**

In response to the profound effects of the built environment on our wellbeing, *Design Unwind* offers a peaceful reprieve from modern life through the application of mood-enhancing design principles.

**FREE** bookings required

**Venue** Tsar Carpets, 250 High St, Windsor

**DESIGNWORK 04: DALE HARDIMAN AND STEPHEN ROYCE | DANIELLE BRUSTMAN**

Presented by Sophie Gannon Gallery

**12–22 MAR, TUE–SAT, 11AM–5PM**

**OPENING: SAT 14 MAR, 3PM**

*Designwork 04* features presentations by Melbourne-based designers Dale Hardiman in collaboration with Stephen Royce exploring light through common handheld devices, and Danielle Brustman encompassing interior, furniture, lighting and object design.

**FREE**

**Venue** Sophie Gannon Gallery, 2 Albert St, Richmond

**DOUBLE ADAPTOR**

Presented by MARS Gallery

**12–21 MAR, TUE–SAT, 10AM–5PM****OPENING: FRI 13 MAR, 6–8PM**

*Double Adaptor* examines the relationship between the creation of desire for new products, in-built obsolescence in technology and fashion, and increasing awareness, value-signaling and branding around ethical design and sustainability.

**FREE****Venue** 7 James St, Windsor**EMPATHY: A DESIGN CHALLENGE EXHIBITION**

Presented by The Gordon (TAFE): Graphic Design

**12–22 MAR, 9AM–6PM DAILY**

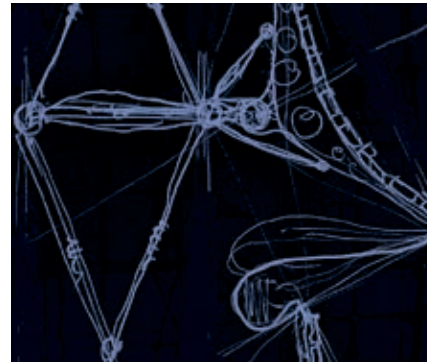
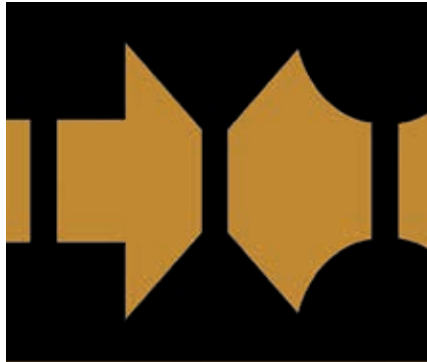
**OPENING: THU 12 MAR, 5.30PM**, bookings required  
*Empathy* is a statewide vocational media, art and design student exhibition addressing the importance of the initial step in the design process.

**FREE****Venue** The Gordon Gallery, cnr Gordon Ave and Fenwick St, Geelong**DUCTILITY**

Presented by alt. material

**16–22 MAR, MON–FRI, 10AM–6PM****& SAT–SUN, 10–4PM****OPENING: THU 19 MAR, 6–9PM**, bookings required

The alt.material collective presents its third group exhibition of contemporary design, titled *Ductility*.

**FREE****Venue** 408 Smith St, Collingwood**EVOLUTION**

Presented by Grimshaw

**12–22 MAR, MON–FRI, 10AM–8PM****& SAT–SUN, 10AM–5PM**

*Evolution* is an exhibition from international architecture practice Grimshaw showcasing a range of projects from across the world, from Eden Project in the UK and Dubai Expo 2020's Sustainability Pavilion, through to a variety of contemporary Australian projects.

**FREE****Venue** KSR Art Bar, Ground Level, Rialto Piazza, 525 Collins St, Melbourne**ELEGY**

Presented by Gallery Funaki

**12–22 MAR, MON–FRI, 10.30AM–5PM & SAT, 12–4PM****OPENING: THU 12 MAR, 6PM**

*Elegy* includes works by thirteen Australian designers who face the grief they hold for the world head-on in order to explore how it may be carried meaningfully.

**FREE****Venue** Gallery Funaki, 4 Crossley St, Melbourne**FROM THE RUBBLE**

Presented by Caitlyn Parry and Sean Guy

**21–22 MAR, 10AM–4PM DAILY**

*From the Rubble* turns construction-site waste into an architectural folly using augmented reality.

**FREE****Venue** Warehouse 1, 19–21 Johnston St, Collingwood

### FUTURE PROTOTYPING

Presented by Melbourne School of Design

**12–22 MAR, 10AM–5PM DAILY**

The exhibition examines the role of prototypes in design and how they transform ideas into a reality that shape our lives.

**FREE**

**Venue** Dulux Gallery, Ground Level, Melbourne School of Design Building, Masson Rd, Parkville



### GENDER IN OUR CITIES: RESHAPING OUR WORLD

Presented by Portable and Our Community House

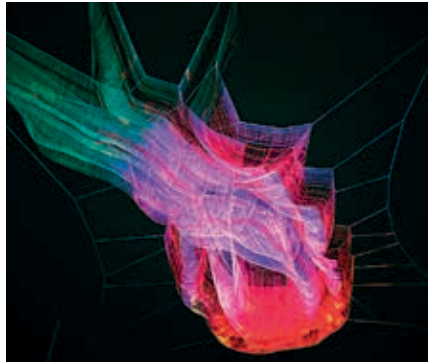
**17–20 MAR, 9AM–5PM DAILY**

**OPENING: TUE 17 MAR, 6PM**

*Gender in Our Cities* is an experimental, participatory exhibition that builds collective awareness of gender inequality, and empowers people on a journey of reimagining their world.

**FREE** bookings required

**Venue** 552 Victoria St, North Melbourne



### IN THE STREETS AND ON THE WALLS: PROVOCATIONS FOR BRUNSWICK DESIGN DISTRICT

Presented by Millie Cattlin, Mark Jacques and Katherine Sundermann in collaboration with Sean Hogan

**17–21 MAR, 10AM–8PM DAILY**

Poster provocations for Brunswick Design District are presented within the streets of Brunswick.

**FREE**

**Venue** Siteworks, 33 Saxon St, Brunswick



### HOOPS

Presented by NGV

**12–22 MAR, 10AM–5PM DAILY**

NGV design store invited Australian jewellery designers and makers to respond to the Melbourne Design Week 2020 theme 'How can design shape life?' to interpret, develop and submit a design for a pair of hoop earrings. The series is on display and available for purchase at NGV design store.

**FREE**

**Venue** NGV design store, Ground Level, NGV International, 180 St Kilda Rd, Melbourne

### IN ABSENCE: YHONNIE SCARCE AND EDITION OFFICE

Presented by NGV

**12–22 MAR, 10AM–5PM DAILY**

The 5th annual NGV Architecture Commission *In Absence* is a collaboration between contemporary artist and Kokatha and Nukunu woman Yhonnie Scarce and Melbourne architecture studio Edition Office. *In Absence* is an architectural installation that invites audiences to better understand the fallacy of the premise of terra nullius, which declared Australia as an emptiness awaiting ownership, by revealing and celebrating over 3000 generations of Indigenous design, industry and agriculture.

**FREE**

**Venue** Grollo Equiset Garden, NGV International, 180 St Kilda Rd, Melbourne



### JAPANESE DESIGN: NEOLITHIC TO NOW

Presented by NGV

**12–22 MAR, 10AM–5PM DAILY**

Throughout the twentieth and twenty-first centuries, Japan has been admired globally for unique artistic traditions and sophisticated visual design. This NGV Collection exhibition spans more than four thousand years and features Neolithic ceramics, Buddhist sculpture and calligraphy, minimalist medieval furniture, golden screens, theatre costumes, woven bamboo works, exquisitely decorated porcelain and recent creations by leading contemporary fashion and graphic designers.

**FREE**

**Venue** Level 1, NGV International, 180 St Kilda Rd, Melbourne



### JAPANESE MODERNISM

Presented by NGV

**12–22 MAR, 10AM–5PM DAILY**

During the first half of the twentieth century Japan's traditional art and aesthetics interacted with European life and culture, resulting in a pulsating era of Japanese modernism and the creation of Asian Art Deco. The exhibition investigates the increasingly socially liberated status of women and includes major works by young women artists of the era.

**FREE**

**Venue** Level 1, NGV International, 180 St Kilda Rd, Melbourne

The NGV is grateful to the Australia-Japan Foundation for their support of this exhibition.



(top to bottom) Ikko Tanaka 1988 *Hiroshima appeals* 1980s (detail) National Gallery of Victoria, Melbourne. Gift of Jacqui Thomas, 2019 © Ikko Tanaka; Itō Shinsui *Freshly-washed hair (Arai Gami)* 1936 (detail) National Gallery of Victoria, Melbourne. Purchased with funds donated by Allan Myers AO and Maria Myers AO, 2015. © Estate of Itō Shinsui



(top to bottom) Photo: Diana Domonkos; © Confetti Studio; Image courtesy of Mark Richardson

### KULTUR-ALL MAKAAAN

Presented by Punctum Inc. and Loddon Campaspe Multicultural Services

**15–17 MAR, 11AM–5PM DAILY**

**OPENING & ZINDA NIGHT IN THE PARK:**

**SAT 14 MAR, 5PM**

The Kultur-All Makaan is a flatpack, mobile home of art and culture designed and constructed in collaboration with culturally and linguistically diverse artists and artisans in Central Victoria.

**FREE**

**Venue** Rosalind Park, 30 Gaol Rd, Bendigo

### LAUNDROTTO

Presented by Steelotto

**18–20 MAR, 10AM–9PM DAILY**

**OPENING: FRI 13 MAR, 6PM**

Steelotto presents *Laundrotto*, an exhibition in a laundromat that explores the co-existence of both design as art and design as function.

**FREE**

**Venue** My Beautiful Laundrette, 151/153 Brunswick St, Fitzroy

### LIFE AND DEATH

Presented by Friends and Associates

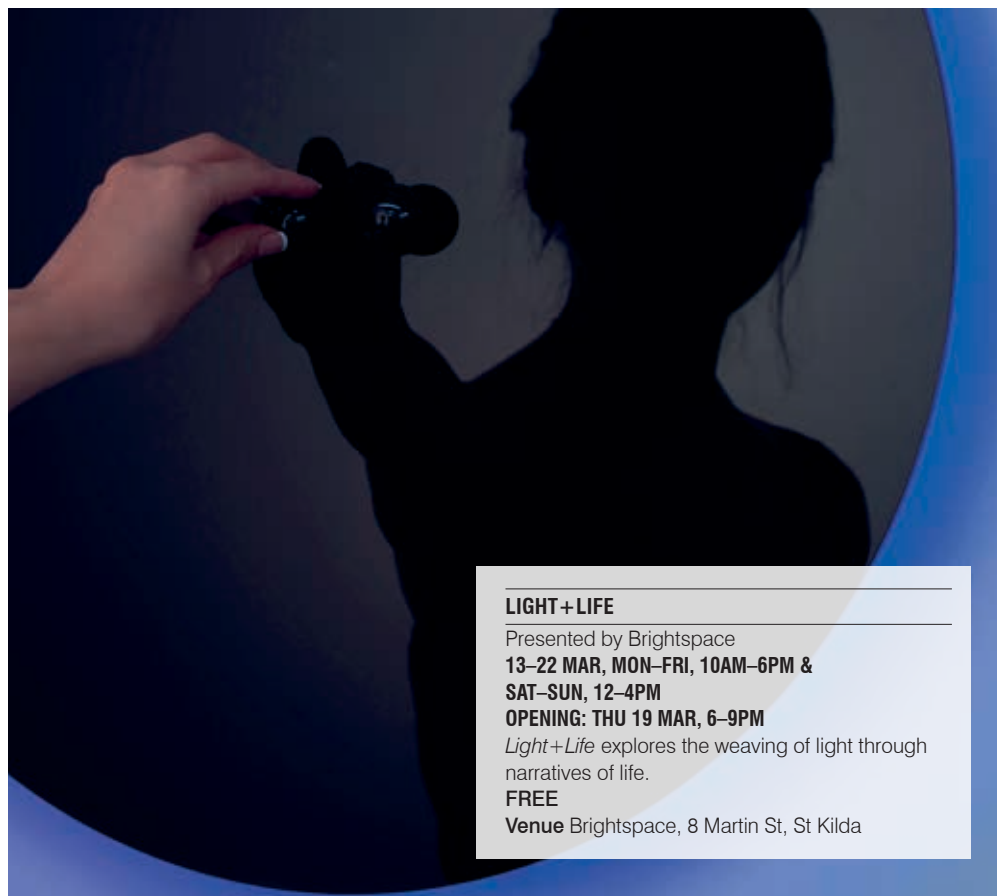
**12–21 MAR, 10AM–5PM**

**OPENING: FRI 13 MAR, 6–10PM**

Urns made from soil, screens made from urine fed bacteria, chandeliers made from cracked phone screens and sending artworks into space: this exhibition presents projects by Australian creative practitioners exploring life and death.

**FREE**

**Venue** Meat Market Stables, 2–8 Wreckyn St, North Melbourne



### LIGHT+LIFE

Presented by Brightspace

**13–22 MAR, MON–FRI, 10AM–6PM &  
SAT–SUN, 12–4PM**

**OPENING: THU 19 MAR, 6–9PM**

*Light+Life* explores the weaving of light through narratives of life.

**FREE**

**Venue** Brightspace, 8 Martin St, St Kilda

### MAKE GOOD: THE FITZROY HOUSING REPAIR ADVISORY SERVICE

Presented by Very Little Architecture

**13–15 MAR, FRI, 6–9PM & SAT–SUN, 10AM–6PM**

*Make Good* is an exhibition revisiting the work of architect-led community service The Fitzroy Housing Repair Advisory Service.

**FREE**

**Venue** Florence Peel Centre Community Space, 190 Young St, Fitzroy



(top to bottom) Photo: Ivan Lee; Image courtesy of Peter Lovell

### LOCAL COLOUR

Presented by Scanlan & Makers

**20–22 MAR, 11AM–6PM**

**OPENING AND Q&A: THU 19 MAR, 6–9PM**

**AFTERNOON TEA: SAT 21 MAR, 2–4PM**, bookings required  
Scanlan & Makers presents *Local Colour*, a project that discovers a contemporary Victorian palette. An afternoon tea with Clare Scanlan and Kate Berry explores slow food and slow colour and is an opportunity to learn new skills in colour-mixing and photography.

**FREE**

**Venue** 98 Rokeby St, Collingwood



(above) Photo: Clare Scanlan

**MATERIALITY: TERRACOTTA**

Presented by Terra Home Objects

**FRI 13 MAR, 10AM–4PM**

This workshop and exhibition explores terracotta's materiality and how we can use those properties to encourage more passive ways of living.

**FREE** bookings required

**Venue** Hoffman Brickworks Kiln No. 1,  
99 Brickworks Dr, Brunswick

**MELBOURNE COOL LINES!**

Presented by Monash Architecture, Cooperative Research  
Centre for Water Sensitive Cities and City of Melbourne

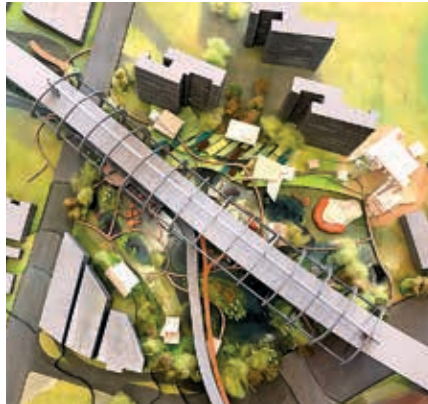
**12–22 MAR, MON–THU, 8AM–8PM, FRI, 8AM–6PM,  
SAT, 10AM–5PM & SUN, 12–5PM**

**OPENING: THU 12 MAR, 5–7.30PM**

This exhibition explores future scenarios for north-west Melbourne through a network of green-blue infrastructures that integrate landscape, architecture and urbanism into new urban ecologies.

**FREE**

**Venue** The Gallery at City Library, City Library,  
253 Flinders Ln, Melbourne

**MICROCULTURES AND MICROPLASTICS: RMIT GLOBAL DESIGN STUDIO**

Presented by RMIT School of Design and London  
College of Communication

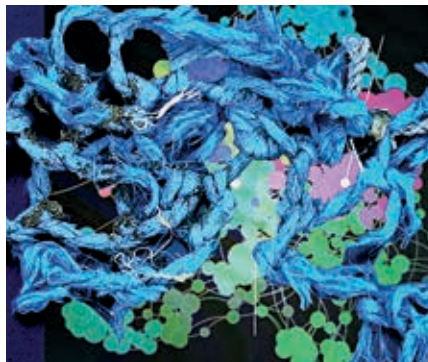
**12–13 MAR, THU, 1–5PM & FRI, 1–9PM**

**LAUNCH: FRI 13 MAR, 6PM**

*Microcultures and Microplastics* is a collection of collaborative projects from the RMIT Global Design Studio that engage with microplastics and plastic pollution in creative and resourceful ways.

**FREE**

**Venue** über art, 246A Sydney Rd, Brunswick



(top to bottom) © S Anirudh; Model by Mari Smith and Harrison Capper. Photo: Markus Jung; © Chris Henschke

**MONOLITH**

Presented by James Howe

**13–22 MAR, 10AM–5PM DAILY**

**OPENING: SAT 14 MAR, 4–6PM**

*Monolith* is a furniture exhibition that reflects on how mass production in city building shapes our lives.

**FREE**

**Venue** Modern Times, 311 Smith St, Fitzroy

**MYCODOME**

Presented by Mycelium Studios

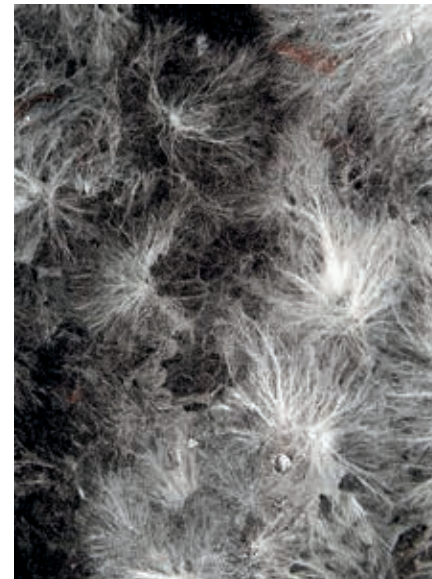
**12–21 MAR, 10AM–5PM DAILY**

**OPENING: FRI 13 MAR, 6–10PM**

*Mycodome* is an immersive experience in a temporary structure that explores ecology, society and culture through tracing and experimentation with the incredible and underrated material of fungi.

**FREE**

**Venue** Meat Market Stables, cnr Courtney and  
Wreckyn Sts, North Melbourne



(top to bottom) © James Howe; Image courtesy of Mycelium Studios

**NGV DESIGN STORE X CASSIE LEATHAM**

Presented by NGV

**12–22 MAR, 10AM–5PM DAILY**

Exclusive to the NGV design store, Taungurung/  
Wurundjeri artist, designer and weaver Cassie  
Leatham's new contemporary jewellery collection  
*Murrup Manggii (Spirit Within)* incorporates sterling  
silver with feathers, gumnuts, river reeds, flax and  
seeds collected from her home in Boisdale, Victoria  
as well as materials foraged from trips back to her  
own Country.

**FREE**

**Venue** NGV design store, Ground Level,  
NGV International, 180 St Kilda Rd, Melbourne

**NGV** DESIGN  
STORE



### OBJECTS OF LOVE

Presented by Craft

**12–22 MAR, MON–FRI, 11AM–6PM & SAT, 11AM–4PM**

*Objects of Love* presents objects and artworks that symbolise and reflect love of all kinds across cultures. Through exquisite objects and installations, the exhibition explores contemporary and traditional exchanges of love, connection to loved ones, and the strength and fragility of bonds of love.

**FREE**

**Venue** Craft Victoria, Watson Pl, Melbourne



### OBLIQUE CONTRIBUTIONS

Presented by Superscale

**14–21 MAR, 1–5PM DAILY**

*Oblique Contributions* considers how the confluence of the collective intelligence harnessed from university, community and industry can contribute obliquely to benefit our cities, culture and society.

**FREE**

**Venue** Docklands Cotton Mills, 40/91 Moreland St, Footscray



### OPEN HOUSE: 3RD TAMWORTH TEXTILE TRIENNIAL

Presented by Town Hall Gallery

**12–15 MAR, THU–FRI, 10AM–5PM, & SAT–SUN, 11AM–4PM**

**FLOOR TALK: SAT 14 MAR, 2–3PM**, bookings required

The 3rd Tamworth Textile Triennial celebrates the open-ended nature of contemporary textile practice from across Australia. On Saturday 14 March join Town Hall Gallery Curator and Tamworth Regional Gallery Director with invited exhibiting artists for a tour of the exhibition.

**FREE**

**Venue** Hawthorn Arts Centre, 360 Burwood Rd, Hawthorn



### OSMOSIS

Presented by Gallery Sally Dan-Cuthbert

**12–22 MAR, MON–FRI, 10AM–5PM**

**OPENING: SUN 15 MAR, 12–2PM**

Gallery Sally Dan-Cuthbert, Sydney in conjunction with LCI Melbourne present important emerging and established designers demonstrating cross-pollination of art and design.

**FREE**

**Venue** LCI Melbourne Gallery, 150 Oxford St, Collingwood

### PARALLEL VISIONS

Presented by Swinburne School of Design and CO.AS.IT.

**12–21 MAR, TUE–FRI, 10AM–5PM & SAT, 12.30–5PM**

**OPENING: THU 12 MAR, 6.30PM**, bookings required

**TALK: THU 19 MAR, 6.30–8PM**, bookings required

*Parallel Visions* is an exhibition of contemporary reinterpretations of Italian design through visual art, display systems and virtual reality.

**FREE**

**Venue** 189–199 Faraday St, Carlton

### PARTU (SKIN) BY JOHNNY NARGOODAH AND TRENT JANSEN

Presented by Gallery Sally Dan-Cuthbert and Arc One

**13–22 MAR, TUE–SAT, 11AM–5PM**

**OPENING: FRI 13 MAR 6–8PM**

**FLOOR TALK: SAT 14 MAR, 3.30–4.30PM**

*Partu (Skin)* is the latest collaboration between remote cattle-station saddler Johnny Nargoodah and conceptual object designer Trent Jansen: an experiment in avant-garde furniture design resulting from the coming together of their oddly mismatched sensibilities and skills in working with animal skins.

**FREE**

**Venue** Arc One, 45 Flinders Ln, Melbourne

(top to bottom) Vipoo Srivilasa, *Wedding Conch Shell* 2008. Photo: Andrew Barcham. Image courtesy of Scott Livesey Galleries, Melbourne; Image courtesy of Superscale; Ema Shin, detail from *Devoted Body* 2017, mixed media, 180 x 260 cm, image courtesy of Tamworth Regional Gallery. Photo: by Oleksandr Pogorilyi

(top to bottom) Michael Gittings, *Screen S02* 2019, courtesy of the artist and Gallery Sally Dan-Cuthbert; Image courtesy of Swinburne School of Design; Ngumu Jangka Warnti Chair. Photo: Abraham Markos

### PLEATED PARALLAX

Presented by Kate Geck

**12–19 MAR, 11AM–4PM DAILY**

*Pleated Parallax* intersects craft and technology in the design of contemplative surfaces.

**FREE**

**Venue** Library at Dock, 107 Victoria Harbour Prom, Melbourne



### PUMP UP THE VOLUME

Presented by Chamberlain Architects

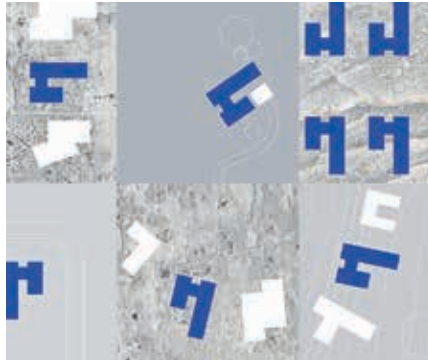
**SAT 21 MAR, 10AM–5PM**

**FLOOR TALK: SAT 21 MAR, 3–4PM**, bookings required

*Pump Up the Volume* asks: Can architects amplify their voice in single detached housing by exploring opportunities in volume housing?

**FREE**

**Venue** 73 Cromwell St, Collingwood



### RECONSTRAINED

Presented by RMIT School of Design

**12–13 MAR, THU, 1–5PM & FRI, 1–9PM**

**LAUNCH: FRI 13 MAR, 6PM**

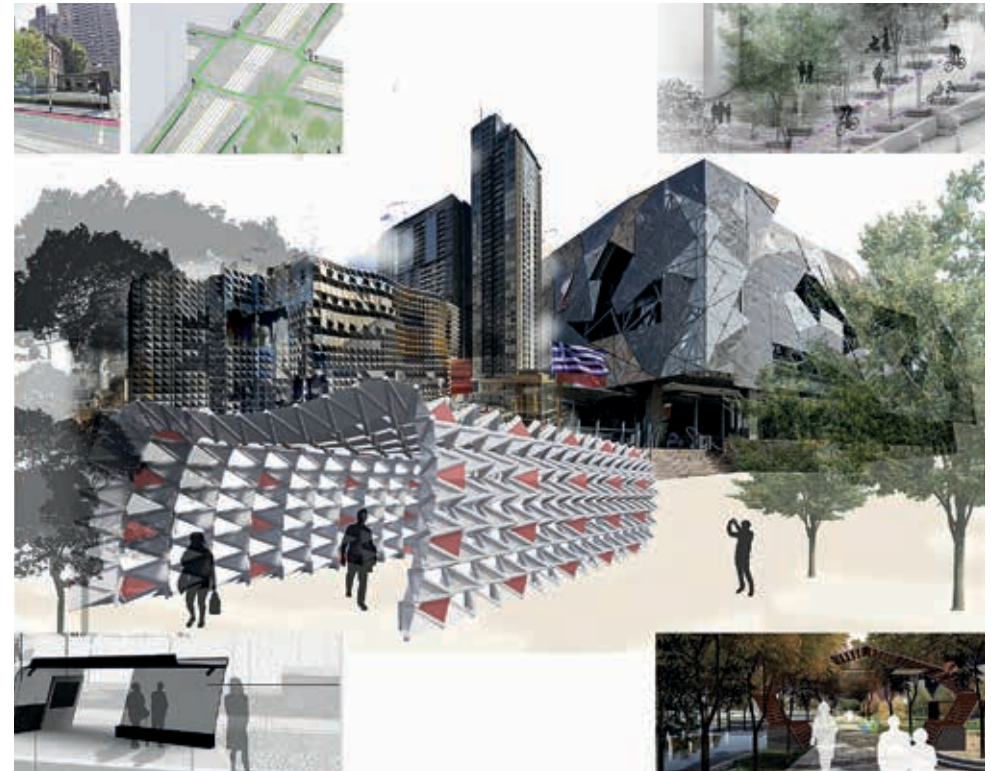
*Reconstrained* draws together speculative and critical design explorations to look at systemic impacts on our lives.

**FREE**

**Venue** über art, 246A Sydney Rd, Brunswick



(top to bottom) © Kate Geck; Image courtesy of Chamberlain Architects; © Cara Jordan-Miller, Kate Thaus, Joshua Wait, Phoebe Richardson



### RE-MAKING E-WASTE LAB

Presented by RMIT School of Design and Monash Design

**FRI 20 MAR, 4–7PM**

**OPENING: MON 16 MAR, 5PM**

**OPENING FORUM: MON 16 MAR, 5.30–7.30PM**

**WORKSHOPS: TUE 17, WED 18 & THU 19 MAR, 10AM–4PM**

*Re-Making E-Waste* is a 'speculative repair' lab that invites participants of the Melbourne Design Week to shape new lives for old e-things.

**FREE** bookings required for Forum and Workshops

**Venue** Building 45, RMIT University, 61/89 Lygon St, Carlton

(above) Image courtesy of Master of Design Innovation and Technology, RMIT University;

### SAFE CITY SMART CITY

Presented by RMIT School of Design

**16–20 MAR, 12–2PM DAILY**

**OPENING: TUE 17 MAR, 6–8PM**

*Safe City Smart City* exhibits strategies, infrastructures and design systems that ensure the creation of safe urban environments in the twenty-first century.

**FREE**

**Venue** RMIT Media Portal, 414–418 Swanston St, Melbourne

## SEA AND SEEING

Presented by SIX

**FRI 20 MAR, 12–5PM**

*Sea and Seeing* is an exhibition and discussion exploring methods of reusing discarded plastic to add value.

**FREE** bookings required

**Venue** The Hangar, Building 516, RMIT School of Fashion & Textiles, 25 Dawson St, Brunswick



## SECOND LIFE

Presented by Eugenie Kawabata

**12–21 MAR, MON, 8AM–3PM, TUE–SAT, 8AM–11PM & SUN, 9AM–4PM**

*Second Life* is an exhibition that encourages audiences to critically re-engage with defunct objects as they are reborn and reimagined with humour in a second life.

**FREE**

**Venue** St Heliers Gallery, 1 St Heliers St, Abbotsford Convent, Abbotsford



(top to bottom) Photo: Vince Caligiuri; Photo: Adrian Lander



## SHIFTING OCCUPANCY

Presented by One Two One Two

**12–22 MAR, 10AM–5PM DAILY**

**OPENING: SAT 14 MAR, 6PM**

One Two One Two, an annual exhibition platform established by Elliot Bastianon and Andrew Carvolth, presents *Shifting Occupancy*, which responds to the theme of the city.

**FREE**

**Venue** ICI House, 1 Nicholson St, East Melbourne



## STEM DESIGN

Presented by Geelong Tech School

**12–20 MAR, MON–FRI, 9AM–4PM**

An exhibition showcasing Geelong Secondary School Students STEM design products.

**FREE**

**Venue** Geelong Tech School, cnr Latrobe Tce and Little Malop St, Geelong



## SYNESTHESIA

Presented by Perfume Playground

**SAT 21 MAR, 10–11.30AM, 12–1.30PM, 3–4.30PM, 5–6.30PM & 7–8.30PM**  
**SUN 22 MAR, 10–11.30AM, 12–1.30PM, 3–4.30PM & 5–6.30PM**

**OPENING: FRI 20 MAR, 7–8.30PM**

Come and explore a mind-expanding tour of colour and scent with Perfume Playground.

**Cost** \$79, bookings required

**Venue** Norla Dome, Mission to Seafarers, 717 Flinders St, Docklands

(top to bottom) Image courtesy of One Two One Two; Image courtesy of Geelong Tech School; © Veronika Sola

EXHIBITIONS

TAKE THE CAKE

Presented by NGV, Queen Fine Foods and Melbourne Food & Wine Festival  
**18–22 MAR, 10AM–5PM DAILY**  
This exhibition developed by Melbourne Food & Wine Festival and the NGV showcases the iconic cake designs made famous by the *Australian Women's Weekly Children's Birthday Cake Book*.  
**FREE**  
**Venue** Ground Level Foyer, The Ian Potter Centre: NGV Australia, Federation Square, cnr Flinders St and Russell St, Melbourne



THE CITY SHAPED

Presented by Amy Evans, Eva Florindo and Conor Todd  
**20–22 MAR, 10AM–6PM DAILY**  
**OPENING: FRI 20 MAR, 6PM**  
*The City Shaped* explores the idea of the city as a machine for cultural production through a series of images and sculptural objects.  
**FREE**  
**Venue** Brunswick Street Gallery, Levels 1 and 2, 322 Brunswick St, Fitzroy



(top to bottom) Image courtesy of Melbourne Food and Wine Festival; © Amy Evans, Eva Florindo and Conor Todd (opposite) Image © Daniel Prohasky, Marcus Cher and Travis Gemmill

THE CONCRETE WASTE CHALLENGE

Presented by Curvecrete  
**12–22 MAR, 8AM–4PM DAILY**  
**OPENING: FRI 13 MAR, 6PM**, bookings required  
Second only to water, concrete is the most used substance on the planet: how will robotics and low-carbon technology shape our cities?  
**FREE**  
**Venue** Testing Grounds, 1 City Rd, Southbank



### THE GREY ZONE: COLLECTING AND COLLABORATION IN CONTEMPORARY ART AND DESIGN

Presented by Artbank

**12–22 MAR, MON–SAT, 9AM–5PM**

**OPENING: SAT 14 MAR, 12–3PM**, bookings required  
Artbank's exhibition invites practitioners to explore the nexus between art and design in context with Artbank's collection and space.

**FREE**

**Venue** Artbank Melbourne, 18–24 Down St, Collingwood



### THIS IS NOT A GRAPH

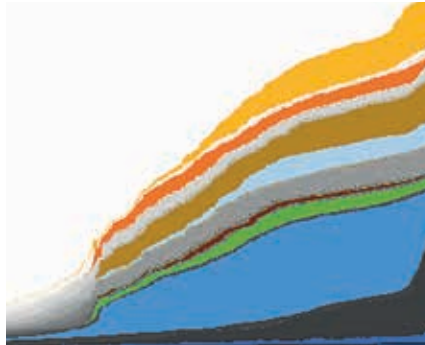
Presented by Caitlyn Parry and Natalie Miles

**13–14 MAR, 4–8PM**

*This is Not a Graph* is a digital projection informed by data relating to the hidden energy costs and waste from the design and construction industry.

**FREE**

**Venue** RMIT Design Hub, Building 100, Victoria St, Carlton



### TOAD BUSTING!

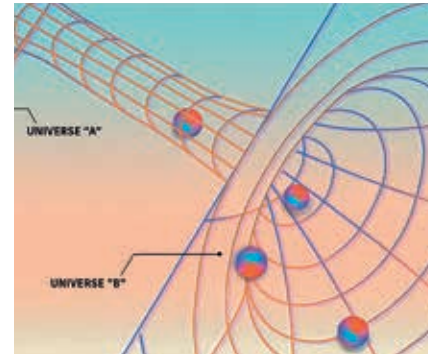
Presented by Vermin

**15–22 MAR, 12–6PM DAILY**

This exhibition fights the war on cane toads by transforming these toxic invaders of Top End Australia into bespoke designs.

**FREE**

**Venue** Bottom Art Space, rear 84 Smith St, Collingwood. Access via Little Oxford St, Collingwood



### TOP DESIGNS

Presented by Victorian Curriculum and Assessment Authority

**20–22 MAR, 10AM–5PM DAILY**

*Top Designs* showcases the outstanding creative talent of Victoria's emerging young designers.

**Cost** \$15 Adult / FREE Student

**Venue** Melbourne Museum, 11 Nicholson St, Carlton

### TRANSCENDENCE

Presented by Modern Times

**12–22 MAR, MON–FRI, 10AM–6PM, SAT, 10AM–5PM & SUN, 11AM–5PM**

**OPENING: SAT 14 MAR, 4–6PM**

This exhibition examines human experience through objects and their ability to activate a cultural representation, cultural practice or inspire a shift in thinking.

**FREE**

**Venue** Modern Times, 311 Smith St, Fitzroy

### UNIVERSE B

Presented by RMIT Industrial Design

**12–22 MAR, 11AM–6PM DAILY**

**OPENING: THU 12 MAR, 6PM**

The exhibition showcases fifteen unique concepts of contemporary industrial design.

**FREE**

**Venue** Maggie Wren's Art Space, 178 Johnston St, Collingwood

**VORES VÆVNINGER: OUR WEAVINGS**

Presented by Tove Papp Lindkvist in collaboration with the weavers from the Danish Institute for the Blind and Partially Sighted

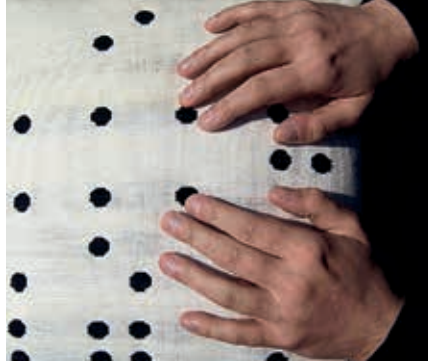
**12–21 MAR, TUE–FRI, 12–6PM & SAT 1–8PM**

**OPENING: WED 11 MAR, 6.30–8.30PM**

*Our Weavings* is a tactile textile exhibition showcasing the weaving of blind and visually impaired weavers of the Danish Institute for the Blind and Partially Sighted.

**FREE**

**Venue** Ladder Art Space, 81 Denmark St, Kew

**WATERLAND**

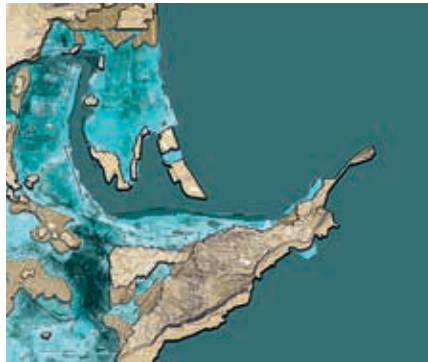
Presented by the School of Architecture and Built Environment at the University of Newcastle

**FRI 20 MAR, 5–9PM**

This exhibition re-imagines the threshold between land and water.

**FREE**

**Venue** Library at the Dock, 107 Victoria Harbour Prom, Docklands

**WHAT'S ON FLACK'S PLINTHS: IT'S TIME TO GET REAL!!**

Presented by Authentic Design Alliance and Flack Studio

**12–21 MAR, MON–FRI, 10AM–5PM**

**LAUNCH & PANEL DISCUSSION: THU 19 MAR,**

**6.30PM–8.30PM**, bookings required

An exhibition exploring the impact of design theft and the replica market, spotlighting how this endemic problem impacts the entire design economy.

**FREE**

**Venue** Flack Studios, 90 Moor St, Fitzroy

**WHICH MIRROR DO YOU WANT TO LICK?**

Presented by Åbåke, Sofie Dederen, Radim Peško and Brad Haylock

**18–22 MAR, 10AM–6PM DAILY**

**OPENING: TUE 17 MAR, 6–8PM**

Departing from the assumption that when something is printed it becomes more real, this exhibition of speculative and experimental graphic design explores the slippery line between reality and fiction.

**FREE**

**Venue** At the Above, Level 1, 198 Gertrude St, Fitzroy

**WORK SHOP 4**

Presented by Fiona Lynch

**12–20 MAR, 10AM–3PM**

*Work Shop 4* showcases bespoke designs by Fiona Lynch and curated works by up-and-coming designers and artists, reflecting the studio's affinity with nature and curiosity in the digital world.

**FREE**

**Venue** Fiona Lynch Interior Design, 7 Glasshouse Rd, Collingwood



# PROGRAM CALENDAR

How can design shape life? Explore the connection of design to the forces that mould the world through talks, walks, workshops and more.

See [designweek.melbourne](http://designweek.melbourne) for bookings.



### COMBATING BURNOUT IN THE DESIGN INDUSTRY

Presented by COMUNITI

**THU 12 MAR, 4–6PM**

This conversation focuses on combating burnout in the design industry: Are we practising what we preach?

**Cost** \$20 Adult, bookings required

**Venue** Stylecraft Melbourne, 145 Flinders Ln, Melbourne

### SYMPOSIUM: THE NEW NORMAL: THE CITY AS SYNTHETIC CINEMA

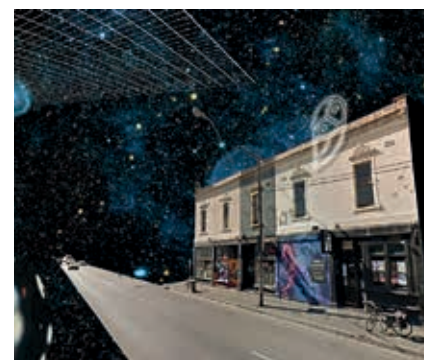
Presented by Melbourne Art Book Fair and Strelka Institute for Media, Architecture and Design, Moscow

**THU 12 MAR, 1–5PM**

With The New Normal Symposium, we invite a conversation around the City as Synthetic Cinema.

**Cost** \$45 NGV Member / \$55 Adult / \$50 Concession, bookings required

**Venue** Clemenger BBDO Auditorium, Ground Level, NGV International, 180 St Kilda Rd, Melbourne



### THE PUB OF THE FUTURE: WORKSHOP

Presented by Craig Walker: Design and Innovation

**THU 12 MAR, 5–8PM**

Join Craig Walker for a workshop to co-design the pub of the future.

**FREE** bookings required

**Venue** The Old Bar, 74–76 Johnston St, Fitzroy



### SEASONS IN BLAK BOX

Presented by Urban Theatre Projects and Royal Botanic Gardens Victoria

**THU 12 MAR–SUN 22 MAR**

**TUE–THU & SUN, 6–6.50PM, 7.15–8.05PM, FRI & SAT, 6–6.50PM, 7.15–8.05PM & 8.30–9.20PM**

Seasons is a multi-part sound work by Urban Theatre Projects presented in Blak Box, a surround-sound listening space for First Nations story, language and song.

**Cost** \$22 Adult / \$15 Concession, bookings required

**Venue** Observatory Lawn, Melbourne Gardens, Royal Botanic Gardens Victoria



### A ROYAL COMMISSION INTO THE STATE OF AUSTRALIAN CITIES

Presented by Oculus

**THU 12 MAR, 6–7.15PM**

Part theatre, part panel discussion, this hypothetical Royal Commission delves into the most pressing issues facing the planning of our cities.

**FREE** bookings required

**Venue** Clemenger BBDO Auditorium, Ground Level, NGV International, 180 St Kilda Rd, Melbourne



### MULTIPLICITY OF PLAY/CE

Presented by RMIT University

**THU 12 MAR, 6–8PM**

Multiplicity of Play/ce is an urban play conversation starting with First Peoples' connection to place.

**FREE** bookings required

**Venue** The Capitol, 113 Swanston St, Melbourne

### THE NEW GENERATION OF CREATIVE COLLABORATIONS

Presented by RUSSH, Communications Collective, Collectivity Talks and Virgin Australia Melbourne Fashion Festival

**THU 12 MAR, 6–9PM**

Bringing together creatives from fashion, design and art, this panel discussion explores how collaborations are driving change in sustainability and social justice. This event is presented as part of the Ideas Program at Virgin Australia Melbourne Fashion Festival 2020.

**Cost** \$45 Adult, bookings required

**Venue** NGV Members Lounge, NGV International, 180 St Kilda Rd, Melbourne



### WALKSCAPES: TREEGAZING, FITZROY GARDENS

Presented by Heather Hesterman and Amanda Hawkey

**FRI 13 MAR, 7.30–8.45AM &**

**SUN 22 MAR, 10.30–11.45AM**

A walking event to appreciate trees and landscape design of Fitzroy Gardens.

**FREE** bookings required

**Venue** Meet at the steps of Old Treasury Museum Building, 20 Spring St, Melbourne



### TOUR: THE LEARNING LAB

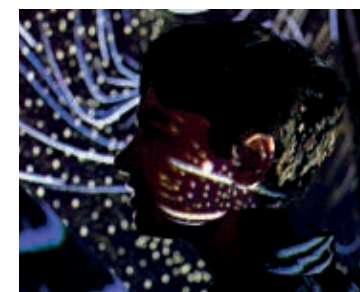
Presented by Melbourne Museum

**FRI 13 MAR, 5.30–6.30PM & 7–8PM**

Tour the newly opened Learning Lab, which empowers learners from Victoria to think differently and experience places and spaces and big ideas in a group environment.

**Cost** \$12 Adult / \$10 Concession / \$8 Museum Member / \$8 Child, bookings required

**Venue** Melbourne Museum, 11 Nicholson St, Carlton



### ACTIVATION: PIRATE RADIO

Presented by Liquid Architecture, De Player, Ben Landau, Field Theory and The Good Copy

**FRI 13 MAR, 6–10PM, SAT 14 & SUN 15 MAR, 9.30AM–5PM**

Turn on and tune in, Melbourne. NGV hosts Pirate Radio, a weekend broadcast from the Melbourne Art Book Fair with readings, reviews, music, a cavalcade of literati drop-ins, and banter with passing trade.

**FREE**

**Venue** Forecourt, NGV International, 180 St Kilda Rd, Melbourne



### ACTIVATION: KIDS' OWN ART BOOKS

Presented by Kids' Own Publishing

**FRI 13 – SUN 15 MAR, 10AM–5PM**

Kids' Own Publishing, along with guest artists, will host a space in which children and families can be immersed in the art of bookmaking, the craft of producing an art book and the democratic and performative act of publishing. Melbourne artist Michael Camilleri is in charge.

**Cost** FREE

**Venue** Great Hall, NGV International, 180 St Kilda Rd, Melbourne



## AUSTRALIA IN VENICE: 2020 ARCHITECTURE BIENNALE PREVIEW

Presented by Australian Institute of Architects

**FRI 13 MAR, 6–8PM**

The creative directors of the Australian Pavilion at the 2020 Venice Architecture Biennale, Tristan Wong and Jefa Greenaway, present an exclusive preview of the exhibition.

**FREE** bookings required

**Venue** NGV Australia Theatre, Ground Level, The Ian Potter Centre: NGV Australia, Federation Square, cnr Flinders St and and Russell St, Melbourne



## DESIGNING A LEGACY

Presented by Tim Ross

**FRI 13 MAR, 7–8.15PM**

Comedian and design nerd Tim Ross draws out the stories of Australian families whose lives have been shaped within the walls of modern masterpieces, and discovers how architecture and memories bind us to a place.

**Cost** \$35 NGV Member / \$45 Adult / \$39 Concession, bookings required

**Venue** Clemenger BBDO Auditorium, Ground Level, NGV International, 180 St Kilda Rd, Melbourne



## 100 JOBS OF THE FUTURE

Presented by Local Peoples, Matters Journal and Deakin University

**SAT 14 MAR, 11AM–4PM**

*100 Jobs of the Future* is an obstacle course, exhibition and party showcasing original research by Local Peoples and Deakin University and the new issue of *Matters Journal*.

**FREE** bookings required

**Venue** Abbotsford Convent, 1 St Heliers St, Abbotsford



## FORGOTTEN ECOLOGIES OF BIRRARUNG

Presented by Open House Melbourne and Melbourne Architours

**SAT 14 MAR, 10AM–1PM**

Explore the oft-forgotten ecologies of Birrarung (Yarra River), stopping along the way for conversations about the river's future.

**Cost** \$35, bookings required

**Venue** 154 Alexandra Ave, South Yarra



## OCEAN OSMOSIS: DESAL TOUR

Presented by Open House Melbourne and Watersure

**SAT 14 MAR, 10AM–12PM, 12–2PM & 2–4PM**

Visit the Victorian Desalination Project, home to the largest green roof in the southern hemisphere and capable of providing 150 billion litres of water to Melbourne a year.

**FREE** bookings required

**Venue** Victorian Desalination Plant, 400 Lower Powlett Rd, Wonthaggi

### DEBBIE MILLMAN: VISUAL STORYTELLING WORKSHOP

Presented by Creative Women's Circle

**SAT 14 MAR, 10AM–2PM**

Debbie Millman delivers this workshop that explores the art of telling a story through a unique combination of images and words. You will investigate how stories have to honor our collective human experiences.

**Cost** \$120 Adult / \$65 Student, bookings required

**Venue** Swinburne University of Technology Advanced Manufacturing and Design Centre (AMDC Building) Lv 5, Design Studios 505–506, 469–477 Burwood Rd, Hawthorn



### OPEN\_COLLAB: GLOBAL LOCAL

Presented by Wayne Smith, 313RGB and Okay Kiosk

**SAT 14 MAR, 10AM–4PM**

**OPENING: SAT 14 MAR, 5–7PM**

Open\_Collab is an international collaborative workshop that provokes unexpected juxtapositions and chance encounters through design.

**Cost** \$95 Adult / \$75 Concession + booking fee, bookings required

**Venue** 43 Derby St, Collingwood



### DEEP DIVE: SEA URCHIN SNORKEL TOUR

Presented by Open House Melbourne

**SAT 14 MAR, 10.30AM–12.30PM**

Deep Dive is a snorkel tour in Port Phillip Bay with Dr. Pirjo Haikola that reveals the exploding population of sea urchins living below the surface of the bay.

**FREE** bookings required

**Venue** Port Phillip Bay  
see [openhouselmelbourne.org](http://openhouselmelbourne.org) for details



### RIVER RIGHTS: YARRA BEND

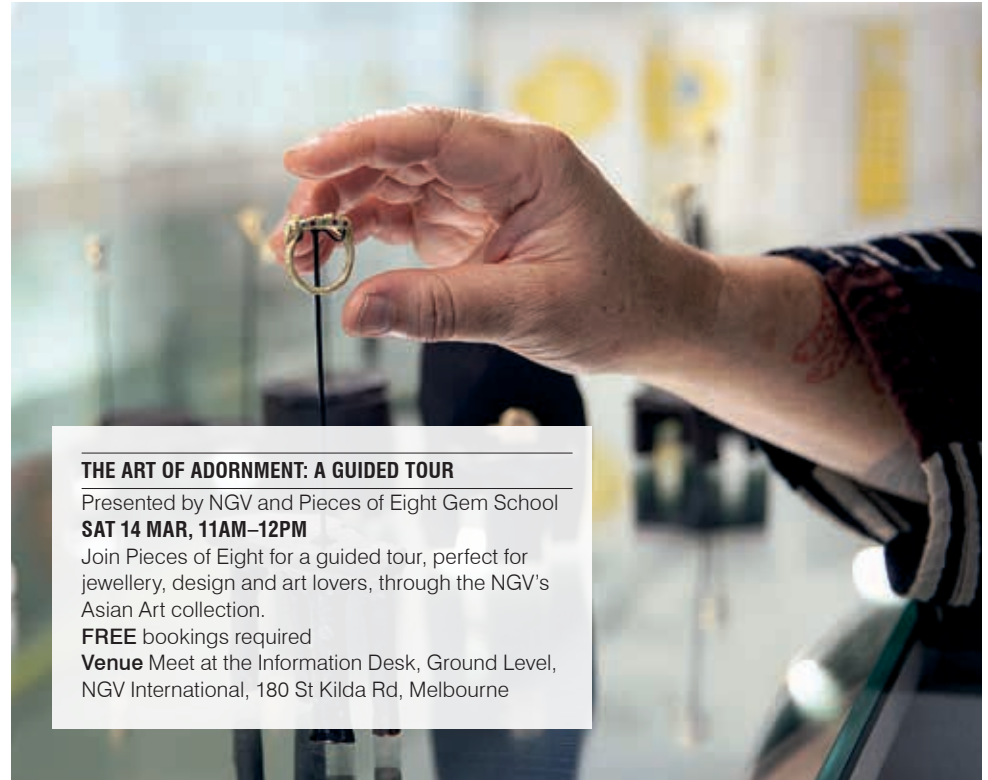
Presented by Open House Melbourne and the Yarra Riverkeeper Association

**SAT 14 MAR, 11AM–1PM**

A river ramble exploring waterfront access, development and the river as public space.

**FREE** bookings required

**Venue** Meeting at Dights Falls Reserve Car Park, off Trenerry Cr, Clifton Hill



### THE ART OF ADORNMENT: A GUIDED TOUR

Presented by NGV and Pieces of Eight Gem School

**SAT 14 MAR, 11AM–12PM**

Join Pieces of Eight for a guided tour, perfect for jewellery, design and art lovers, through the NGV's Asian Art collection.

**FREE** bookings required

**Venue** Meet at the Information Desk, Ground Level, NGV International, 180 St Kilda Rd, Melbourne

**PROOF**

Presented by Alterfact Studio

**SAT 14 MAR, 12–2PM, 1–3PM & 2–4PM**

Hand make an object to be scanned and printed in clay, then hand over its intellectual property.

**Cost** \$40 Adult, bookings required

**Venue** East Brunswick Village, 143 Nicholson St, Brunswick East



**BOOK LAUNCH: GEOMETRY, SIMPLICITY, PLAY:  
EXHIBITING VICO MAGISTRETTI**

Presented by Istituto Italiano di Cultura, RMIT School of Architecture and Urban Design and Vico Magistretti Foundation

**SAT 14 MAR, 1–2PM**

A book launch event for *Geometry, Simplicity, Play: The Approach of Vico Magistretti*.

**FREE** bookings required

**Venue** NGV Australia Theatre, Ground Level, The Ian Potter Centre: NGV Australia, Federation Square, cnr Flinders St and Russell St, Melbourne



(top to bottom) Image © Ben Landau; Image: Photo: Ben Hosking

**UPHAAR: OBJECTS OF LOVE SYMPOSIUM**

Presented by Garland magazine

**SAT 14 MAR, 2–5PM**

*Uphaar* is a symposium and exhibition launch about objects that bind us together, inspired by India.

**Cost** \$10, bookings required

**Venue** The Garden Room, Level 5, Building 10, RMIT University, Bowen St, Melbourne

**MTALKS: EXPERIMENTAL ARCHITECTURAL WRITING**

Presented by MPavilion

**SAT 14 MAR, 1–3PM**

This writing workshop, hosted by writer and cultural historian Anna Kate Blair, explores a range of creative techniques for engaging with structures, and considers the ways in which wordplay can expand our relationships with architecture.

**FREE**

**Venue** MPavilion, Queen Victoria Gardens, St Kilda Rd, Melbourne

(above) *Mata ne pachedi* 2016 (detail) patua scroll. © Rajesh Chaitya Vangad Maharashtra

**REGENERATIVE BIODESIGN: CO-EVOLVING  
SUSTAINABILITY**

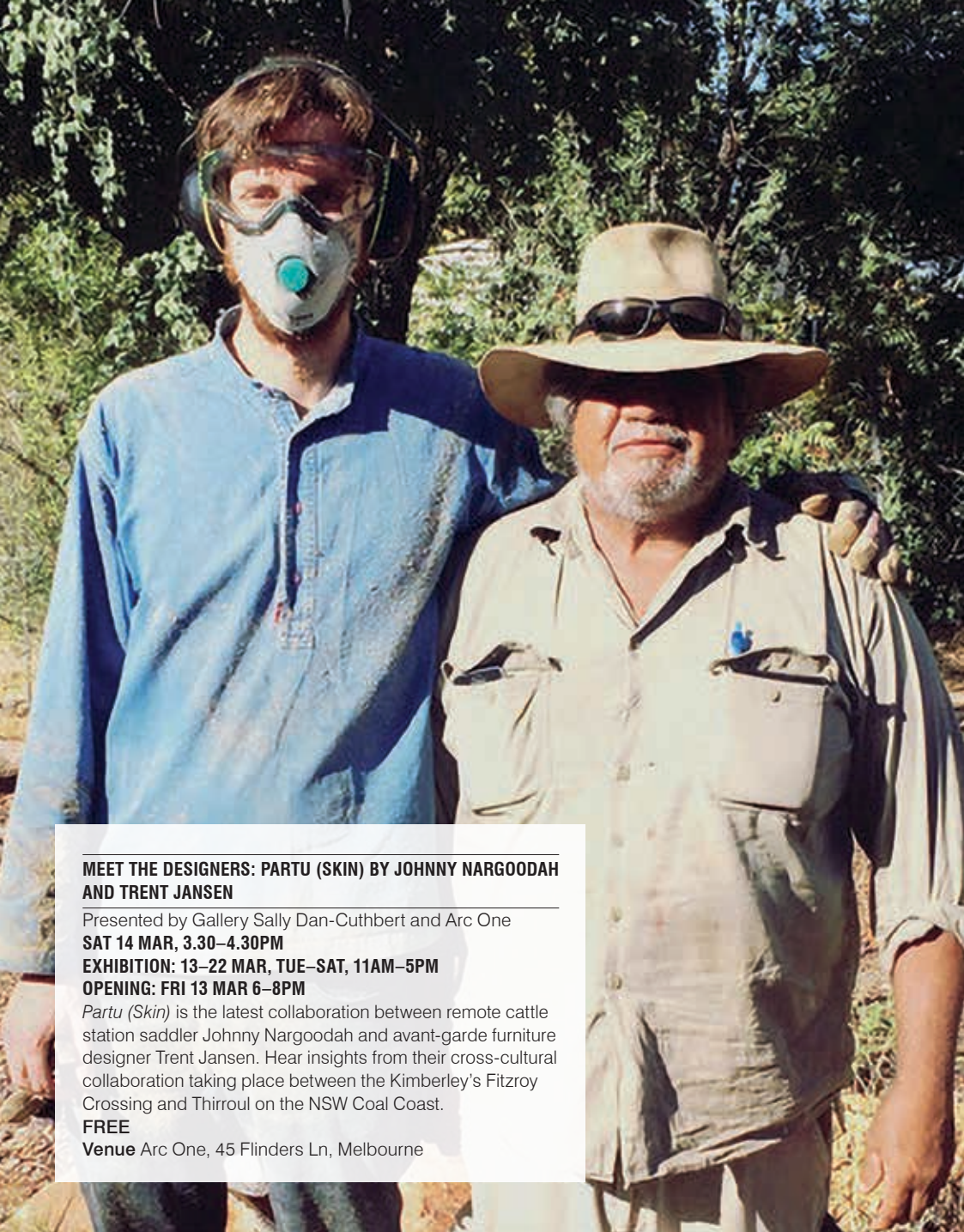
Presented by MPavilion

**SAT 14 MAR, 3.30–4.30PM**

This panel explores the transitions towards a circular economy through the lens of bio-design and regenerative architecture.

**FREE**

**Venue** MPavilion, Queen Victoria Gardens, St Kilda Rd, Melbourne



**MEET THE DESIGNERS: PARTU (SKIN) BY JOHNNY NARGOODAH AND TRENT JANSEN**

Presented by Gallery Sally Dan-Cuthbert and Arc One

**SAT 14 MAR, 3.30–4.30PM**

**EXHIBITION: 13–22 MAR, TUE–SAT, 11AM–5PM**

**OPENING: FRI 13 MAR 6–8PM**

*Partu (Skin)* is the latest collaboration between remote cattle station saddler Johnny Nargoodah and avant-garde furniture designer Trent Jansen. Hear insights from their cross-cultural collaboration taking place between the Kimberley's Fitzroy Crossing and Thirroul on the NSW Coal Coast.

**FREE**

**Venue** Arc One, 45 Flinders Ln, Melbourne

**DESIGNING A LEGACY**

Presented by Tim Ross

**SAT 14 MAR, 7–8.15PM**

Comedian and design nerd Tim Ross draws out the stories of Australian families whose lives have been shaped within the walls of modern masterpieces, and discovers how architecture and memories bind us to a place.

**Cost** \$35 NGV Member / \$45 Adult / \$39 Concession, bookings required

**Venue** Clemenger BBDO Auditorium, Ground Level, NGV International, 180 St Kilda Rd, Melbourne

**PROTECTING URBAN WATERWAYS**

Presented by Open House Melbourne and the Yarra Riverkeeper Association

**SUN 15 MAR, 10AM–12PM**

Hear a discussion about urban water advocacy onboard a boat.

**Cost** \$10, bookings required

**Venue** Meet at Federation Wharf, 15–19 Princes Walk, Melbourne

**WALKSCAPES: TREEGAZING, FLAGSTAFF GARDENS**

Presented by Heather Hesterman and Amanda Hawkey

**SUN 15 MAR, 10.30–11.45AM & 3.30–4.45PM**

A walking event to appreciate trees and landscape design of Flagstaff Gardens.

**FREE** bookings required

**Venue** Meet at the steps of State Library of Victoria, 328 Swanston St, Melbourne

**PROOF**

Presented by Alterfact Studio

**SUN 15 MAR, 12–2PM, 1–3PM & 2–4PM**

Hand make an object to be scanned and printed in clay, then hand over its intellectual property.

**Cost** \$40 Adult, bookings required

**Venue** East Brunswick Village, 143 Nicholson St, Brunswick East

## HEIDE X MELBOURNE DESIGN WEEK

### ARVO TEA: AT THE TABLE

Presented by Heide Museum of Modern Art

**SUN 15 MAR, 3–4.30PM**

**EXHIBITION INTERVENTION: 12–22 MAR,  
TUE–SAT, 10AM–5PM**

Enjoy afternoon tea and a conversation with designer Daniel Barbera in the historic dining room of the Heide Cottage as he gives insights into his design practice, materials and processes.

**Cost** ARVO TEA: \$35 Adult / \$30 Concession / \$25 Heide Member, bookings required

**EXHIBITION INTERVENTION:** \$20 Adult /

\$15 Concession / FREE Heide Member

**Venue** Heide Cottage, Heide Museum of Modern Art, 7 Templestowe Rd, Bulleen



(above) *Breakfast in Heide*, c. 1945, photographer unknown © John and Sunday Reed

## DEBBIE MILLMAN: COURAGE VS CONFIDENCE

Presented by Creative Women's Circle

**SUN 15 MAR, 5–7.30PM**

Debbie Millman, design expert and host of the podcast *Design Matters*, speaks about how she has intentionally shaped her life to fit her personal definition of success. Debbie Millman will be signing copies of her books after the presentation.

**Cost** \$40 Adult + booking fee, bookings required

**Venue** Clemenger BBDO Auditorium, Ground Level, NGV International, 180 St Kilda Rd, Melbourne

## REFRAME: THE EVOLVING PRACTICE OF DESIGN

Presented by Monash Design

**16–20 MAR**

**WORKSHOPS: MON–FRI, 12–2PM**

**PANEL DISCUSSIONS: MON–FRI, 6–7PM**

This program of discussions and workshops interrogates the potential of design research through the frame of social impact and explores design's transformative potential to imagine anew the places where we live, work, heal, learn and play.

**FREE** bookings required

**Venue** No Vacancy Gallery, 34–40 Jane Bell Ln, Melbourne

## MTALKS: DENSITY, PUBLIC SPACE AND HAPPINESS

Presented by MPavilion

**MON 16 MAR, 12.30–1.30PM**

This panel hosted by Melbourne-based design studio NH Architecture explores the role and future of public facilities in urban developments.

**FREE**

**Venue** MPavilion, Queen Victoria Gardens, St Kilda Rd, Melbourne

## RE-MAKING E-WASTE LAB

Presented by RMIT School of Design and Monash Design

**MON 16 MAR, 5.30–7.30PM**

*Re-Making E-Waste* is a 'speculative repair' lab that invites participants of Melbourne Design Week to shape new lives for old e-things.

**FREE** bookings required

**Venue** Building 45, RMIT University, 61/89 Lygon St, Carlton



### INTERCULTURAL CRAFT EXCHANGE: CONVERSATIONS WITH KOREA

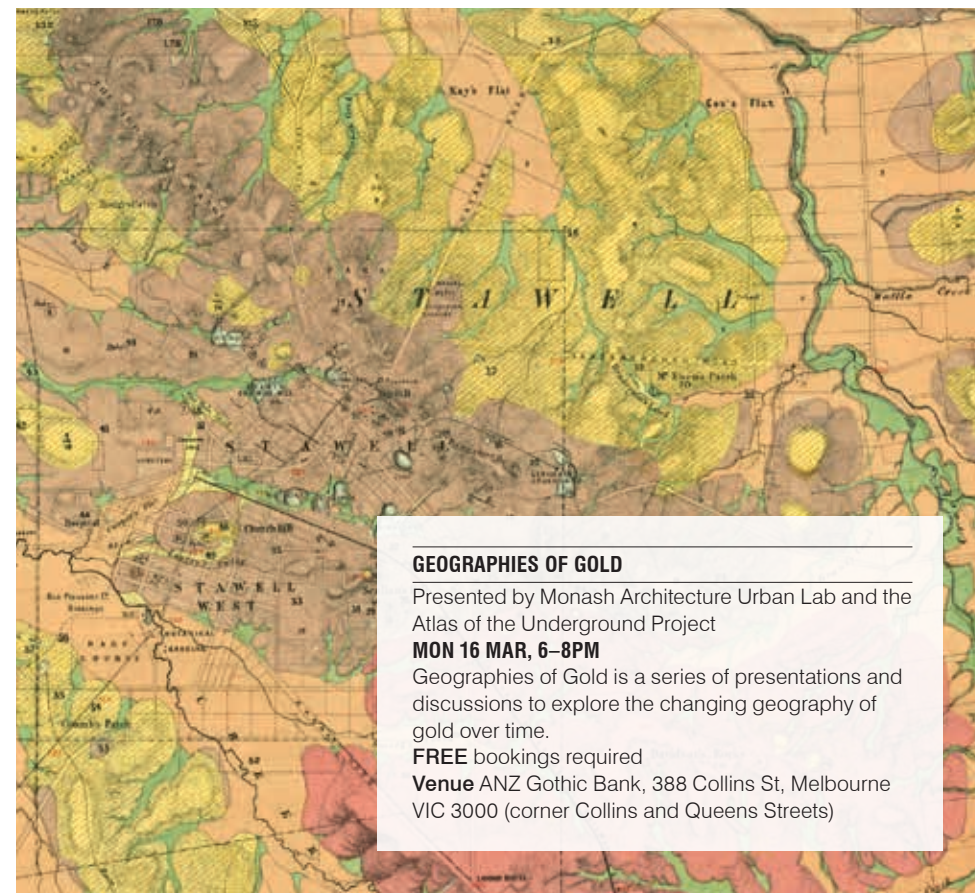
Presented by Asialink Arts with LCI Melbourne  
**MON 16 MAR, 6–7.30PM**

A panel discussion on the Cheongju Craft Biennale in Korea and opportunities for intercultural exchange.

**FREE** bookings required

**Venue** LCI Melbourne, 150 Oxford St, Collingwood

(above) Image courtesy of AsiaLink Arts



### GEOGRAPHIES OF GOLD

Presented by Monash Architecture Urban Lab and the Atlas of the Underground Project

**MON 16 MAR, 6–8PM**

Geographies of Gold is a series of presentations and discussions to explore the changing geography of gold over time.

**FREE** bookings required

**Venue** ANZ Gothic Bank, 388 Collins St, Melbourne VIC 3000 (corner Collins and Queens Streets)

### NEW MOBILITY

#### MELBOURNE DESIGN WEEK AT MERCEDES ME

Presented by Mercedes me Melbourne and NGV  
**MON 16 MAR, 6.30–8PM**

Join Mercedes-Benz experts for a thought-provoking conversation examining the constantly evolving and ground-breaking world of automotive design.

**Cost** \$10 NGV Member / \$12 Adult, price includes a welcome drink and grazing table on arrival

**Venue** Mercedes me, 525 Collins St, Melbourne

(above) Victorian goldfields geological maps, 1:31 680, Mines Dept, 1875–1895. Image courtesy of Monash Architecture



### COUNTERING THE CREATIVE EMERGENCY: LIVED EXPERIENCE, APPROACHES AND TOOLKITS

Presented by Leanne Hodyl and Michelle Tabet

**MON 16 MAR, 6–8PM**

Space for creative practice is disappearing in our cities. This event looks at the reasons why and how we can think differently about making space for creativity.

**FREE** bookings required

**Venue** Schoolhouse Studios, 81 Rupert St, Collingwood



### THE BUSINESS OF SUSTAINABLE DESIGN

Presented by Sussex Taps

**MON 16 MAR, 6–8PM**

A panel talk with four voices of Australian design and manufacturing on the lessons learned in shaping, and adapting to, a new sustainable design paradigm.

**FREE** bookings required

**Venue** 5 Union St, South Melbourne



### DESIGN PRACTICES FOR MORE THAN HUMAN COMMONS

Presented by The University of Newcastle and RMIT University

**MON 16 MAR, 6–8PM**

This forum explores multiple design approaches that exercise care beyond human benefit, enabling non-human agency to enter and inform design processes.

**Cost** \$15 or more donated to the The Firesticks Alliance, bookings required

**Venue** Clemenger BBDO Auditorium, Ground Level, NGV International, 180 St Kilda Rd, Melbourne



### FUTURE WELLNESS: FUTURE DESIGN

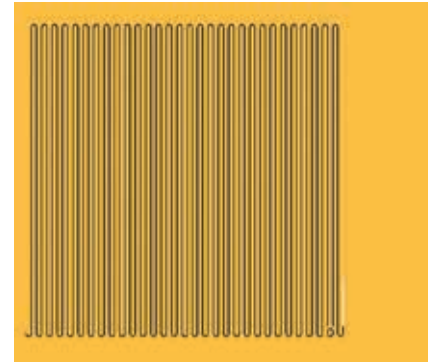
Presented by the Design Institute of Australia

**MON 16 MAR, 6–8PM**

In the second Future Design series, the Design Institute of Australia with guest speakers explore the ideas of digitised isolation, built environments and their combined impact on our mental health and wellness.

**Cost** \$20 Adult / \$10 DIA Member, bookings required

**Venue** NGV Australia Theatre, Ground Level, The Ian Potter Centre: NGV Australia, Federation Square, cnr Flinders St and Russell St, Melbourne



### MTALKS: BLAKITECTURE: OUTWARDS OR INWARDS

Presented by MPavilion

**MON 16 MAR, 6.15–7.15PM**

BLAKitecture brings together Indigenous built-environment practitioners on the Yaluk-ut Weelam land of the Boon Wurrung people to centralise Indigenous voices in conversations about architecture, the representation of histories, the present state and the future of our built environments.

**FREE**

**Venue** MPavilion, Queen Victoria Gardens, St Kilda Rd, Melbourne

### PHILIPPE BLOCK: THE FUTURE MASTER BUILDER

Presented by Melbourne School of Design

**MON 16 MAR, 7–8PM**

As construction methods are increasingly understood to be one of the key drivers of climate change, Philippe Block and his team at ETH Zurich are experimenting with new materials, geometry, and digital design and fabrication to shape the future. In this lecture, Block talks about the role of the future master builder in this complex world.

**FREE** bookings required

**Venue** B117 Theatre, Melbourne School of Design, University of Melbourne, Masson Road, Parkville

### DESIGN STRATEGY FORUM

Presented by Creative Victoria

**TUE 17 MAR, 8–10AM**

From branding and identity to product, architecture and experience, design offers many unique commercial and cultural advantages to businesses with a creative mindset. A panel of Victorian business leaders discuss how meaningful integration of design practice shapes core business strategy and drives competitive advantage. What makes a business leader embrace design?

**Cost** \$10 NGV Member / \$15 Adult / \$12 Concession, bookings required

**Venue** Garden Restaurant, Ground Level, NGV International, 180 St Kilda Rd, Melbourne



**A WASTE SYMPOSIUM**

Presented by Arup  
**TUE 17 MAR, 10AM–12PM**

The waste crisis is a moment of change both globally and for Australia: this symposium supports a positive rethink to lift us beyond a business-as-usual approach.

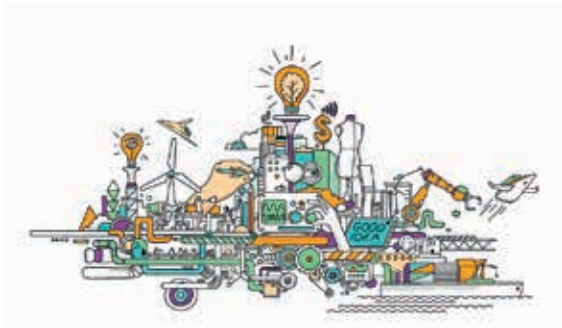
**FREE** bookings required  
**Venue** Arup, Sky Park, One Melbourne Quarter, 699 Collins St, Docklands

**RE-MAKING E-WASTE WORKSHOP**

Presented by RMIT School of Design and Monash Design  
**TUE 17 MAR, 10AM–4PM**, bookings required  
*Re-Making E-Waste* is a 'speculative repair' lab that invites participants of Melbourne Design Week to shape new lives for old e-things.  
**FREE**  
**Venue** Building 45, RMIT University, 61/89 Lygon St, Carlton

**FROM POOP TO PARK**

Presented by Open House Melbourne and Melbourne Water  
**TUE 17 MAR, 10AM–12PM**  
This one-hour tour will explore how transforming a decommissioned sewer may enhance community wellbeing.  
**FREE** bookings required  
**Venue** Meet at cnr Lukis Ave and McLachlan Dr, Williams Landing



**VISUALISING AUSTRALIA'S DESIGN ECONOMY**

Presented by IP Australia  
**TUE 17 MAR, 12–2PM**  
IP Australia shares key findings from the Australian Government's review of the Australian design economy, and asks the public to share their thoughts and ideas for future reform.  
**FREE** bookings required  
**Venue** Alto Event Space, Top Floor, Melbourne GPO Building, cnr Elizabeth St and Little Bourke St, Melbourne

**WATER REGIMES OF BOLIN BOLIN: PAST, PRESENT AND FUTURE**

Presented by Open House Melbourne and Melbourne Water  
**TUE 17 MAR, 10AM–12PM**  
Hear how the Bolin Bolin Billabong is being rehabilitated for future generations on a tour of the ancient site along Birrarung (Yarra River).  
**FREE** bookings required  
**Venue** 191 Bulleen Rd, Bulleen



**DESIGNING MOBILITY IN THE FUTURE CITY**

Presented by Monash Design  
**TUE 17 MAR, 12–2PM**  
Led by Associate Professor Selby Coxon and Dr Robbie Napper, this workshop explores how to design the transition to sustainable urban mobility with the Mobility Design Lab's toolkit.  
**FREE** bookings required  
**Venue** No Vacancy Gallery, 34–40 Jane Bell Ln, Melbourne

**MTALKS: ARCHITECTURE OF THE PRESENT: JOHN WARDLE AND MATTHEW BIRD IN CONVERSATION**

Presented by MPavilion  
**TUE 17 MAR, 12.30–1.30PM**  
Architecture of the Present is a conversation between architects John Wardle and Matthew Bird that takes the concept of architecture as a choreographer of experience as its starting point.  
**FREE**  
**Venue** MPavilion, Queen Victoria Gardens, St Kilda Rd, Melbourne



### WEAVING BUSH SCULPTURES WORKSHOP WITH AUNTY BRONWYN RAZEM

Presented by NGV

**TUE 17 MAR, 12.30–3PM**

Contemporary artist Aunty Bronwyn Razem shares her knowledge of traditional and contemporary weaving practices in a hands-on workshop weaving bush sculptures.

**Cost** \$16 NGV Member / \$20 Adult / \$18 Concession, bookings required

**Venue** Meet at Information Desk, NGV International, 180 St Kilda Rd, Melbourne



### CYBERNETIC DESIGN LAB: DISRUPTIVE DESIGN FOR HEALTH

Presented by Health Transformation Lab

**TUE 17 MAR, 2–5PM**

During this open lab, hear an interactive panel discuss cybernetics and salutogenic design.

**FREE** bookings required

**Venue** Level 2, 155 Pelham St, Carlton



### KEYNOTE LECTURE FRANCIS KÉRÉ: ARCHITECTURE SHAPES LIFE

Presented by NGV with Architecture Foundation Australia and the Futuna Lecture Series

**TUE 17 MAR, 6.30–7.30PM**

Internationally acclaimed architect Francis Kéré delves into his own journey – revealing how architecture has shaped his life and sharing his vision for how architecture that is collaboratively realised, rooted in traditional knowledge and specific to its context will contribute to a positive and dynamic future for Africa.

**Cost** \$28 NGV Member / \$35 Adult / \$32 Concession, bookings required

**Venue** Great Hall, Ground Level, NGV International, 180 St Kilda Rd, Melbourne

This is an Auslan interpreted program

(top to bottom) Aunty Bronwyn Razem. Image courtesy of Jerry Galea Photography; Image courtesy of Health Transformation Lab; Francis Kéré. Image courtesy of Kéré Architecture



### KEYNOTE LECTURE: FRANCESCO CARERI

Presented by Molonglo

**TUE 17 MAR, 6–7PM**

Italian author and architecture academic Francesco Careri talks about his practice of collective walking, and its capacity to generate architecture and landscape, and shape the meaning of spaces.

**Cost** \$12, bookings required

**Venue** Clemenger BBDO Auditorium, Ground Level, NGV International, 180 St Kilda Rd, Melbourne



### EXTRACTION

Presented by Prototypes and Popcorn

**TUE 17 MAR, 6–8PM**

This event explores how design interacts with, and relies on, different systems of extraction.

**FREE** bookings required

**Venue** Loop, 23 Meyers Pl, Melbourne



### DESIGN SHIFT

Presented by Australian Graphic Design Association

**TUE 17 MAR, 6.30–8.30PM**

Humans are becoming co-dependant on technology, evidenced by the rise of data science, digital platforms, automation, artificial intelligence, cyborgs and smart technology. But are we losing touch with what it means to be human?

**Cost** \$35 Adult / \$25 Concession / \$20 AGDA Member, bookings required

**Venue** NGV Australia Theatrette, Ground Level, The Ian Potter Centre: NGV Australia, Federation Square, cnr Flinders St and Russell St, Melbourne

(top to bottom) Ararat Centre of Art and Kurdish Culture, initiated by Stalker in cooperation with the Kurdish community of Campo Boario, Rome, Italy 1999. Image courtesy Francesco Careri; Image © Daniel Neville; Design Shift - Tech vs Humans: staying human in the face of tech. © San San Truong



### SYMPOSIUM: DESIGN CITY | BUILDING AN INNOVATION ECOSYSTEM

Presented by Deakin University and The City of Greater Geelong

**WED 18 MAR & THU 19 MAR, 9.30AM–4PM**

Design City is a two-day symposium that investigates how design can be used to transform cities into innovation ecosystems.

**Cost** \$350 one-day ticket / \$550 two-day ticket, bookings required

**Venue** The Pier Geelong, Cunningham Pier, 10 Western Beach Foreshore Rd, Geelong

### E-WASTE CHALLENGE LIVE PITCH FINAL VICTORIAN DESIGN CHALLENGE 2020

Presented by NGV

**WED 18 MAR, 10AM–3.30PM**

Creative Victoria and NGV are offering a \$20,000 major prize for the best design idea in the Professional category and \$5000 in the Tertiary category in a challenge addressing one of the world's fastest growing waste problems – e-waste. Teams in each category will have to convince the Challenge jury, chaired by Craig Reucassel from the ABC's *War on Waste*, that their idea is the best solution to tackle the 40 million tons of e-waste produced globally every year.

**FREE**

**Venue** Great Hall, Ground Level, NGV International, 180 St Kilda Rd, Melbourne

### RE-MAKING E-WASTE WORKSHOP

Presented by RMIT School of Design and Monash Design

**WED 18 MAR, 10AM–4PM**, bookings required

*Re-Making E-Waste* is a 'speculative repair' lab that invites participants of the Melbourne Design Week to shape new lives for old e-things.

**FREE**

**Venue** Building 45, RMIT University, 61/89 Lygon St, Carlton

### INDUSTRIAL DESIGN: DESIGN EVOLUTION IN THE ARCHIVES

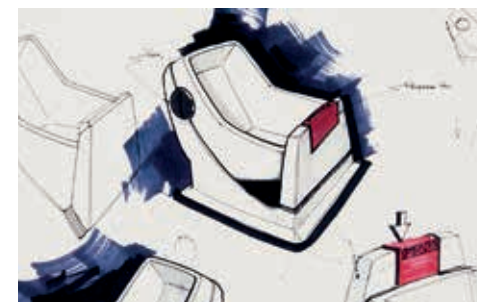
Presented by RMIT Design Archives

**WED 18 MAR, 11AM–12PM**

Industrial designers Simon Lockrey, Liam Fennessy, and Leah Heiss discuss the evolution of Melbourne industrial design, from product development to services and systems thinking.

**FREE** bookings required

**Venue** RMIT Design Archives, Building 100, RMIT University, 154 Victoria St, Carlton



### THE WESTERN TREATMENT PLANT

Presented by Open House Melbourne and Melbourne Water

**WED 18 MAR, 10AM–12PM & 1–3PM**

Much more than a 'poo farm', the Western Treatment plant is a place of historic, environmental and cultural significance. Join Open House Melbourne and Melbourne Water for a two-hour bus tour to the plant.

**FREE** bookings required

**Venue** Melbourne Water Discovery Centre, Lot 1, New Farm Rd, Werribee

### THE LEARNING CITY

Presented by Grimshaw

**WED 18 MAR, 12–1PM**

The Learning City is an in-depth examination of design that addresses the need for critical infrastructure, smart learning environments and immersive, blended working and learning space in growing cities.

**FREE** bookings required

**Venue** Clemenger BBDO Auditorium, Ground Level, NGV International, 180 St Kilda Rd, Melbourne



(above) Photo: Emma Cross Photographer

(opposite: top to bottom) Robert Pataki and Philip Slattery, Page featuring photographs of 'Safe n' Sound' baby capsule prototype and concept sketches, c. 1984, Gift of Robert Pataki, 2012; Image: © Grimshaw

**MERVE BEDIR: CASINO ARCHITECTURE**

Presented by Monash Architecture

**WED 18 MAR, 1–2PM**

Merve Bedir presents her research on casino architecture, a typology which stimulates the imagination, and wallets, of its inhabitants.

**FREE**

**Venue** G104, Building G, Monash University, Caulfield Campus, 900 Dandenong Rd, Caulfield East

**DESIGNING IN AND AROUND CULTURES INTERNATIONALLY**

Presented by Design Institute of Australia

**WED 18 MAR, 5–6PM**

Join Renée Ballard, Dan Neville and Katherine Kemp as they share their experiences working on international retail, hospitality and commercial interior design projects throughout Hong Kong, China and greater Asia.

**FREE**

**Venue** MPavilion, Queen Victoria Gardens, St Kilda Rd, Melbourne

**DESIGNING FOR HEALTH AND COMFORT IN YOUR HOME**

Presented by Inhabit

**WED 18 MAR, 5.45–8PM**

Inhabit unravels the reasons to feel comfortable and healthy in the home, the possible causes of discomfort and poor health, and how to empower people to make changes for the better.

**FREE** bookings required

**Venue** Inhabit Office, Level 6, 99 King St, Melbourne

**KEYNOTE LECTURE: BAS VAN ABEL: DARK MATTER**

Presented by NGV, E-Waste Watch Institute and Design Institute of Australia

**WED 18 MAR, 6.30–7.30PM**

Every pixel you see and every byte you send has a whole world of minerals, factories, recycling and distribution behind it. Fairphone aims to surface the dark matter of our production systems and make it human again. This keynote lecture by Fairphone founder Bas van Abel is a unique chance to think about the ways that design-led business can transform the environment and economy.

**Cost** \$28 NGV Member / \$35 Adult / \$32 Concession, bookings required

**Venue** Great Hall, Ground Level, NGV International, 180 St Kilda Rd, Melbourne  
This is an Auslan interpreted program

**ROBIN BOYD ANNUAL KEYNOTE LECTURE NMBW: OBSERVATION MATTERS**

Presented by NGV and the Robin Boyd Foundation

**WED 18 MAR, 6.30–7.30PM**

In an era of global sameness, can architectural processes create the time and space to engage meaningfully with local traditions and enrich the culture of the everyday? This lecture breaks down NMBW's projects into a series of tangible pieces that articulate how decisions have been made and values embedded.

**Cost** \$10 NGV Member & RBF Friend Member / \$15 Adult / \$8 Concession, bookings required

**Venue** Clemenger BBDO Auditorium, Ground Level, NGV International, 180 St Kilda Rd, Melbourne

(opposite) Image: Photo: Merve Bedir. (top to bottom) Image: Tokyo. Photo: Sean Pavone; Image courtesy of Inhabit



---

**THINK TANK: WELCOME TO PUBLIC SPACE**

---

Presented by Australian Centre for  
Contemporary Art

**WED 18 MAR, 6-8PM**

Key thinkers in the fields of public art and  
culture discuss the role fear plays in changing  
conceptions of what public space is, how it is  
designed, and who it is for.

**FREE** bookings required

**Venue** ACCA, 111 Sturt St, Southbank

## OCEANIC SPACE AND PACIFIC FUTURES

Presented by Parlour

**WED 18 MAR, 6PM–8PM**, bookings required  
Oceanic Space and Pacific Futures is a lively discussion of Pacific architecture, urbanism and Oceanic spatial concepts with Karamia Müller and Charmaine 'Ilaiū Talei.

**Cost** \$10 Adult / \$5 Concession, bookings required

**Venue** Melbourne City Bowls Club, Flagstaff Gardens, 309–311 William St, West Melbourne



## TRANSFORMATIVE LANDSCAPES: RESHAPING THE CITY THAT SHAPES US

Presented by Foreground, Vic Health and NGV

**THU 19 MAR, 8.30AM–1PM**

The way we design and plan our cities, parks and places has profound effects on our health and wellbeing. In this symposium, design and health experts explore the role of landscape architecture, urban design and planning in making healthful urban environments.

**Cost** \$40 Adult / \$25 Student, bookings required

**Venue** Clemenger BBDO Auditorium, Ground Level, NGV International, 180 St Kilda Rd, Melbourne

## GOOD DESIGN AND HERITAGE: WHEN NEW MEETS OLD

Presented by Heritage Council of Victoria and Office of the Victorian Government Architect  
**WED 18 MAR, 6.15–7.15PM**

This panel of experienced practitioners, including members of the Heritage Council of Victoria and OVGA architects, discuss the heritage buildings and places that are loved by the general public, and as the world and our lives change, their potential need to be re-imagined.

**FREE**

**Venue** MPavilion, Queen Victoria Gardens, St Kilda Rd, Melbourne

## INCLUSIVE DESIGN AND WELLBEING

Presented by Sonya Veronica Iskandar

**WED 18 MAR, 6.30–8PM**

This discussion delves into inclusive design and how it relates to wellbeing.

**FREE** bookings required

**Venue** Meat Market, Meeting Room, 5 Blackwood St, North Melbourne

## IN CONVERSATION: DR VICKI COUZENS WITH MYLES RUSSELL-COOK

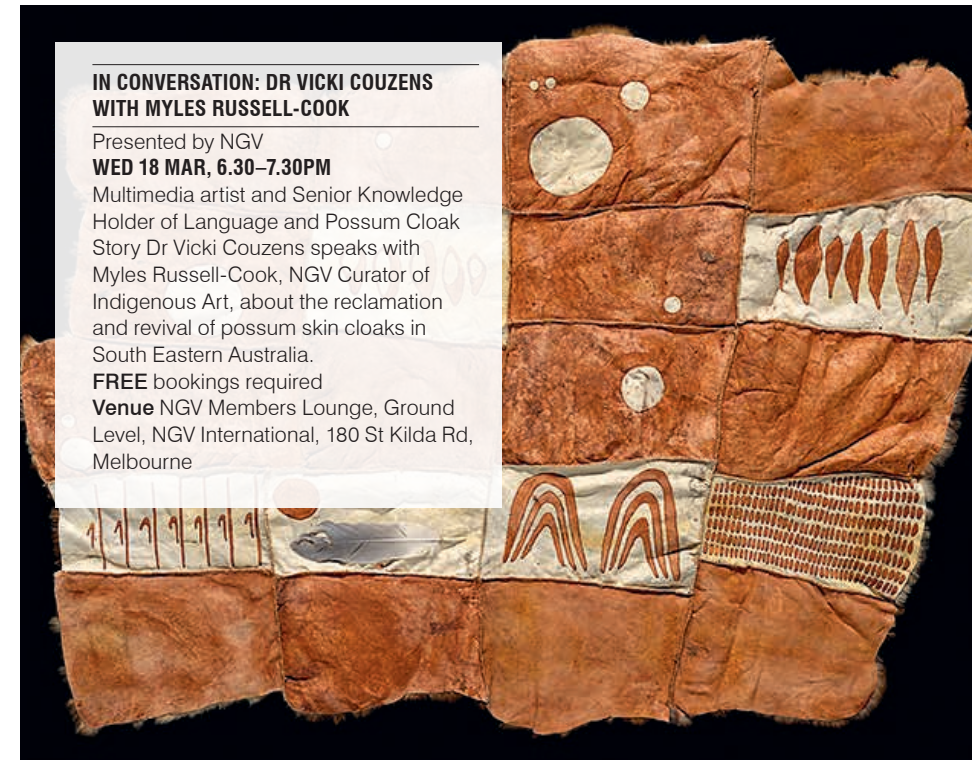
Presented by NGV

**WED 18 MAR, 6.30–7.30PM**

Multimedia artist and Senior Knowledge Holder of Language and Possum Cloak Story Dr Vicki Couzens speaks with Myles Russell-Cook, NGV Curator of Indigenous Art, about the reclamation and revival of possum skin cloaks in South Eastern Australia.

**FREE** bookings required

**Venue** NGV Members Lounge, Ground Level, NGV International, 180 St Kilda Rd, Melbourne



**RE-MAKING E-WASTE WORKSHOP**

Presented by RMIT School of Design and Monash Design

**THU 19 MAR, 10AM–4PM**

*Re-Making E-Waste* is a 'speculative repair' lab that invites participants of Melbourne Design Week to shape new lives for old e-things.

**FREE** bookings required

**Venue** Building 45, RMIT University, 61/89 Lygon St, Carlton

**ALEX STITT AND EXERCISEMENTS: COMMUNICATION DESIGN AND HEALTH PROMOTION**

Presented by RMIT Design Archives

**THU 19 MAR, 11AM–12PM**

Noel Waite and Marius Foley discuss the legacy and archives of Alexander Stitt, well known for his work on the 'Life. Be in it.' and 'Slip! Slop! Slap!' campaigns.

**FREE** bookings required

**Venue** RMIT Design Archives, Building 100, RMIT University, 154 Victoria St, Carlton



(above) Alex Stitt, *I've decided to quit smoking what do I do now: Life. Be in it:* RMIT Design Archives, Gift of Alex and Paddy Stitt, 2010, © 2019 Paddy Stitt

**CREATING LOVEABLE (NOT JUST LIVEABLE) CITIES: DESIGNING FOR PEOPLE TO THRIVE**

Presented by Siren Design

**THU 19 MAR, 12–2PM**

This masterclass explores how creativity can transform cities into places that are truly loveable, not just liveable.

**FREE** bookings required

**Venue** Stylecraft, 145 Flinders Ln, Melbourne

**HUMAN EXPERIENCES. HEALTHY ENVIRONMENTS**

Presented by ID-LAB

**THU 19 MAR, 2–5PM**

This half-day symposium focuses on designing approaches to improve the human experience in high-stress urban spaces.

**FREE** bookings required

**Venue** RMIT Activator, 102 Victoria St, Carlton

**TRANSFORMING EVERYDAY PUBLIC SPACES INTO THRIVING THIRD PLACES**

Presented by 106 Architects

**THU 19 MAR, 3.30–5PM**

This panel explores how to transform everyday public spaces into thriving third places.

**FREE** bookings required

**Venue** Spotted Mallard, 314–316 Sydney Rd, Brunswick

**TRUSTING INVISIBILITY**

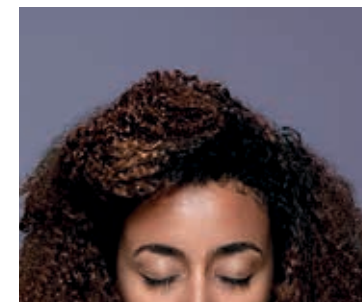
Presented by Designit

**THU 19 MAR, 5.30–7PM**

Trust is a binding agent to bring society together. This workshop looks to bring more tangibility to how designers craft trustworthiness.

**FREE** bookings required

**Venue** Kathleen Syme Library and Community Centre, Multi-Purpose Room 2, 251 Faraday St, Carlton



(top to bottom) Image courtesy of Siren Design; Photo: John T on Unsplash; Image courtesy of 106 Architects; Image courtesy of Designit

### IN CONVERSATION: LISA WAUP WITH HANNAH PRESLEY

Presented by NGV

**THU 19 MAR, 6.30–7.30PM**

Award-winning artist and designer Lisa Waup discusses design and collaboration with Hannah Presley, NGV Curator of Indigenous Art.

**FREE** bookings required

**Venue** NGV Members Lounge, Ground Level, NGV International, 180 St Kilda Rd, Melbourne

### AA ROUNDTABLE: RIGHTS AND RECLAMATIONS

Presented by Architecture Australia

**THU 19 MAR, 6–8PM**

Carroll Go-Sam, The University of Queensland, hosts a discussion that considers Indigenous experiences of land and its intersection with the built environment, exploring how architects can facilitate Blak design sovereignty.

**Cost** \$25 Double Pass / \$15 Single Pass, bookings required

**Venue** NGV Australia Theatre, Ground Level, The Ian Potter Centre: NGV Australia, Federation Square, cnr Flinders St and Russell St, Melbourne

### ELLEN BROAD: ARTIFICIAL INTELLIGENCE | MADE BY HUMANS TELSTRA CREATIVITY AND INNOVATION SERIES

Presented by Telstra and NGV

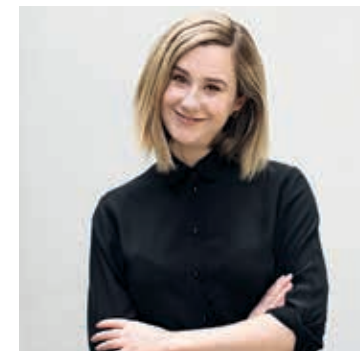
**THU 19 MAR, 6.30–7.30PM**

Artificial Intelligence (AI) influences our lives whether we notice it or not. Ellen Broad, Senior Fellow at the 3A Institute of the Australian National University, explores the choices designers face and the trade-offs they make in crafting AI systems that shape the lives of citizens.

**Cost** \$28 NGV Member / \$35 Adult / \$32 Concession, bookings required

**Venue** Great Hall, Ground Level, NGV International, 180 St Kilda Rd, Melbourne

This is an Auslan interpreted program



### THE SHAPE OF THINGS TO COME MELBOURNE DESIGN WEEK AT MERCEDES ME

Presented by Mercedes me Melbourne and NGV

**THU 19 MAR, 6.30–8PM**

Join Alice Blackwood, editor, journalist and communications strategist, as she brings together a panel of experimental designers working at the intersection of design, biology and science. As design shapes the world around us, this event will reveal the exciting potential of design and material ecology to turn problems into solutions.

**Cost** \$10 NGV Member / \$12 Adult, price includes a welcome drink and grazing table on arrival

**Venue** Mercedes me, 525 Collins St, Melbourne



### CITY DESIGN: ENVISIONING, EXHIBITING AND PARTICIPATING

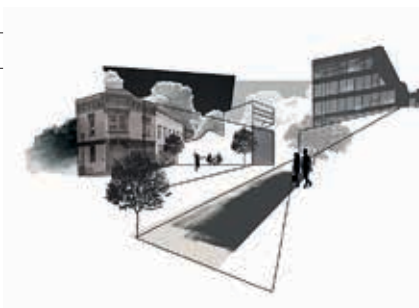
Presented by Moreland City Council

**THU 19 MAR, 6–8PM**

City Design is a panel discussion exploring transformative design processes, with an emphasis on how visualisation and exhibition can enhance design, decision-making and participation in shaping the future city.

**FREE**

**Venue** Counihan Gallery, 233 Sydney Rd, Brunswick



### DESIGNING THE FUTURE OF HOSPITALITY

Presented by James Richardson Furniture

**THU 19 MAR, 6.30–8.30PM**

This talk explores the impact design has on the future of hospitality.

**FREE** bookings required

**Venue** 18–24 Baillie St, North Melbourne



(above) The Blak Box, for Urban Theatre Projects, designed by architect Kevin O'Brien, BVN. Photo: Barton Taylor

(top to bottom) Ellen Broad. Photo: Amanda Thorson; Alice Blackwood. Image courtesy of Alice Blackwood; Image courtesy of Moreland City Council; Image: Photo: Sean Fennessy

**GET REAL BUY REAL SUPPLY REAL!**

Presented by Authentic Design Alliance  
and Flack Studio

**THU 19 MAR, 6.30–8.30PM**

**EXHIBITION: 12–21 MAR, MON–FRI, 10AM–5PM**

Launch and discussion by an award-winning panel of interior designers and architects explores how swapping out original products for fakes can damage the design economy.

**FREE** bookings required

**Venue** Flack Studios, 90 Moor St, Fitzroy

**THE RELATIVE RESTAURANT**

Presented by Relative Projects

**THU 19 & FRI 20 MAR, 6.30–10PM**

Open for two nights only, The Relative Restaurant is a pop-up restaurant in Relative Project's studio with social enterprise Free to Feed, connecting people, design and culture.

**Cost** \$65, bookings required

**Venue** Level 1, 84 Rupert St, Collingwood

**THE POLITICS OF PUBLIC SPACE:  
PUBLICATION LAUNCH**

Presented by Office

**THU 19 MAR, 6.30–9PM**

Office presents a launch for and discussion of quarterly publication *The Politics of Public Space*.

**FREE**

**Venue** Testing Grounds, 1 City Rd, Southbank

**PARALLEL VISIONS: PUBLIC TALK ON ART  
AND ITALIAN DESIGN**

Presented by Swinburne School of Design and CO.AS.IT.

**THU 19 MAR, 6.30PM**

**EXHIBITION: 12–21 MAR, TUE–FRI, 10AM–5PM & SAT, 12.30–5PM**

This talk reflects on the legacies of Italian design and is followed by an artist panel from the exhibition *Parallel Visions: Contemporary Interpretations of Italian Design through Art and Virtual Reality*.

**FREE** bookings required

**Venue** CO.AS.IT., 189–199 Faraday St, Carlton

**FACING THE WATER**

Presented by Troy Innocent, Anna Hickey-Moody, Fiona Hillary and Dan Green

**FRI 20 MAR, 9–11AM & 1–3PM**

Facing the Water is a co-designed exercise in reframing Melbourne's relationship with water – the workshop encourages a poetic, playful re-imagination of water and public space.

**FREE** bookings required

**Venue** Meet at MPavilion, Queen Victoria Gardens, St Kilda Rd, Melbourne

(opposite) Relative Projects. Image courtesy of Relative Projects  
(above) Image: Photo: Matt Caldar

PROGRAMS FRI 20 & SAT 21 MAR

MMEETS: PUBLIC POWER LAB  
WITH ESTHER ANATOLITIS

Presented by MPavilion  
**FRI 20 MAR, 12–5PM**  
This full-day workshop, led by Esther Anatolitis, draws on MPavilion as a cultural laboratory to explore how we make public space.  
**FREE**  
**Venue** MPavilion, Queen Victoria Gardens, St Kilda Rd, Melbourne



(top to bottom) Image courtesy of DIA; Image courtesy of Australian Institute of Architects (Vic)  
(opposite) Image: Light Corridor House by FIGR with BCAA Light by Christopher Boots. Photo: Tom Blachford and Kate Ballis

WATERING THE GARDENS

Presented by Open House Melbourne and Royal Botanic Gardens Victoria  
**FRI 20 MAR, 5–7PM**  
This event is a guided tour around the gardens and on the lake exploring water conservation in the city's Royal Botanic Gardens.  
**Cost** \$30, bookings required  
**Venue** Meet at Gate C, Royal Botanic Gardens Victoria, Melbourne Gardens, Anderson St, South Yarra

DESIGN INSTITUTE OF AUSTRALIA  
HALL OF FAME 2020

Presented by Design Institute of Australia  
**FRI 20 MAR, 6–8PM**  
This evening celebrates the *Design Institute of Australia Hall of Fame 2020*, an enduring record of the pioneers and ambassadors and their significant contribution to Australia's economic development and cultural identity.  
**Cost** \$35 Adult / FREE DIA Member, bookings required  
**Venue** Clemenger BBDO Auditorium, Ground Level, NGV International, 180 St Kilda Rd, Melbourne

2020 VICTORIAN ARCHITECTURE AWARDS:  
PRESENTATION TO JURIES

Presented by Victorian Chapter of the Australian Institute of Architects and RMIT University  
**FRI 20 MAR, 6–9PM & SAT 21 MAR, 8AM–7PM**  
The Australian Institute of Architects Presentation to Juries offers contenders in the 2020 Victorian Architecture Awards an opportunity to address judges with their nominated projects.  
**FREE**  
**Venue** FRI 20 MAR: Level 2, 41 Exhibition St, Melbourne. SAT 21 MAR: RMIT Design Hub, Building 100, Victoria St, Carlton

BOOK LAUNCH: DESIGN LIVES HERE

Presented by Penny Craswell  
**FRI 20 MAR, 6–8.30PM**  
*Design Lives Here: Interiors, Furniture and Lighting* features new homes, furniture and lighting by Australian architects and designers. Join Penny Craswell for the launch of her new book, published by Thames and Hudson, at Christopher Boots.  
**FREE** bookings required  
**Venue** Christopher Boots, 316–328 Napier St, Fitzroy



**THE RELATIVE RESTAURANT**

Presented by Relative Projects

**FRI 20 MAR, 6.30–10PM**

The Relative Restaurant is a pop-up restaurant in Relative Project's studio with social enterprise Free to Feed, connecting people, design and culture.

**Cost** \$65, bookings required

**Venue** Level 1, 84 Rupert St, Collingwood

**FACING THE WATER**

Presented by Troy Innocent, Anna Hickey-Moody, Fiona Hillary and Dan Green

**SAT 21 MAR, 9–11AM & 1–3PM**

Facing the Water is a co-designed exercise in reframing Melbourne's relationship with water – the workshop encourages a poetic, playful re-imagination of water and public space.

**FREE** bookings required

**Venue** Meet at MPavilion, Queen Victoria Gardens, St Kilda Rd, Melbourne

**BREATHE LIFE INTO A NEW GARMENT USING UPCYCLING TECHNIQUES**

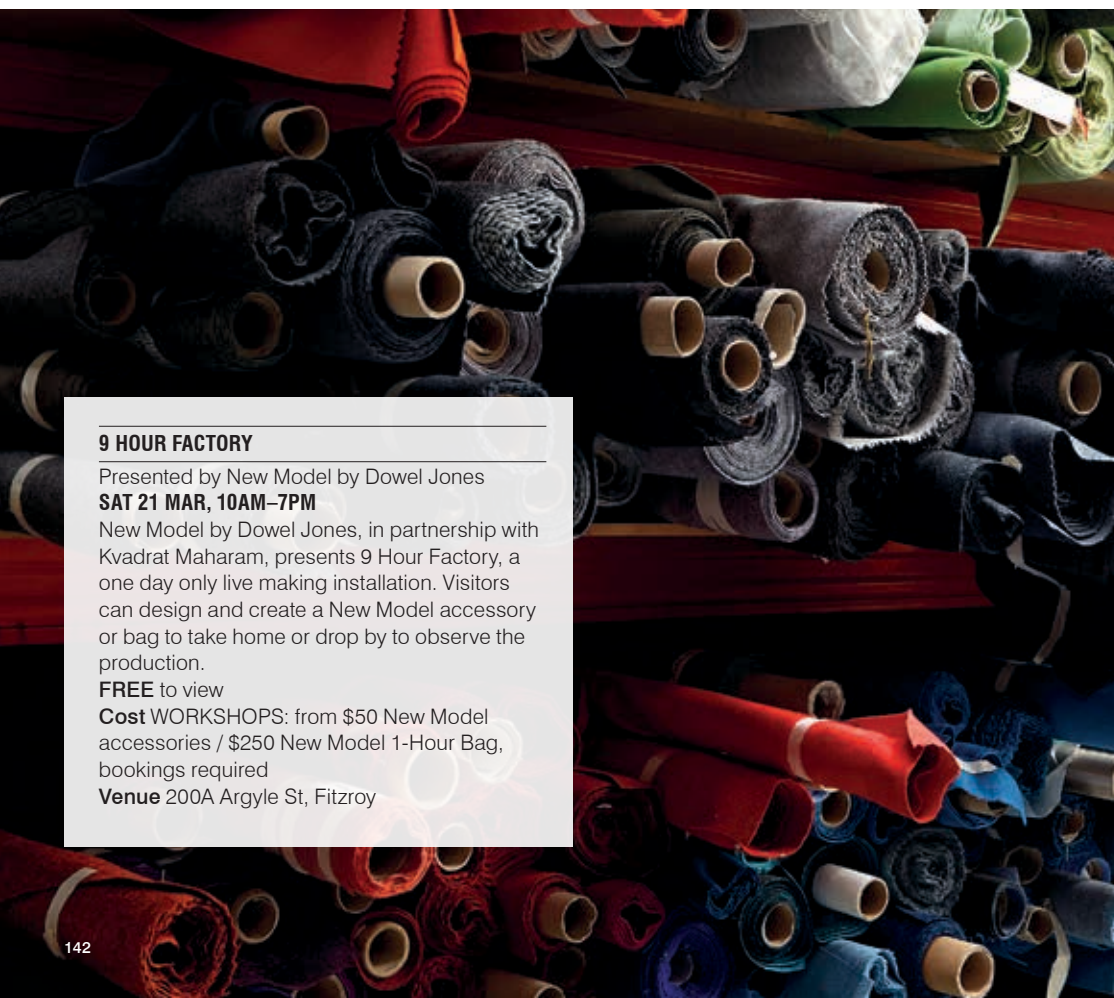
Presented by The Masters Institute of Creative Education

**SAT 21 MAR, 10AM–5PM**

Give a new garment new life in this workshop using sustainable upcycling techniques.

**Cost** \$95, bookings required

**Venue** Level 3, 185 Spring St, Melbourne

**9 HOUR FACTORY**

Presented by New Model by Dowel Jones

**SAT 21 MAR, 10AM–7PM**

New Model by Dowel Jones, in partnership with Kvadrat Maharam, presents 9 Hour Factory, a one day only live making installation. Visitors can design and create a New Model accessory or bag to take home or drop by to observe the production.

**FREE** to view

**Cost** WORKSHOPS: from \$50 New Model accessories / \$250 New Model 1-Hour Bag, bookings required

**Venue** 200A Argyle St, Fitzroy

**WELCOME TO COUNTRY & FLOOR TALK  
BLACK BAMBOO: CONTEMPORARY FURNITURE  
DESIGN FROM MER, TORRES STRAIT**

Presented by NGV

**SAT 21 MAR, 10.30AM–12PM**

Join us to welcome the artists and Community from Mer in celebration of the exhibition *Black Bamboo: Contemporary Furniture Design from Mer, Torres Strait*, at NGV Australia.

Parbin-ata Carolyn Briggs AM of the Boon Wurrung will present a Welcome to Country,

followed by a floor talk on the furniture collection produced during a three-week workshop on Mer. Guest speakers include Marep pamle artists and project's founder Aven S. Noah, Melbourne based furniture designer Damien Wright, as well as curators Simone LeAmon and Myles Russell-Cook from the NGV, Cairns Art Gallery and Gab Titui Cultural Centre.

**FREE**

**Venue** Level 2, The Ian Potter Centre: NGV Australia, Federation Square, Flinders and Russell St, Melbourne

(opposite) Photo: Charlie White. (top to bottom) Image courtesy of Claudia Altavilla; Four standing cabinets (from left to right) Arti, Gepi, Ebur Peris Peris and Koki 2019, Marep Pamle. Photo: Benjamin Ducroz



### MELBOURNE 2030 – TRANSFORMING FROM A CONSUMER TO A PRODUCER

Presented by Finding Infinity

**SAT 21 MAR, 2–3PM**

This talk investigates how it is possible to transform Greater Melbourne from a consumer to a producer by the year 2030.

**Cost** \$10, bookings required

**Venue** Clemenger BBDO Auditorium, Ground Level, NGV International, 180 St Kilda Rd, Melbourne



### DESIGNING FOR A LESS LONELY CITY

Presented by Health Transformation Lab

**SAT 21 MAR, 2–4PM**

This event explores designing less lonely cities, establishing participation cultures and opportunities for social collision through architecture and social impact start-ups in partnership with the health sector.

**FREE** bookings required

**Venue** Level 2, 155 Pelham St, Carlton

### GREENING SEAWALLS

Presented by Open House Melbourne, Reef Design Lab and Sydney Institute of Marine Science

**SAT 21 MAR, 10AM–12PM**

This boat tour features a discussion about creating coastal habitat infrastructure and artificial reefs.

**Cost** \$10, bookings required

**Venue** Meet at Federation Wharf, 15–19 Princes Walk, Melbourne

### MTALKS: TRANSLATING AMBIANCE

Presented by MPavilion

**SAT 21 MAR, 6–10PM**

This event brings together international scholars, artists, and designers to discuss concepts and definitions of ambience and atmosphere, and their creative application within urban, rural and wilderness environments; followed by a two-hour playback session of contemporary ambient soundscapes.

**FREE**

**Venue** MPavilion, Queen Victoria Gardens, St Kilda Rd, Melbourne

### HYBRID COASTAL DEFENCE

Presented by Open House Melbourne, National Centre for Coasts and Climate and Reef Design Lab

**SUN 22 MAR, 10AM–12PM**

Discover how design and sustainable methods can protect coastal communities from erosion on this tour.

**FREE** bookings required

**Venue** Altona, see [openhousemelbourne.org](http://openhousemelbourne.org) for details



### PLAY MAKING: MAKING PLAY

Presented by Forum

**SUN 22 MAR, 9AM–1PM**

Kids! Become an architect for a day and help rip, stick and fold your way through a wacky labyrinth of endless possibilities.

**FREE**

**Venue** Fitzroy North Primary School, Fergie St, Fitzroy North



(top to bottom) Photo: Alex Goad; Photo: Irena Galanos

### WATERING THE GARDENS

Presented by Open House Melbourne and Royal Botanic Gardens Victoria

**SAT 21 MAR, 4–6PM**

This event is a guided tour around the gardens and on the lake exploring water conservation in the city's Royal Botanic Gardens.

**Cost** \$30, bookings required

**Venue** Meet at Gate C, Royal Botanic Gardens Victoria, Melbourne Gardens, Anderson St, South Yarra

### I'M ON A (PORT OF MELBOURNE) BOAT!

Presented by Open House Melbourne and Port of Melbourne

**SUN 22 MAR, 10–10.45AM, 11–11.45AM, 12–12.45PM, 1–1.45PM, 2–2.45PM & 3–3.45PM**

Step aboard and see Australia's busiest port from a whole new angle.

**Cost** \$5.50, bookings required

**Venue** 55 Victoria Harbour Prom, Docklands

### DESIGNING A LEGACY

Presented by Tim Ross

**SUN 22 MAR, 2–3.15PM**

Comedian and design nerd Tim Ross draws out the stories of Australian families whose lives have been shaped within the walls of modern masterpieces, and discovers how architecture and memories bind us to a place.

**Cost** \$35 NGV Member / \$45 Adult / \$39 Concession, bookings required

**Venue** Clemenger BBDO Auditorium, Ground Level, NGV International, 180 St Kilda Rd, Melbourne

### FINDING THE RIVER: LIVING WITH WATER

Presented by Open House Melbourne and Jane's Walk

**SUN 22 MAR, 2–3.30PM**

This walk for World Water Day, from Montague (Fishermans Bend) to Birrarung (Yarra River), explores the theme of water in the landscape.

**FREE** bookings required

**Venue** Fishermans Bend, see [openhousemelbourne.org](http://openhousemelbourne.org) for details

### WALKSCAPES: TREEGAZING, FITZROY GARDENS

Presented by Heather Hesterman and Amanda Hawkey

**SUN 22 MAR, 10.30–11.45AM**

A walking event to appreciate trees and landscape design of Fitzroy Gardens.

**FREE** bookings required

**Venue** Meet at the steps of Old Treasury Museum Building, 20 Spring St, Melbourne



(above) Photo: Heather Hesterman; Image courtesy of Museums Victoria

## GEELONG DESIGN WEEK 2020

19–29 MAR

Geelong's unique creative heritage and exciting design-driven future will be showcased at Geelong Design Week 2020. More than 80 events will be held across 10 days, from 19–29 March, exploring new ideas and challenging what is possible. Hear from international design experts. See how virtual reality blends our past and future. Learn about designing for long-term survival. Geelong Design Week will celebrate Geelong's global recognition as a UNESCO City of Design.

See [geelongcityofdesign.com.au](http://geelongcityofdesign.com.au) for bookings

**geelong  
design  
week**

19–29 March 2020

**CREATIVE VICTORIA AND THE NGV WOULD LIKE TO THANK THE MANY ORGANISATIONS AND INDIVIDUALS WHO HAVE CONTRIBUTED CONTENT TO MELBOURNE DESIGN WEEK 2020.**

106 Architects	p. 135	Byzantine Design	p. 77
313RGB	p. 110	Caitlyn Parry	p. 79
Åbåke	p. 44	Chamberlain Architects	p. 92
alt. material	p. 78	City of Melbourne	p. 86
Alterfact Studio	p. 112	CO.AS.IT.	p. 91
Amanda Hawkey	p. 107	Code Black Coffee	p. 76
Amy Evans	p. 96	Collectivity Talks	p. 106
Anna Hickey-Moody	p. 139	Communications Collective	p. 106
Arc One	p. 44	Comuniti	p. 104
Architecture Australia	p. 136	Conor Todd	p. 96
Architecture Foundation Australia	p. 23	Cooperative Research Centre for Water Sensitive Cities	p. 86
Artbank	p. 98	Christopher Boots	p. 132
Arthur G	p. 77	Craft	p. 90
Arup	p. 72	Craig Walker: Design and Innovation	p. 105
Asialink Arts	p. 118	Creative Victoria	p. 121
Australian Centre for Contemporary Art	p. 131	Creative Women's Circle	p. 48
Australian Graphic Design Association	p. 125	Curvecrete	p. 97
Australian Institute of Architects	p. 108	Dan Green	p. 139
Australian Institute of Architects: Emerging Architects and Graduate Network	p. 69	Danish Institute for the Blind and Partially Sighted	p. 42
Australian Urban Design Research Centre	p. 69	Deakin University	p. 109
Authentic Design Alliance	p. 100	Design by Storm	p. 77
Brad Haylock	p. 44	Design Institute of Australia	p. 120
Brightspace	p. 84	Designit	p. 135
		Eugene Pereplechikov	p. 42
		Eugenie Kawabata	p. 94

Eva Florindo	p. 96	Jane's Walk	p. 59	National Centre for Coasts and Climate	p. 55	RMIT School of Design	p. 43
EWaste Watch Institute	p. 26	Kate Geck	p. 92	New Model by Dowel Jones	p. 142	RMIT University	p. 106
Finding Infinity	p. 144	Katherine Sundermann	p. 80	NOMIT	p. 76	Robin Boyd Foundation	p. 32
Fiona Hillary	p. 139	LCI Melbourne	p. 118	Oculus	p. 105	Royal Botanic Gardens Victoria	p. 58
Fiona Lynch	p. 101	Leanne Hodyl	p. 120	Office	p. 139	Russh	p. 106
Flack Studio	p. 100	Lido & Classic Cinemas	p. 146	Office of the Victorian Government Architect	p. 133	SIX	p. 94
Foreground	p. 34	Local Peoples	p. 109	Okay Kiosk	p. 110	Saint Francis Place	p. 75
Forum	p. 146	Loddon Campaspe Multicultural Services	p. 83	Ollie Cotsaftis and Co.	p. 75	Scanlan & Makers	p. 85
Four Seasons Commercial Interiors	p. 76	London College of Communication	p. 86	One Two One Two	p. 95	School of Architecture and Built Environment, The University of Newcastle	p. 100
Friends and Associates	p. 42	Mark Jacques	p. 80	Open House Melbourne	p. 54	Sean Guy	p. 79
Futuna Lecture Series	p. 23	MARS Gallery	p. 78	Our Community House	p. 80	Sean Hogan	p. 80
Gallery Funaki	p. 78	Matters Journal	p. 109	Parlour	p. 132	Siren Design	p. 135
Gallery Sally Dan-Cuthbert	p. 44	Melbourne Architours	p. 55	Penny Craswell	p. 141	Sofie Dederen	p. 44
Garland magazine	p. 113	Melbourne Food and Wine Festival	p. 96	Perfume Playground	p. 95	Sonya Veronica Iskandar	p. 133
Geelong Tech School	p. 95	Melbourne Museum	p. 99	Radim Peško	p. 44	Sophie Gannon Gallery	p. 40
Georgia Nowak	p. 42	Melbourne School of Design	p. 17	Pieces of Eight Gem School	p. 111	Steelotto	p. 83
Grimshaw	p. 79	Melbourne Water	p. 56	Port of Melbourne	p. 59	Strelka Institute for Media, Architecture and Design	p. 46
Health Transformation Lab	p. 124	Mercedes-Benz	p. 50	Portable	p. 80	Studio Rain	p. 73
Heather Hesterman	p. 107	Michelle Tabet	p. 120	Prototypes and Popcorn	p. 125	Stylecraft	p. 36
Heide Museum of Modern Art	p. 116	Millie Cattlin	p. 80	Punctum Inc.	p. 83	Superscale	p. 90
Heritage Council of Victoria	p. 133	Modern Times	p. 99	Reef Design Lab	p. 55	Sussex Taps	p. 120
ID-LAB	p. 135	Molonglo	p. 125	Relative Projects	p. 138	Swinburne School of Design	p. 91
Inhabit	p. 129	Monash Architecture	p. 199	Richard Sowada	p. 62	Sydney Institute of Marine Science	p. 59
IP Australia	p. 123	Monash Design	p. 43	RMIT Design Archives	p. 127	Technē Architecture and Interior Design	p. 77
Istituto Italiano di Cultura	p. 112	Moreland City Council	p. 137	RMIT Design Hub Gallery	p. 38	Telstra	p. 24
James Howe	p. 87	MPavilion	p. 113	RMIT Industrial Design	p. 99	Terra Home Objects	p. 86
James Richardson Furniture	p. 137	Mycelium Studios	p. 87	RMIT School of Architecture and Urban Design	p. 76		
James Walsh	p. 36	Natalie Miles	p. 98				

The City of Greater Geelong	p. 126
The Gordon (TAFE): Graphic Design	p. 79
The Masters Institute of Creative Education	p. 143
The University of Newcastle	p. 120
Tim Ross	p. 108
Tolarno Galleries	p. 72
Tove Papp Lindkvist	p. 42
Town Hall Gallery	p. 90
Troy Innocent	p. 139
TSAR Carpets	p. 77
Urban Design	p. 76
Urban Theatre Projects	p. 105
UWA	p. 69
Vermin	p. 98
Very Little Architecture	p. 84
Vico Magistretti Foundation	p. 112
Victorian Chapter of the Australian Institute of Architects	p. 140
Victorian Curriculum and Assessment Authority	p. 99
Virgin Australia Melbourne Fashion Festival	p. 106
Watersure	p. 54
Wayne Smith	p. 110
Yan design studio	p. 77
Yarra Riverkeeper Association	p. 56
Zwei Interiors Architecture	p. 76



Printed by Southern Colour, a chain of custody–certified company for the Programme for the Endorsement of Forest Certification (PEFC). All processes are controlled via our Environmental Management System that is certified to ISO 14001. This product has been manufactured using vegetable-based inks and all waste material used during the printing process has been recycled in accordance with ISO 14001.

Subscribe to NGV Design eNews for all Melbourne Design Week updates.  
**DESIGNWEEK.MELBOURNE**

#MELBOURNEDESIGNWEEK  
@NGVMELBOURNE

# BOOK ONLINE AT DESIGNWEEK.MELBOURNE

PRESENTED BY

NATIONAL GALLERY  
OF VICTORIA NGV

CREATIVE VICTORIA

MAJOR PARTNERS



YERING  
Station

DANN  
EVENT HIRE

DESIGN PARTNER

EVENT PARTNERS

SUPPORTER

MEDIA PARTNERS

de  
zeen

The New York Times

habitus

BROADSHEET

ARCHITECTUREAU

MELBOURNE DESIGN WEEK AND THE VICTORIAN DESIGN PROGRAM ARE INITIATIVES OF THE VICTORIAN GOVERNMENT.  
THE NGV DEPARTMENT OF CONTEMPORARY DESIGN AND ARCHITECTURE IS GENEROUSLY SUPPORTED BY THE HUGH D. T. WILLIAMSON FOUNDATION.

Installation view of *In Absence*, 2019 designed by Yhonnie Scarce and Edition Office for the 2019 Architecture Commission at NGV International. Photo: Ben Hosking